

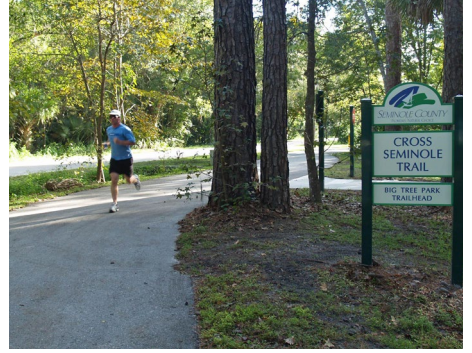
# 2021 COMMUNITY IMPACT REPORT



**SEMINOLE COUNTY LEISURE SERVICES DEPARTMENT**  
EXTENSION SERVICES | GREENWAYS AND NATURAL LANDS | LIBRARIES | PARKS AND RECREATION











# TABLE OF CONTENTS

6	LETTER FROM THE DIRECTOR
8	LEISURE SERVICES DEPARTMENT MISSION
9	CAPRA DESIGNATION
10	DEPARTMENT PROFILE
11	CONDENSED FINANCIAL REPORT FY 2019/2020
12	LEISURE SERVICES "FIRSTS"
14 – 19	EXTENSION SERVICES
20 – 27	GREENWAYS AND NATURAL LANDS
28 – 35	LIBRARY SERVICES
36 – 45	PARKS AND RECREATION
48	AWARD WINNING
50	THANK YOU TO OUR SPONSORS

# MESSAGE FROM THE DIRECTOR



**Dear Community Member,**

Welcome to the Seminole County Leisure Services Department's Annual Community Impact Report.

While 2020 was a year unlike any other and challenged us to re-think how we continue to provide excellent customer service while keeping both our citizens and staff safe, 2021 was the year for us to build on what we learned and modify the way that we provide our services.

We had many accomplishments to celebrate this year:

- Our Parks and Recreation Division entered into a preferred usage agreement with Perfect Game, Inc., one of the premier tournament baseball organizations.
- Once again our Extension Services Division was awarded several state and national awards including the National Association County Agriculture Agents team award; a \$1,000 award from UF's Office of Strategic Communications and Marketing: Research Promotion Initiative; and, the 2021 Communications Award for Best Publication from the Florida Association of County Agriculture Agents.
- The Greenways and Natural Lands Division completed the Trails Master Plan, installed three new boardwalk sections along the St. Johns River at Black Bear Wilderness Area, and completed a Phase I (design) for Rolling Hills Community Park.
- Library Services had almost 6 million virtual visits, use of the Library's eBooks and other virtual collections increased by 48% over the previous year, and received \$270,000 in CARES Act funding for self-checkout kiosks and remote book pick-up lockers.

As we head into 2022 with new and exciting projects, I would like to thank our staff once again for continuing to adapt to our "new" normal and our County Manager's Office and County Commissioners for their continued leadership and support. Thank you, also, to our citizens who support our libraries, extension office, parks, and wilderness areas through visitation and participation in programs.

**Respectfully,**

A handwritten signature in blue ink, appearing to read 'R. Durr'.

Richard E. Durr, Jr., CPRP, PLA, AICP  
**Director of Leisure Services**





# LEISURE SERVICES MISSION

**Enriching lives through outstanding cultural, educational, environmental and recreational experiences.**

## **OUR GOALS & OBJECTIVES**

### **Community Building & Social Equity:**

Ensure that the community has access to the benefits of local parks, libraries, extension, and natural lands experiences and opportunities.

### **Economic Impact:**

Create opportunities and experiences that provide for economic growth and sustainability in the community.

### **Environmental Sustainability:**

Create recreational, conservation, preservation, and educational opportunities within the community that maintain healthy, vibrant, and balanced natural surroundings.

### **Health & Wellness:**

Provide facilities and learning environments for the community to create and maintain healthy lifestyles through wellness opportunities.

### **Financial Sustainability:**

Provide sound financial management in the Department to ensure fiscal sustainability and effective decision making by providing staff with the necessary resources and tools for success.



# CAPRA DESIGNATION



Commission for Accreditation of Park and Recreation Agencies (CAPRA) accredits park and recreation agencies for excellence in operation and service.

*Evaluation is on 151 Standards of Excellence.*

---

## SEMINOLE COUNTY'S AGENCY ACCREDITATION IS ONE OF:

**192** Agencies Nationally

**25** in Florida

**19** with multiple reaccreditations

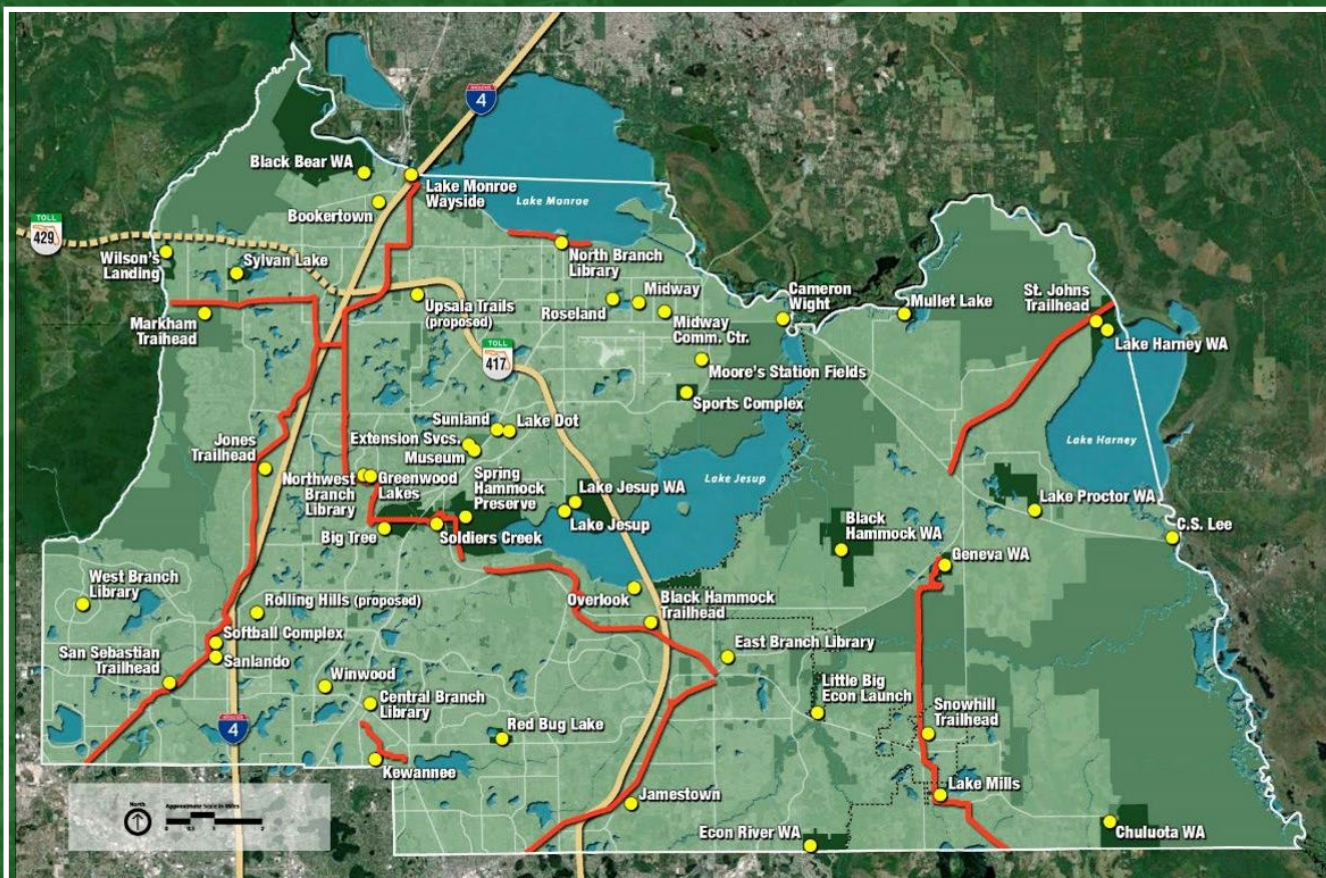
The Seminole County Leisure Services Department was **accredited** in **2009**, **re-accredited** in **2014** and **re-accredited** in **2019**.

# DEPARTMENT PROFILE

## Leisure Services Operations

- 7,352 Acres of Parks & Natural Lands
- 6 Staffed Parks
- 24 Unstaffed Parks & Trailheads
- 11 Natural Lands Areas Open for Use
- 5 Library Branches
- 51 Miles of Paved Trails
- 85 Miles of Unpaved and Wilderness Trails
- 60 Misc. County Facilities — Public Grounds
- 50 Miles of County Roadway Medians

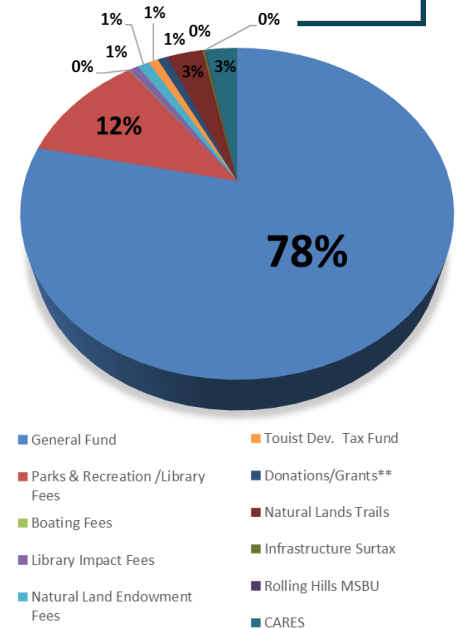
## Facility Map



# CONDENSED FINANCIAL REPORT FY 2021/2022

## REVENUES

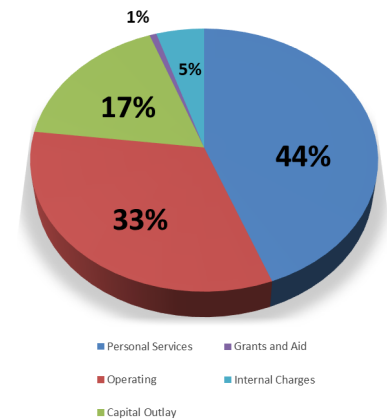
General Fund	\$16,033,753
Parks & Recreation /Library Fees	\$2,349,339
Boating Fees	\$11,976
Library Impact Fees	\$163,229
Natural Land Endowment Fees	\$221,483
Tourist Dev. Tax Fund	\$175,923
Donations/Grants*	\$180,581
Natural Lands Trails	\$660,507
Infrastructure Surtax	\$43,767
Rolling Hills MSBU	\$17,964
CARES	\$579,912
<b>Total</b>	<b>\$20,438,434</b>



\*Includes State Aid to Libraries

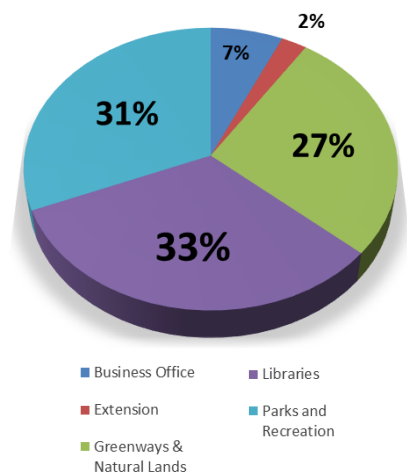
## EXPENDITURES

Personal Services	9,030,753
Operating	6,697,216
Capital Outlay	3,570,514
Grants and Aid	142,400
Internal Charges	997,552
<b>Total</b>	<b>\$20,438,434</b>



## USES (BY DIVISION)

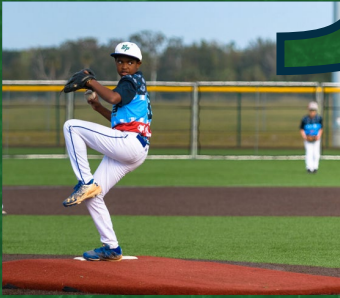
Business Office	1,400,742
Extension	496,124
Greenways & Natural Lands	5,529,783
Libraries	6,639,376
Parks and Recreation	6,372,409
<b>Total</b>	<b>\$20,438,434</b>





# 1'S

**Traveling Senator Exhibit** trailer was completed. First Event was held at the Oviedo Farmers Market on March 20, 2021.



# 1'S

**Parks and Recreation** hosted **158 different tournaments** which totaled **385 days** of tournament play.



# 1'S

Seminole County launched the **first Self-Service Lockers** at all branches. The lockers offer no-contact access to pick up books on reserve.



# 1'S

The Seminole County Natural Lands Program provided the **first virtual animal encounters program** for Library Services summer virtual camps.



# 1'S

UF IFAS Extension Seminole County offered the **first Seminole County Extension Virtual Farm Tour** with help from SGTV. This included a series of 6 videos and had an engagement of 2,300 views.



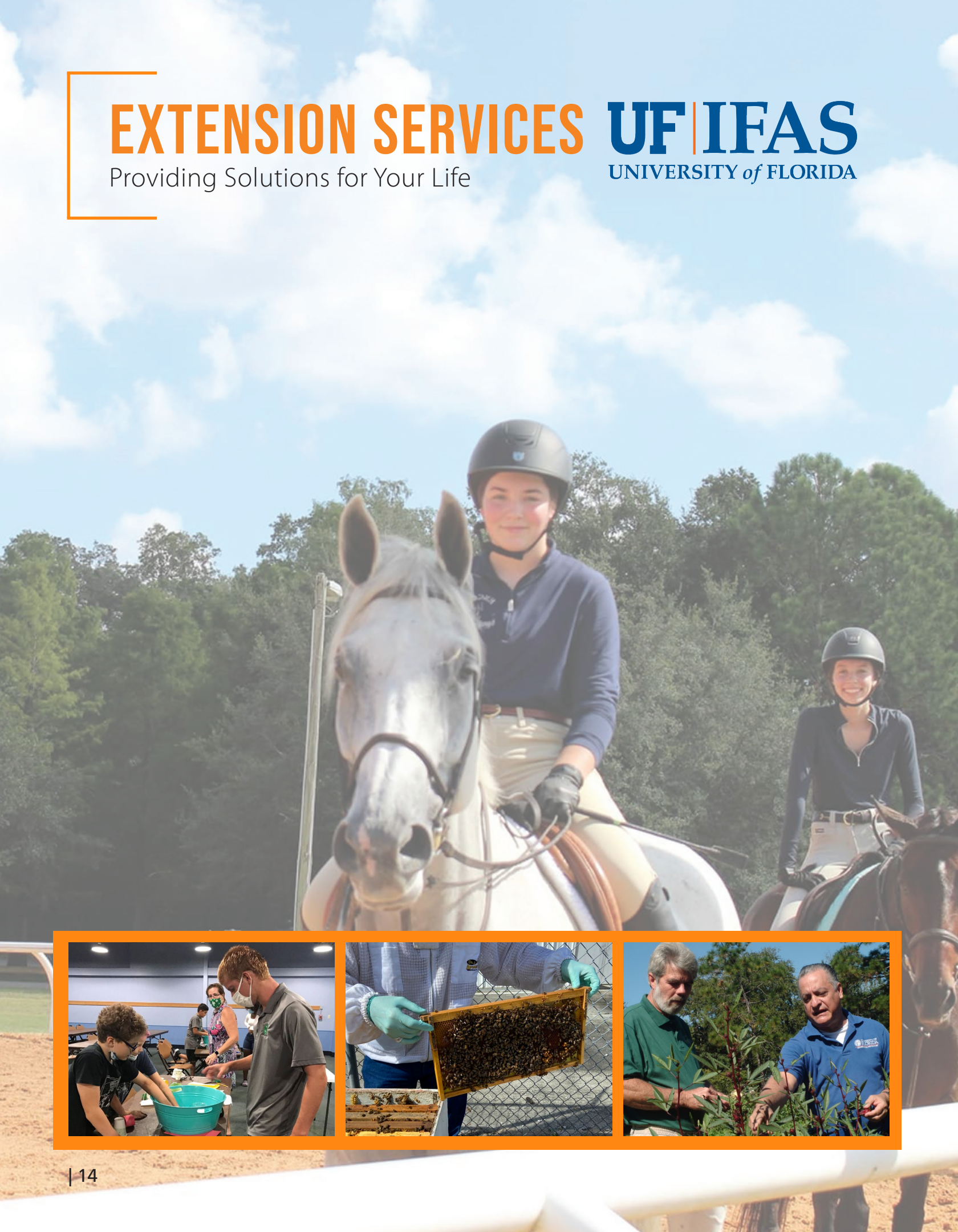
# LEISURE SERVICES “FIRSTS”

The previous page highlights a few of the firsts for our department in the past year, despite the continuing impact of the COVID-19 pandemic. Our commitment to the citizens of this County has continued by adapting the way that we operate and providing creative solutions. We provided many different types of virtual outreach and trainings for all ages. We developed non-contact ways to continue delivering services to our customers, we worked closely with our partners to safely hold tournaments and we continued to work on and complete projects at our parks, libraries, and Natural Lands properties.

# EXTENSION SERVICES

Providing Solutions for Your Life

**UF | IFAS**  
UNIVERSITY of FLORIDA





# DIVISION HIGHLIGHTS

**95 PESTICIDE** certifications exams were administrated UF/IFAS Extension Seminole County. The Central District Pesticide Trainers also collaborated to offer over **1,568 CONTINUING EDUCATION UNITS (CEUS)** to pesticide applicators to maintain their licenses.

Based on a 2020, University of Florida Study, certified pesticide applicators have the potential to earn more money by being certified on average. Certified individuals annual wage is **\$6,448** higher than unlicensed landscape workers.

**2,860** youth ages 5 through 18 have been served through 4-H Youth Development, Animal Science, Marine Science, Entrepreneurship, Public Speaking and Healthy Living.

**247** Adult and Youth **VOLUNTEERS** donated approximately **2,933** hours of their time, which is equivalent to **ALMOST 1 AND A HALF FULL TIME EMPLOYEES** or a savings of approximately **\$83,708\*** annually to County Residents.

*\*2021 FL data from the Independent Sector*

**269 EDUCATIONAL CLASSES** were provided on economic, environmental or social issues with **9,480 PARTICIPANTS.**

# EXTENSION SERVICES

Providing Solutions for Your Life

**UF | IFAS**  
UNIVERSITY of FLORIDA





# AGRICULTURE IN SEMINOLE COUNTY

**403** farms

**34,926 ACRES** of Land in Farms

**87 ACRES** Average Size of Farm

**\$21,345,000** Market Value of Products Sold

*2017 Census of Agriculture*

For every **\$1** spent on locally grown produce, there is a **\$2.40** economic multiplier to the local economy. It is estimated that for every **\$1** invested in agricultural research and extension, there is a return of **\$20** to the community.

*Based on a 2019 University of Florida study*

## EXTENSION SERVICES ADVISORY BOARD MEMBERS

Rita Law

Nitza Sanchez

Jennifer Mitchell

Linda White

Tom Minter

GiGi Rivadeneyra

Clay Archey

Rick Durr

Mark Catelli

Sarafaith Pekor

### Other Advisory Boards Include:

Board of County Commissioners  
Agriculture Advisory Board

Florida Friendly Landscaping  
Advisory Board

4-H Association

Family & Consumer Sciences  
Advisory Board

Urban Horticulture & Master  
Gardener Advisory Board

# OUR PARTNERS IN EXCELLENCE

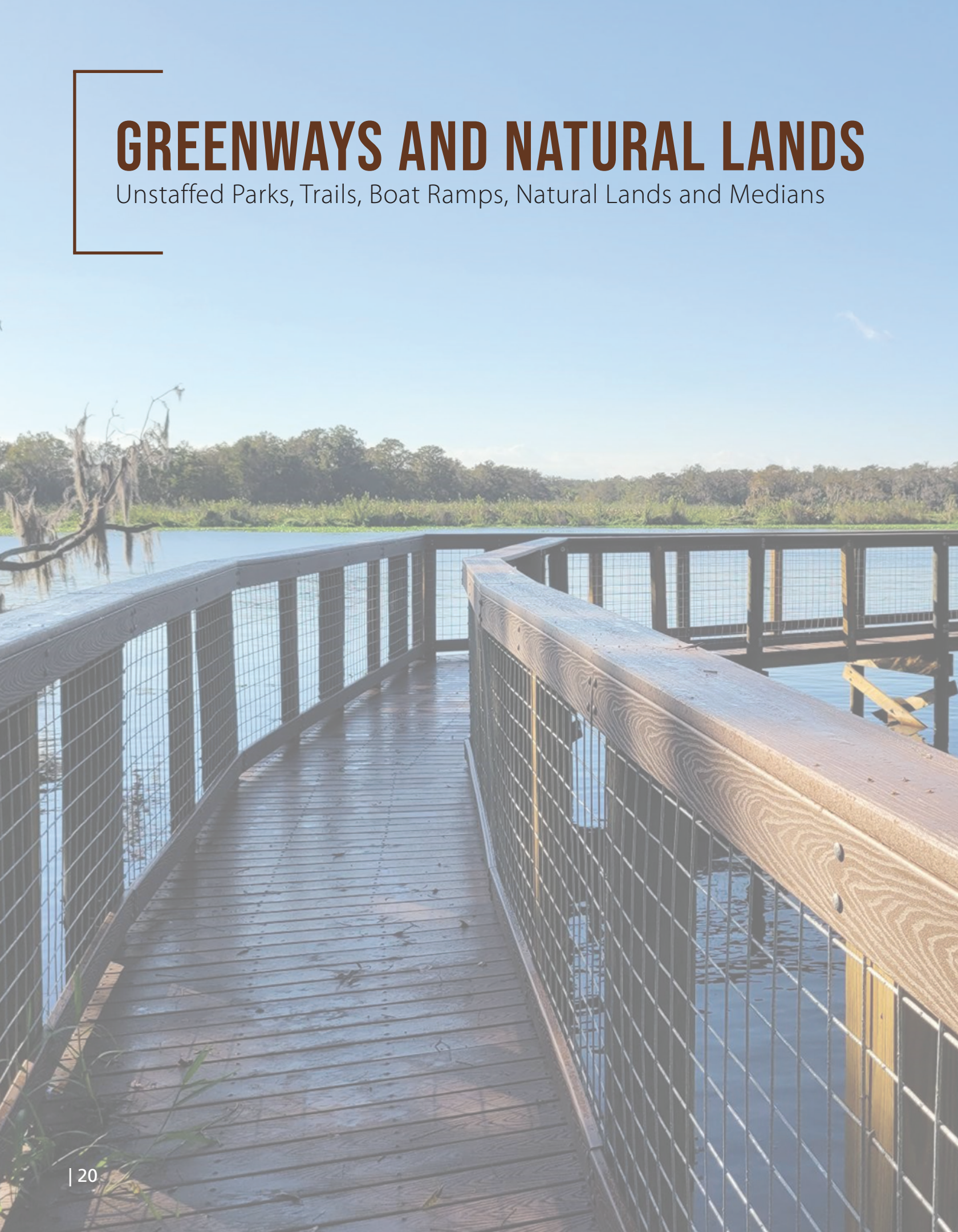


# EXTENSION SERVICES

3 Fromme Design; Above and Beyond Children and Community Services Inc; All Souls Catholic School; Altamonte Christian School; Ampersand School; Bavarian Motor Sports; Bay Head Eye Care; Bear Lake Elementary School; Black Hammock; Bee Farm; Bok Towers; Bud Martin; Casselberry EarthFest; Central Cooperative Invasive Species Management Area; Central Florida Earth Day; Central Florida Zoo and Botanical Garden; Christian Sharing Center; Chuluota Feed; Chuluota Veterinary Hospital; Citizens Bank; City of Altamonte Springs; City of Casselberry; City of Casselberry Youth Summer Camp; City of Lake Mary; City of Longwood; City of Maitland; City of Oviedo; City of Sanford; City of Winter Springs; Clarcona Horse Park; CocaCola;Community Associations Institute,Central Florida Chapter; Design Environmental Kreation, LLC; Doctor of Plant Medicine Program; Double R Private School; Duda Farm Fresh Foods, Inc.; Dutch Mill Nursery; Dyna Gro; Earthwork Seeds; East Central Florida Regional Planning Council; Farm Credit of Central Florida; Fifth Third Bank; Florida 4-H/Florida Dept. of Agriculture and Consumer Services; Florida 4-H/United Healthcare Foundation; Florida Department of Corrections Circuit 18; Florida Department of Health; Florida Native Plant Society,Cuplet Fern Chapter; Florida Food Policy Council; Franklin Legacy Financial; Friends of the Wekiva River; Galileo School for Gifted Learning; Geneva Beef Company; Geneva Village Homemakers; Goldsboro Front Porch Group; Goldsboro Elementary School; Goodwill Job Connection Center; Greenwood Lakes Middle School; Greenwood Pharmacy; Hagerty High School; Happy Bee; Head Start Program (Sanford, Altamonte Springs); Helpful Hands, Inc.; Holy Cross Luthern Academy; Hope Helps Resource Center; Horsepower Ranch; Horseservices, Inc.; Indian Trails Middle School; Jackson Heights; Middle School; Jesus Christ Church of Latter Day Saints; Jett Printworks; John E. Polk Correctional Facility; Johnny's Seeds; Lake Howell High School; Lake Mary Life Magazine; UF/IFAS Lakewatch; Lawton Chiles Middle School; Lommerse Honey; Longwood Elementary School; Lukas Nursery; Markham Woods Middle School; Meriweather Farms; Millennium Middle School; Morris Family Farms; Mr. & Mrs. Richard Ashby; National 4-H Council/Disney Worldwide Conservation Fund; National Community Reinvestment Coalition; Northland Church-Day care program-Life Hope Program; Old Red Barn of Geneva; Old State Stables; Orangewood Christian School; Orlando North; Orlando Sentinel; Oviedo Crosslife Church ESOL Program; Pappy's Patch U-Pick; Park Maitland Middle School; Pet Bow-Tique; Publix Supermarkets,Inc.; Bok Tower Gardens; Randy Cutlip Farrier Services; Redeeming Life Outreach Ministry; Reja Mental Health; Rest Haven Farm; Rock Lake Middle School; Sanford Ace Hardware; Sanford Community Garden; Sanford Flower Shop; Seed 2 Source; Seminole County Beekeepers Association; Seminole County Cattleman's Association; Seminole County Community Services Department; Seminole County Department of Public Safety; Seminole County Farm Bureau; Seminole County Government Television; Seminole County Greenways and Natural Lands; Seminole County HCE Council; Seminole County Health Department; Seminole County Libraries; Seminole County Parks Division; Leisure Services; Seminole County Public Schools Administration; Seminole County School Board Dividends and Retired Senior Volunteer Program; Seminole County Public Schools Employee Wellness Program; Seminole County Stormwater Division; Seminole State College; Seminole State College English as a Second Language (ESOL) Program (Altamonte Springs, Lake Mary/Sanford), Oviedo); Seminole County Sheriff's Office Child Protective Services; Silver Sands Bridle Club Inc.; Soggy Acres Pomelo Grove; Solid Rock Realty; South Seminole Farm and Nursery; South Seminole Middle School; Spring Hills Assisted Living; Spring Lake Elementary School; St. John's River Water Management District; State of Harmony Farm; Stockman's Harness and Saddle Shop; Sundew Gardens; Sunniland; Sunrise Acres Oviedo; Sweetwater Oaks Garden Fair; T.G. Lee Foundation; Track Shack; Teague Middle School; The Garden Club of Sanford; The Masters Academy; The Mortaga Firm, LLC; The Sharing Center Tropicana, Inc.; Tuskawilla Middle School; Tyton Construction, Inc.; Union Park Neighborhood Community Center ESOL Program; United States Department of Agriculture; Walker Elementary School; Wayne Densch Performing Arts Center; Wekiva Island; Westside Boys and Girls Club, Sanford; White's Red Hill Grove; Wild Horse Rescue Center; Williams Agency; Wilson Elementary School; Winter Springs Elementary School; Yarrowhough Ranch

# GREENWAYS AND NATURAL LANDS

Unstaffed Parks, Trails, Boat Ramps, Natural Lands and Medians





# DIVISION HIGHLIGHTS

**3,437 STUDENTS AND CITIZENS** attended education and outreach programs (these numbers were still low due to the ongoing COVID-19 pandemic).

**900 VOLUNTEER HOURS** which is equivalent to a part-time employee position or a savings of approximately **\$25,686\*** annually to County residents.

*\*2021 FL data from the Independent Sector*

Completed Phase I Plan of Rolling Hills Community Park.

Completed the Trails Master Plan Update for Seminole County trails.

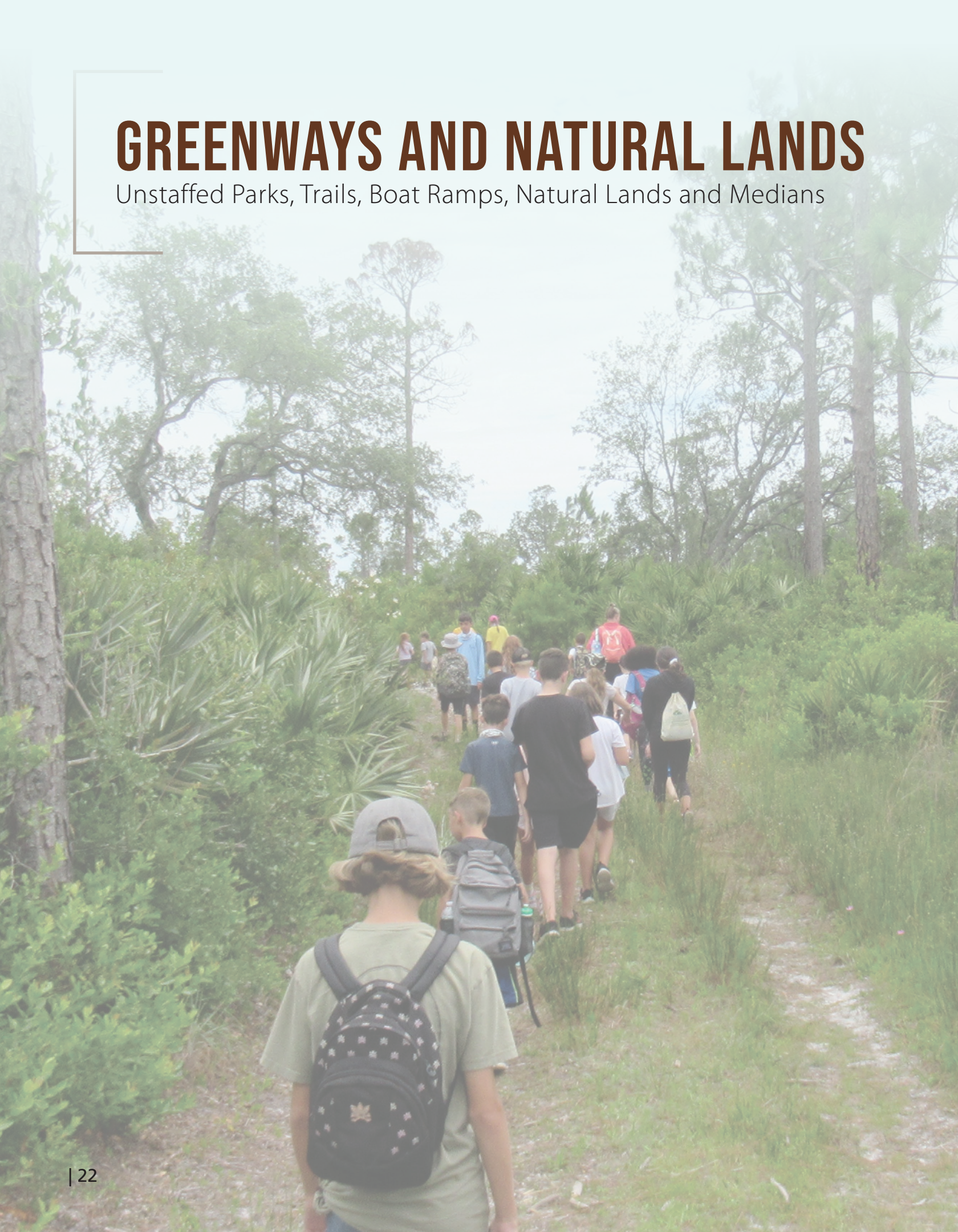
Natural Lands Prescribed Burn Program completed **10 PRESCRIBED BURNS** on **160 ACRES** of Natural Lands properties.

Natural Lands Habitat Restoration Activities Completed habitat restoration activities on **703 ACRES** of Natural Lands properties.

**ED YARBOROUGH NATURE CENTER**  
Increased the number of Family Fun Camp Outs from **4 TO 6 PER YEAR.**

# GREENWAYS AND NATURAL LANDS

Unstaffed Parks, Trails, Boat Ramps, Natural Lands and Medians





# PROJECT HIGHLIGHTS

## **NORTHWEST BRANCH PARKING LOT IMPROVEMENTS -**

Performed parking lot modifications for the Northwest Branch Public Library located at 580 Greenway Blvd. in Seminole County, FL. The project included demolition of existing asphalt, relocated main entrance, improved drainage, all new paving, improved landscaping and new lighting. The modifications increased parking spaces and also helped with the flow of traffic along Greenway Blvd.

**BLACK BEAR WILDERNESS AREA** - Installed three new sections of boardwalk bypassing areas of trail erosion and providing beautiful views of the St. Johns River.

**CHULUOTA WILDERNESS AREA** - Installed a new Storage Building.

**GENEVA WILDERNESS AREA & LAKE HARNEY WILDERNESS AREA** – A Gold and Eagle Scout completed bee houses and a new outdoor turtle enclosure respectively.

**ECON AND LAKE PROCTOR WILDERNESS AREAS** – Installed new Storage Buildings and acquired new UTVs.

**GENEVA WILDERNESS AREA** – An Eagle Scout completed a new footbridge providing improved access to the south camp site.

# GREENWAYS AND NATURAL LANDS

Unstaffed Parks, Trails, Boat Ramps, Natural Lands and Medians





# TESTIMONIALS

**“You guys were absolutely amazing and kept my girl happy every single day, while giving her memories that will last a lifetime. I am so grateful she was able to have this experience and hope to have her signed up for next year. Thanks so much!”**

*- Anonymous Survey Respondent*

**“Thank you so much for the Botany presentation today. Excellent presentation and interesting hike. We all enjoyed it and learned a lot.”**

*- Anonymous Survey Respondent*

**“I loved the presenter’s ability to answer any questions we had and you could tell he was super knowledgeable. Kept the attention of the adults as well as children. Very enjoyable and informative.”**

*- Anonymous Survey Respondent*



# ADOPT A PARK PARTNERS IN EXCELLENCE



# GREENWAYS AND NATURAL LANDS

## **SCOUT TROOP 242**

LAKE EMMA ANIMAL HOSPITAL

## **SEMINOLE COUNTY HOMESCHOOLERS**

BSA TROOP 631

## **ADVENTURE CYCLING**

SAVE RURAL SEMINOLE

## **SEMINOLE AUDUBON SOCIETY**

ADVENTURE CYCLING

## **SUNSHINE STATE SEEKERS**

HEALING HANDS BY TERESA, RN, LMT

## **HBC OUTDOORS**

SORBA ORLANDO

## **EDR TECHNOLOGIES, INC.**

# LIBRARY SERVICES

## MISSION

Enriching Lives, Engaging Minds, Empowering Community

## OUR VISION

We envision a Seminole County where creativity and inspiration thrive, and where every person has the opportunity and resources to read, learn and grow.

## OUR VALUES

We are guided by:

Respect for our customers and for each other

Belief in the transformational power of reading and learning

Access for all and the freedom to read

Belief that anything is possible with creativity, and optimism



SEMINOLE COUNTY  
PUBLIC LIBRARY SYSTEM

I GOT  
MY FIRST  
LIBRARY  
CARD!

# DIVISION HIGHLIGHTS

**5,954,402** Virtual Library Visits

**2,563,144** Customer Transactions

**778,927** Annual In-person Visits

**345,868** Registered borrowers - County Residents with a library card used in the last 3 years

**4,670** Online library card registrations

**41,587** Self-Checkout using the new Self-Checkout Kiosks

**327,748** eMaterial (eBooks, eAudiobooks, eMagazines and Video) increased by **48%** over last year

**500** Youth Programs (live)

**13,822** Youth library programs Attendance

**2,310** Curb Side Pick-up

**5,525** Remote Pickup Lockers – Items checkout by the remote lockers

**5,607 VOLUNTEER HOURS** which is equivalent to **4 FULL TIME EMPLOYEE POSITIONS** or a savings of approximately **\$160,023.78\*** annually to County Residents

*\*2021 FL data from the Independent Sector*

# LIBRARY SERVICES





# FULFILLING OUR MISSION

## Enriching Lives, Engaging Minds and Empowering Community

The Library conducted over 2.5 million customer transactions in the past year. There were nearly 6 million virtual visits to the Library's web pages, online catalog, and electronic resources. The use of the Library's eBooks and other virtual collections increased by 48% over the previous year.

We responded to the needs of County Residents during the pandemic with popular remote services, such as Remote Book Pick-Up Lockers at all branches, that make it easy and convenient to pickup books on reserve. The Library's new Self-Checkout Kiosks allow customers to checkout their own materials or to self - pay fines by credit card or cash. The Library received over \$270,000 in Cares Act funding for these projects.

The Library continued to offer popular early literacy programs by Zoom, and in-person outdoors to promote reading, early literacy skills, and provide a safe library experience. There were engaging Story Walks, story programs, educational scavenger hunts, and puppetry offered throughout the year.

The Northwest Branch underwent a \$466,228.00 expansion of the public parking lot that doubled the number of parking spaces for the public and increased access to the Library Branch for County residents. At the same time, the Northwest Branch public restrooms received a \$108,000 renovation to meet current standards of the Americans with Disabilities Act.

## LIBRARY ADVISORY BOARD MEMBERS

Anne West (Chair)

Susan Kellicut

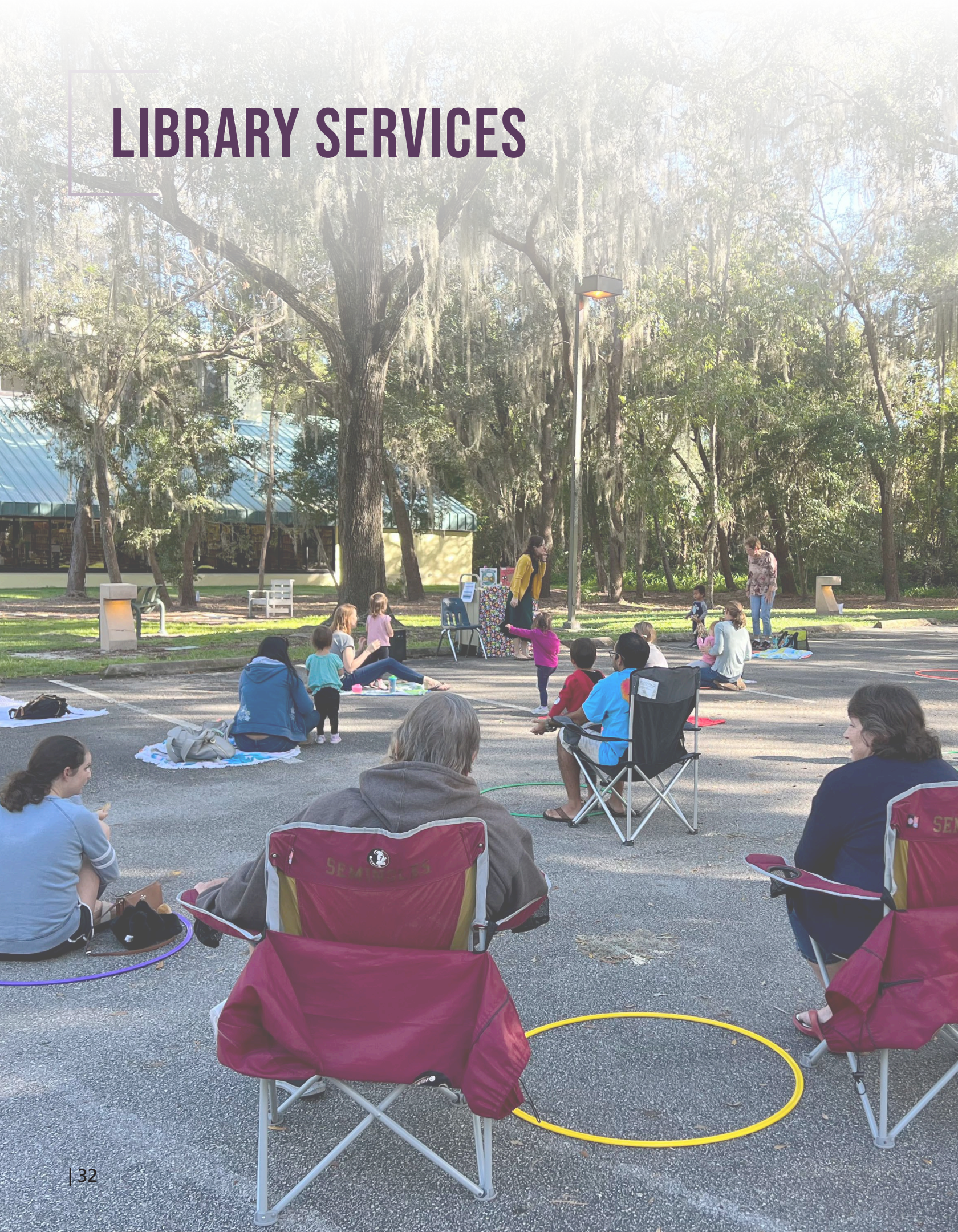
C. S. Loosier

Raychel Garcia

Jeanine Ellenson

Rosemary Closson

# LIBRARY SERVICES





# TESTIMONIALS

**“My kids love the storytimes outdoors. With COVID it’s nice to enjoy storytime outside and I hope an outdoor option will continue to be available once COVID has mostly passed. I’ve been taking my kids to storytimes at the library since they were babies and we’ve always had a good time.”**

**“We absolutely love the outside storytime because it offers us a safe option for our baby who can’t be vaccinated yet. We love storytime!”**

**“We LOVE outdoor storytime. It has been a lifesaver for our family during the pandemic. We would start joining indoor events only after vaccines are available to 6 months & up. Thank you for all you do!”**

*- East Branch Parents*

**“Thank you so much! You will be hearing from me in a little less than a year to renew. I don’t want to stress myself out by pushing it to the wire again and fearing a lapse in my borrowing privileges. Your email is a giant relief to me, so thank you for responding so quickly. I think I would rather have my electricity cut off than let my library card lapse!”**

*- Marge, a Northwest Branch customer who has recently moved to Belize and purchased an “out-of-county” library card so that she could continue to utilize SCPL*

**“I just wanted to tell you how much I enjoyed my last meeting with the Writer’s Block. Sometimes I feel so silly for being so absolutely excited about this group there is a different group I belonged to, but I have to say I really feel so much more comfortable in the informal, yet a professional group that we have in Seminole. I have a piece that I am still working on from today and oh boy do I have stories and upon stories about ancestors so it is certainly a treat to find out that I can come next week thank you see you Monday.”**

*- From a legally blind customer who is participating in our online Writer’s Block program*



# OUR PARTNERS IN EXCELLENCE





# LIBRARY SERVICES

## **Adult Literacy League**

Seminole County Public Schools

## **Small Business Development Center at Seminole State College**

Foundation for Seminole County Public Schools

## **National Arts Council**

Orlando Sentinel One Book One Community

## **The Emil Buehler Perpetual Trust Planetarium at Seminole State College**

Reading Paws

## **Seminole County Bar Association Legal Aid Society**

League of Women Voters – Seminole County

## **Senior Resource Alliance**

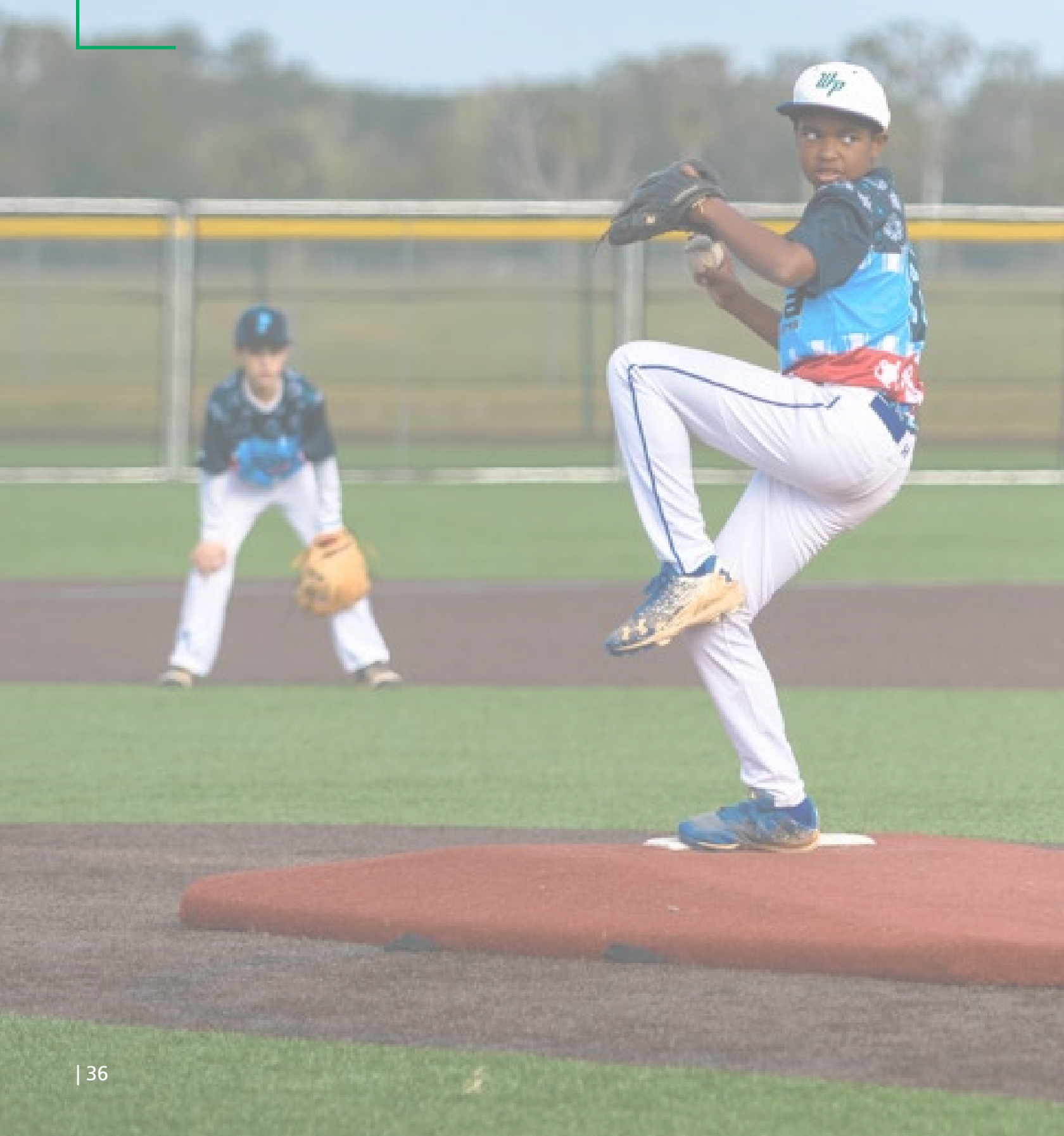
Tertulia Cuatro Gatos

## **University of Central Florida - National Endowment for the Arts, The Big Read**

WUCF & PBS Kids

# PARKS AND RECREATION

Staffed Parks



# DIVISION HIGHLIGHTS

Over **20,916** participants registered in one of the county's **2,160** tennis programs, tournaments or camps and over **7,200** players participated in the county's softball leagues. This adds up to more than **12,600** hours of recreational program and league offerings.

Seminole County entered into an agreement with **Perfect Game, Inc.**, one of the premier tournament baseball organizations. This preferred usage agreement will unprecedented economic impact to Seminole County.

BOOMBAH Sports Complex hosted **57** events over **165** tournament days, generating **27,200** hotel nights and **\$31.2** million of economic impact.

BOOMBAH Soldiers Creek Park hosted **32** events over **75** days, generating **4,500** hotel nights and nearly **\$4.8 MILLION** of economic impact.

Sylvan Lake Park, Sanlando Park, Seminole County Softball Complex and Red Bug Lake Park together hosted **69** economic impact events, generating **13,000** hotel nights and nearly **\$9.5 MILLION** of economic impact

Red Bug and Seminole Softball Complex hosted a charity softball tournament in December. Teams donated thousands of dollars of toys which were donated to local families for the holiday.

During the midst of a global pandemic the tennis program saw record levels of participation!

# PARKS AND RECREATION

Staffed Parks





# TOP ECONOMIC IMPACTS

## TOURNAMENTS AND EVENTS

- Elite Championship National League Tournaments (Boys and Girls)
- Perfect Game Summer Season - 63 out of 65 straight days of tournaments!
- Multiple USTA Junior Tournaments Level 6 or higher
- Perfect Game Inc. - World Series & Super National Championship Events
- ISSA Senior Softball Winter Worlds Tournament
- Florida Half Century Softball Tournaments
- Proswings Power 50 Invitational
- Orlando City Columbus Day Cup
- Men's ASA modified pitch Tournament
- Gem of the Hills Softball Tournament
- USSSA Fastpitch State Championships
- BOOMBAH NIT Baseball Tournament
- Seminole State College Invitational
- FCSAA State Softball Tournament

Through a partnership with our Probation Office, citizens doing probation served **518.5** hours of community service at our parks.

Estimated Economic benefit to Seminole County:  
**\$45,500,000**

# PARKS AND RECREATION

Staffed Parks





# ACCOMPLISHMENTS

## IMPROVEMENTS

- Installed over 44 new shade coverings around the Boombah Sports Complex
- Finished construction on the Traveling Senator Exhibit
- Red Bug Lake shoreline restoration project completed
- 15 tennis courts were resurfaced
- Replaced walking path at Seminole County Softball Complex
- Improved batting cages with new benches and new hitting surface at Boombah Soldiers Creek Park
- Updated meeting room at Soldiers Creek Park by replacing worn out carpet with vinyl wood plank
- Expanded sidewalks with new pavers at Sanlando Park
- Added landscape to front entrance and additional flower boxes added around the building at Softball Complex
- Improved playing surfaces at BOOMBAH Soldiers Creek Park, BOOMBAH Sports Complex, Red Bug Lake Park, Seminole County Softball Complex and Sylvan Lake Park
- The 1795 Riding Chair restoration was completed. This is the first buggy from the Bill Nygren Carriage Collection to be restored.



# PARKS AND RECREATION

Staffed Parks





# TESTIMONIALS

“Everything about the Sports Complex was great!” The facility, the staff, the experience. We look forward to running our event here again next year!”

– Greg Thomas, ISSA Softball

“The Sports Complex is an ideal facility to host our Airshow Pilot Briefings. The staff’s professionalism and hospitality is top notch!”

– Steve Webster, Sanford Airport  
Orlando Air & Space Air Show.

“I wanted to thank you so much for all the tournaments that we held at your facility (Sanlando Park) during this year. It is my favorite place to hold tournaments, everything is so nice and the people that work under you are doing a fantastic job.”

– Alvaro Bedoya, Premier Tennis Network

“Thank you for a FLAWLESS weekend. Your team rocks!!! It’s always a pleasure playing at your facility. We look forward to our continued partnership.”

– Tonya Waters, USSSA Fastpitch

“The league officials and administrators are a great group of people that are doing this work because they love the game, and they want to make their community a better place.”

– Anonymous Softball Team

“I wanted to inform you of the positive experience my daughter had during the camp. She requested to attend again next year. Thanks, and we look forward to participating next summer.”

– Angela Perry (Tennis Camp Parent)

“Thank you and your staff for all the hard work you do”

– Mitch Whittington, Southern Lax Events

“Your maintenance staff is great and easy to work with”

– Danny Kirby, Seminole Youth Soccer

# PARTNERS IN EXCELLENCE





# PARKS AND RECREATION

## **ClinCloud, LLC**

Humana Insurance

## **KidsTown USA (Winter Springs location)**

Lake Mary Prep National Jr. Honor Society

## **Publix Grocery Store, Winter Springs**

St. Stephen's Catholic Church, Winter Springs

## **Starbucks Coffee, Longwood**

United States Tennis Association

# PARTNERS IN EXCELLENCE





# PARKS AND RECREATION

## Historical Commission

- Donna Bundy
- Imogene Yarborough
- Kathryn Townsend
- Marjorie Smith
- Paul Zuromski
- Desta Horner
- Eunice Mann
- Robert Hughes
- Jeannine Ellenson
- Rosalie Cook
- Carmen Bierman
- Ben Wheeler
- Joanne Schwarzmann
- Beverly Mason
- Lynn Dictor

## Parks and Preservation Advisory Committee

- Mark Brandenburg
- Emily Hanna
- Tom Boyko
- Ed Ghiglieri
- Bryce Gibson
- J. Reid Hilliard
- Pasha Baker
- Joseph Humphreys
- Nancy Dunn
- William Wills
- Robert Bowden
- Jason Sutton
- Ashlee Woodard
- Daniel Roy
- Andrea Fleming

## PARC'S Foundation

- Matt Criswell,  
President
- Charley Sloan,  
Vice President
- John Horan, Treasurer
- Madison Wilkinson
- Susie Dolan, Treasurer
- Rob Dominica
- Emily Hanna
- Richard E. Durr Jr.,  
CPRP, PLA, AICP

# AWARDS





### Central District Symposium 2021

**Best Abstract in Natural Resources: Successfully taking the central Florida CISMA grasses workshop virtual**

*Tina McIntyre and Morgan Pinkerton*

### Central District Symposium 2021

**Best Abstract in Horticulture/FFL: Horticulture pushes forward: in-person programming during COVID-19**

*Morgan Pinkerton (and team, Liz Felter, Hannah Wooten, Brooke Moffis, Grantly Ricketts)*

### Central District Symposium 2021

**Best Poster in Natural Resources: Successfully taking the central Florida CISMA grasses workshop virtual**

*Tina McIntyre and Morgan Pinkerton*

### Central District Symposium 2021

**Best Poster in Horticulture/FFL: From In-Person to Virtual: Taking Florida-Friendly Online**

*Tina McIntyre*

### Florida Association of Natural Resource Extension Professionals (FANREP)

**2<sup>nd</sup> place in televised conference/webinar: Central Florida Cooperative Invasive Species Management Area 2020 Virtual Grass/Sedge Workshop**

*Tina McIntyre and Morgan Pinkerton*

### UF's Office of Strategic Communications & Marketing: Research Promotion Initiative

**\$1,000 Research Promotion Initiative award for the research: Expanding the Curricula for Florida's Youth: Outreach Efforts in Agricultural Literacy**

*Morgan Pinkerton, (and team A. Hodges, and C. Frey)*

### Association of Natural Resource Extension Professionals (ANREP)

**Silver Award, Promotional and Marketing Materials: Nutrient Management in a Wild and Scenic River Basin**

*Tina McIntyre*

### Florida Association of County Agriculture Agents (FACAA)

**2021 Communications Award, Best Publication: Edible Landscaping Using the Nine Florida-Friendly Landscaping™ Principles**

*Tina McIntyre (and team Silvasy, T., Barber, L., Momol, E., Wichman, T., Freeman, T., Wilber, W.)*

### Florida Association of Natural Resource Extension Professionals (FANREP)

**1<sup>st</sup> place Promotional or Marketing: Nutrient Management in A Wild & Scenic River Basin**

*Tina McIntyre*

### Florida Association of Natural Resource Extension Professionals (FANREP)

**2<sup>nd</sup> place Short Publication: Ring of Responsibility**

*Tina McIntyre*

### Florida Association of Natural Resource Extension Professionals (FANREP)

**2<sup>nd</sup> Book or Comprehensive Program Curriculum: Virtual Entomology Summer Camp**

*Tina McIntyre, Kaydie McCormick, Chelsea Woodard, Morgan Pinkerton*

### Florida Association of Natural Resource Extension Professionals (FANREP)

**1<sup>st</sup> Podcast/Radio: Florida-Friendly Landscaping Principles on Better Lawns and Gardens**

*Tina McIntyre*

### Florida Association of Extension 4-H Agents

**Communicator Award, Media Presentation: District VIII 4-H Volunteer Training: TEAMS, 4-H Online 2.0 and 4-H Projects**

*Karen Henry (and team- Melinda Souers, Jessica Sprain, Ben Knowles)*

### Florida Association of Extension 4-H Agents

**Communicator Award, Promotional Piece: 4-H Camp for a Day flyer**

*Karen Henry (and team - Dallas Meringolo, Jessica Sprain, Melinda Souers)*

### Florida Association of Extension 4-H Agents

**State Award, Search for Literature Award: County Events Preparation**

*Karen Henry, Shane Michael, Chelsea Woodard*

### Florida Association of County Agricultural Agents

**Professional Excellence Poster in Extension Education: Experiential Learning to Support Horticulture Industry During COVID-19**

*Morgan Pinkerton (and team Liz Felter, Hannah Wooten, Grantly Ricketts, Brooke Moffis)*

### National Association County Agricultural Agents

**Search for Excellence in Consumer or Commercial Horticulture Extension: Integrated Pest Management (IPM) Scouting Workshops Improve Skills of Greenhouse/Nursery**

*Morgan Pinkerton (and team Liz Felter, Hannah Wooten, Grantly Ricketts, Brooke Moffis, Matt Smith)*







# THANK YOU TO OUR PARTNERS AND SPONSORS

Thank you to our partners and sponsors. Your generosity and support further's our mission of making Seminole County one of the best places to live in Florida.



## **SEMINOLE COUNTY LEISURE SERVICES DEPARTMENT**

EXTENSION SERVICES | GREENWAYS AND NATURAL LANDS | LIBRARIES | PARKS AND RECREATION

### **Administrative Office:**

100 E. 1st Street, Sanford, FL 32771 | 407-665-2001

### **Visit us on the web at:**

[www.seminolecountyfl.gov/leisure](http://www.seminolecountyfl.gov/leisure)

# **2021 COMMUNITY IMPACT REPORT**

