



Seminole County Fire Department 2023 ANNUAL REPORT

-  [seminolecountyfd](https://www.instagram.com/seminolecountyfd)
-  [SCFD.1974](https://www.facebook.com/SCFD.1974)
-  [scfdpio](https://twitter.com/scfdpio)
-  [seminolecountyfl.gov/FireDepartment](https://www.seminolecountyfl.gov/FireDepartment)



FIRE CHIEF'S MESSAGE

This past year has been a remarkable year for the Seminole County Fire Department (SCFD) in terms of growth, training, and innovation. We are pleased to highlight some of our significant achievements and milestones over the past year.

We proudly marked the groundbreaking of Station 39 in the Paola/Sanford area and celebrated the opening of the new facility for Station 11 in the City of Altamonte Springs. Additionally, we acquired two high-water/flood and multi-use rescue vehicles to enhance our emergency response capabilities, thanks to federal ARPA funding. The integration of the HAAS digital warning system into all our fire apparatus has significantly improved roadside safety by alerting drivers of emergency responses.

Our commitment to excellence was reaffirmed as we achieved the "Gold Standard" from the Commission on Accreditation of Ambulance Services (CAAS) for the fourth consecutive time. We also partnered with the Gunner Martin Foundation to provide free door alarms to residents, helping to prevent pediatric drownings. Furthermore, we

celebrated the promotion of a record 66 personnel, including four Assistant Chiefs, four Battalion Chiefs, 19 Lieutenants, 37 Engineers, and two Dispatch promotions.

On behalf of the 574 members of the SCFD, we are honored to serve our Seminole County community, providing the essential resources needed for the preservation of life and property.

Sincerely,



Fire Chief Matt Kinley
Seminole County Fire Department



I love the variety of specialties and advancement opportunities at SCFD. The feeling of camaraderie in our department is like no other. I've made great friends in this department and they are like my second family.

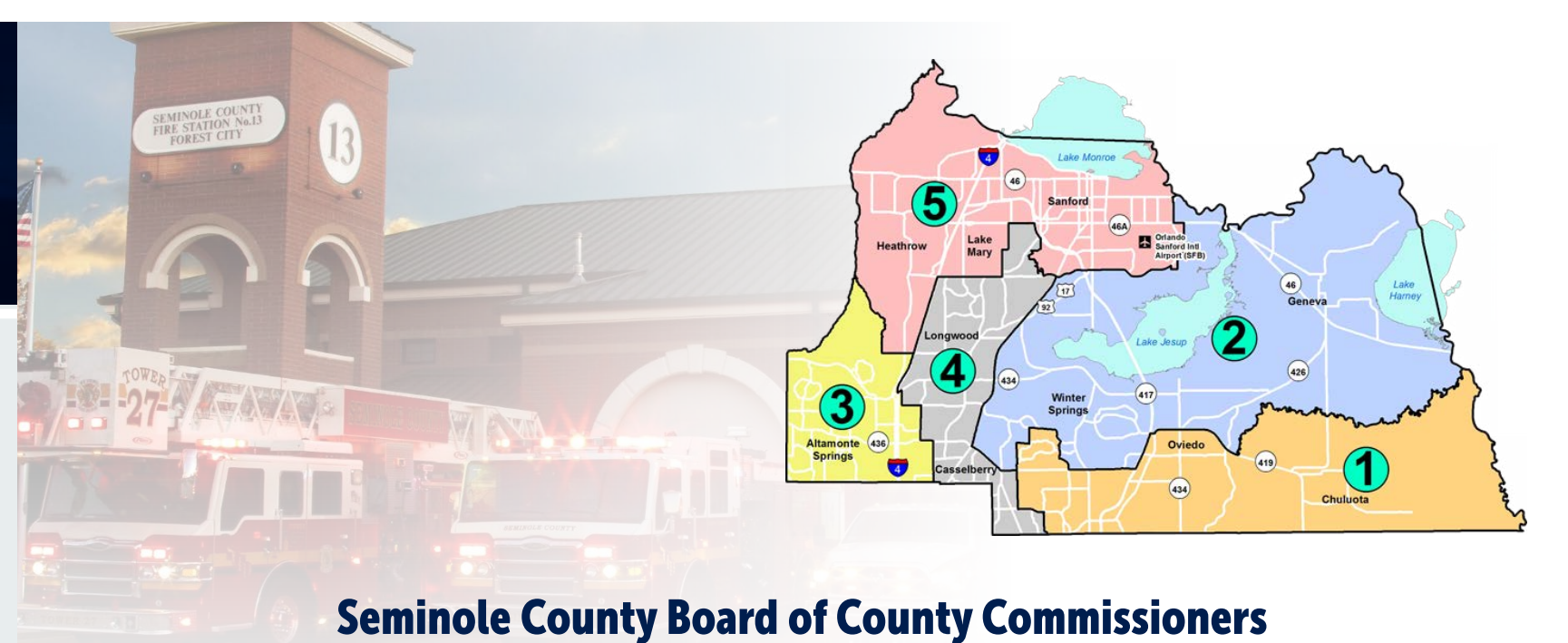
-Lt. Toni Loudermilk, hired in 2006 and promoted to Lieutenant in 2023



Firefighter Jesse Crews was promoted to the rank of Engineer in 2023 and serves on the Special Hazards & Operations Team (SHOT).



TABLE OF CONTENTS



05	About Us	21	Professional Standards & Training & Recruitment
07	At a Glance	25	Special Operations
09	Operations	27	Fire Prevention
13	Medical Director & EMS Operations	29	Public Information & Community Outreach
15	Educating & Empowering Residents	31	Emergency Communications
17	New Stations	33	Fleet
19	Fiscal & Technology	36	Fire Stations

Seminole County Board of County Commissioners



Bob Dallari
District 1



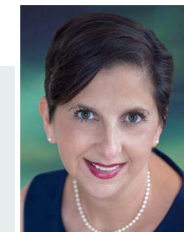
Jay Zembower
District 2



Lee Constantine
District 3



Amy Lockhart
District 4



Andria Herr
District 5



PURPOSE

Ready to respond. Trained to make a difference.

MISSION

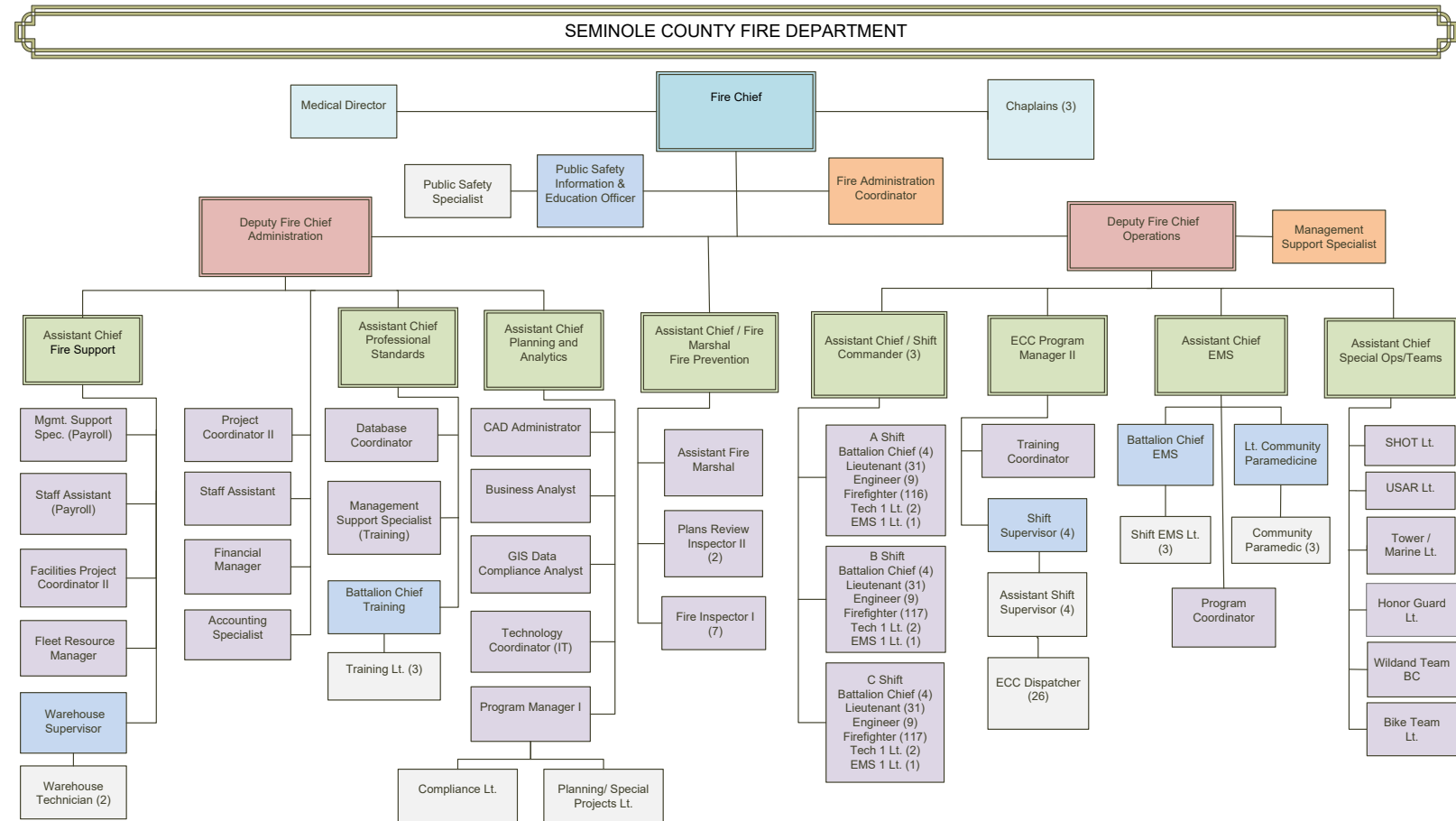
The mission of the Seminole County Fire Department is **the preservation of life and property** through the rapid response of highly trained personnel with appropriate resources and continuous prevention, so everyone goes home safe.

ORGANIZATIONAL VALUES

- Selflessness through Duty**
- Consistency of Service**
- Fairness and Equity**
- Dedication to Community**



SCFD Fact: SCFD was founded on October 1, 1974.



AT A GLANCE

COUNTY STATISTICS



471K
POPULATION



345
SQUARE
MILES



140
MILES OF
TRAILS



60+
MILES OF
WATERWAYS

2023 FIRE STATISTICS



97%
OF PROPERTIES
SAVED FROM FIRE



\$344 M
VALUE SAVED



50,515
INCIDENTS



5,386
TOTAL YEARS OF
SERVICE



40
NEW
FIREFIGHTERS
HIRED

GENERAL FIRE STATISTICS



20
FIRE
STATIONS



ISO
CLASS 1



574
PERSONNEL



57
VETERANS

**FIRST RESPONSE
AGREEMENTS ARE
IN PLACE WITH**

LAKE MARY LONGWOOD
OVIEDO SANFORD
ORLANDO SANFORD
INT'L AIRPORT



SCFD FACT: Seminole County is the 4th most densely populated county in Florida.



OPERATIONS



BEN DECUIR
Deputy Chief of Operations



JOHN THIBERT
Deputy Chief of Administration



JOLENE JOYCE
Assistant Chief
A Shift



BRYON CHANEY
Assistant Chief
B Shift



JASON PRATHER
Assistant Chief
C Shift

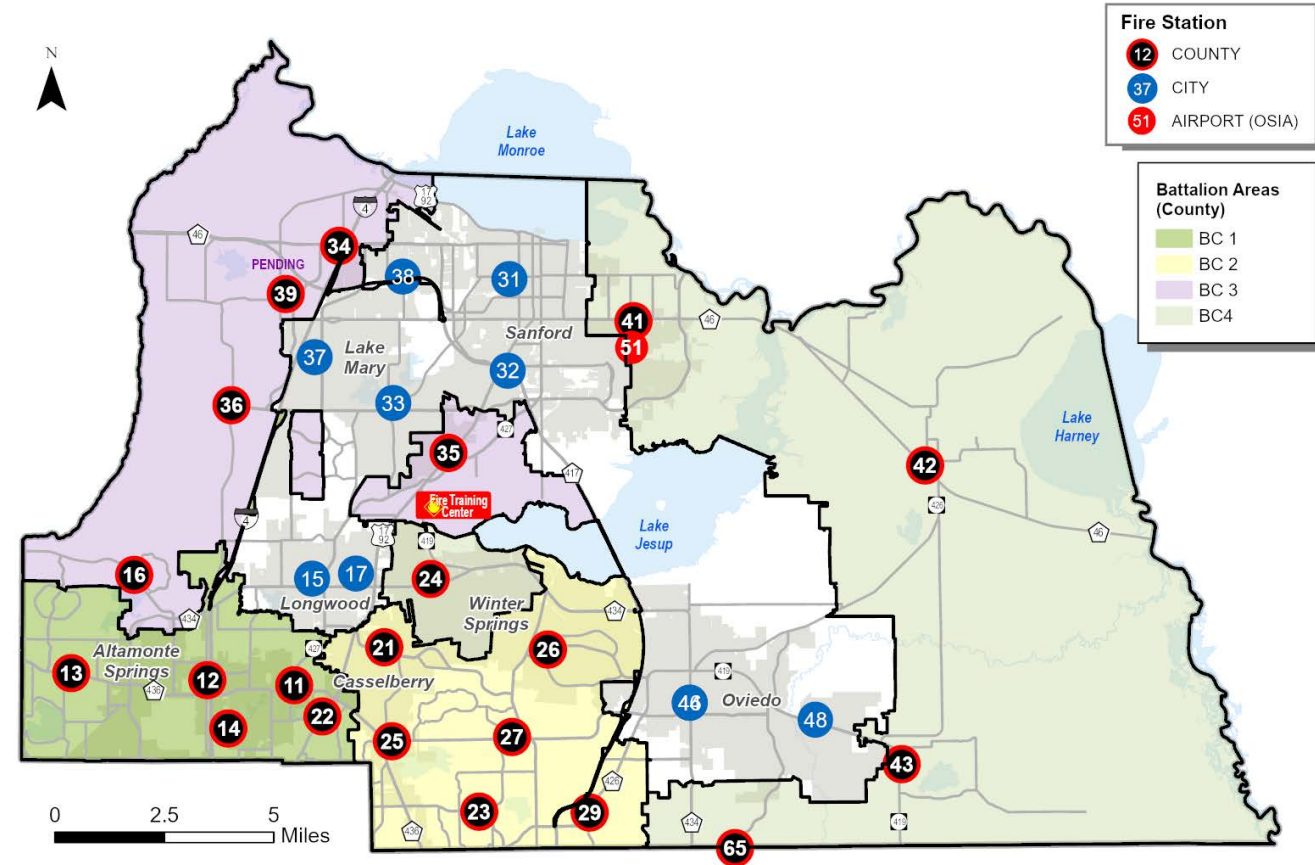


SCFD operates **three shifts** (A, B, & C) led by an Assistant Chief who serves as the Shift Commander. They are responsible for **four Battalions**, each with a Battalion Chief who oversees the stations and personnel within its area. See page 36 for Battalion listings and Station information.

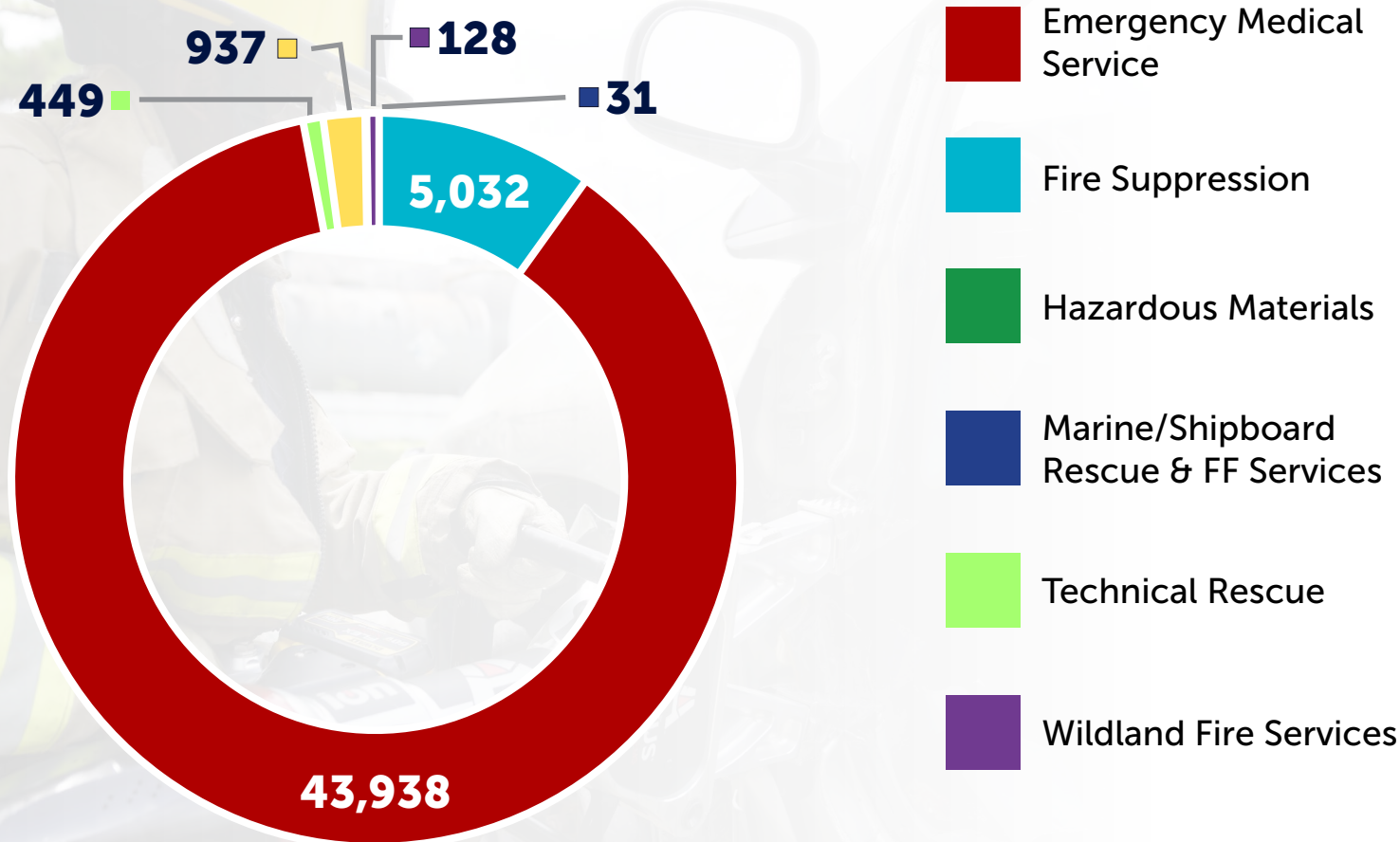
Value Saved

PRE-INCIDENT VALUE	LOSSES	VALUE SAVED
\$353,689,566	\$9,578,397	\$344,111,169

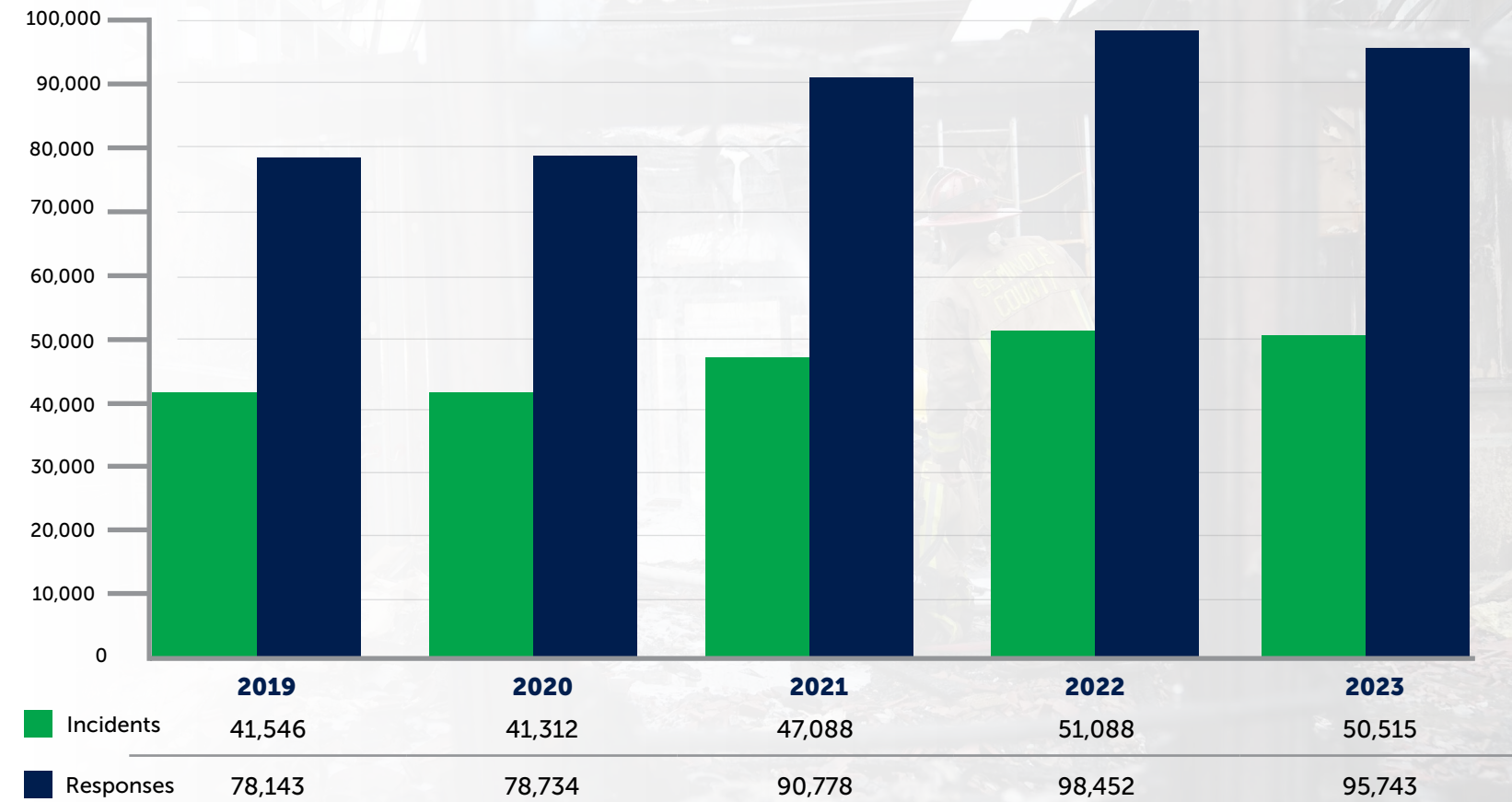
SCFD FACT: There are 153 personnel staffed per shift.



Incidents by Response Program Classification



Total SCFD Incidents & Responses By Calendar Year



*Incidents – A call for service prompting a unit response. | **Responses – When a unit and/or units respond to an incident. The call type dictates the number of units that respond.

MEDICAL DIRECTOR

EMS OPERATIONS



Seminole County's Medical Director Todd Husty speaks to media about SCFD's medical protocols and monthly meetings. These meetings lead SCFD personnel in discussion on recent EMS calls to help with quality assurance, dialogue, and training.

The Medical Director's Office establishes the **emergency medical protocols** that Paramedics and EMTs perform and practice under the Medical Director's license. It also oversees compliance and provides continuing education opportunities.

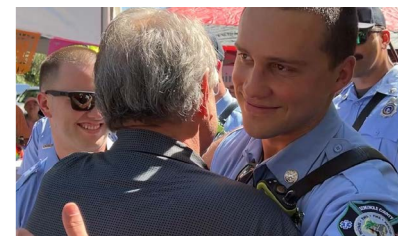
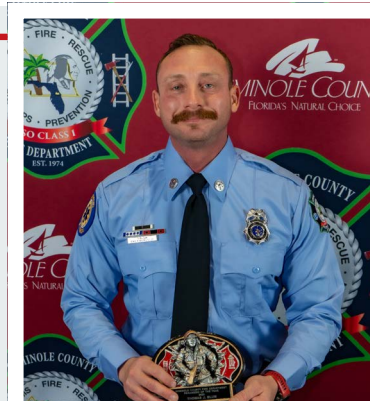
In 2023, SCFD awarded:

- 13 Life Saving Award Recognitions to 85 SCFD personnel, including dispatchers
- 10 Citizen Life Saving Awards

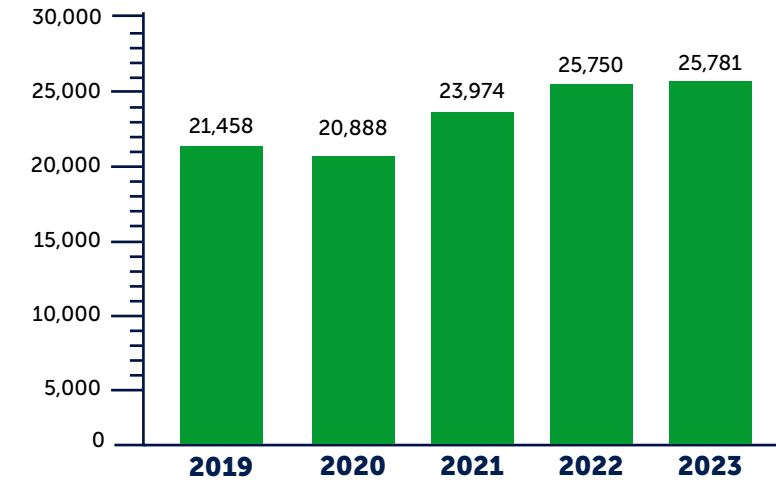


"Our Medical Director fosters a dynamic learning environment that elevates the quality of paramedics under his guidance by emphasizing continuous education, hands-on training, and open communication. Dr. Husty's commitment to excellence ensures that every paramedic is equipped with the latest medical knowledge and practical skills, enhancing patient care and safety."

- Firefighter/Paramedic Thomas Blum, SCFD's Paramedic of the Year



EMS TRANSPORTS

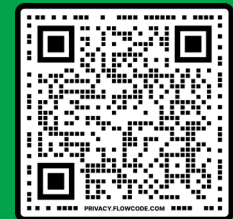


TRAUMA ALERTS: 191 | STROKE ALERTS: 552
CARDIAC ALERTS: 589 | STEMI ALERTS: 100
SEPSIS ALERTS: 662

PulsePoint

This app alerts users to a nearby cardiac arrest so they can perform CPR until help arrives.

There are nearly **6,900** monthly users and over **390** AEDs in Seminole County listed in PulsePoint.



DOWNLOAD THE APP

EDUCATING & EMPOWERING RESIDENTS

COMMUNITY PARAMEDICINE PROGRAM

The Community Paramedicine Program continued to make strides in its second year. SCFD paramedics made thousands of free home visits to patients.

This innovative and vital initiative addresses the diverse needs of specific patient demographics, such as patients who frequently call 911 for routine care. By harnessing the specialized skills of paramedics, the program offers invaluable guidance and support by empowering patients and connecting them to the right care and services they need.

DROWNING PREVENTION EDUCATION

In 2023, there were nine pediatric drowning calls in Seminole County, four of which resulted in deaths. To help prevent drownings, SCFD teamed up with the Gunner Martin Foundation to distribute educational materials and nearly 500 free door alarms to residents at Seminole County Library branches. The alarms alert parents if an unattended child accesses a door to a pool.

SCFD Firefighter Chris Martin and his wife Christina founded the Gunner Martin Foundation to raise awareness and educate others on drowning prevention. Martin was a football player for the University of Central Florida and the NFL who chose to become a Seminole County firefighter after the tragic pool drowning of his two-year-old son Gunner on April 6, 2016.

Firefighter Chris Martin was also honored with the "First Responder Award for Seminole County" by the Children's Safety Village for his work championing pool safety education.



Firefighter Chris Martin with his family and a photo of his late son Gunner.



FOR MORE INFORMATION



FOR MORE INFORMATION

 **2,842**
HOME VISITS

(up 29% from the previous year)

 **10-12%**
ENROLLMENT RATE

NEW STATIONS

FIRE STATION 39 GROUNDBREAKING

As Seminole County's population grows, so does the demand for emergency services. In 2023, SCFD broke ground on the new **Fire Station 39**, which will serve the Paola/Heathrow area. Currently in progress, the Department's 21st fire station will improve response times by a little over two minutes in large sections of the northwest area of the County. The new site will be located at 5639 First Street in Sanford at the intersection of Orange Boulevard and serve more than 11,000 residents.



FIRE STATION 11

SCFD partnered with the City of Altamonte Springs to relocate **Fire Station 11** to a new facility, which opened in December 2023 next to the Altamonte Springs SunRail station. Originally located in the City's municipal complex for more than four decades, the new 10,300-square-foot station is designed to accommodate the station's increased capabilities and needs.



FISCAL

TECHNOLOGY

BUDGET
\$81.9 Million

FIRE MILLAGE RATE
2.7649

MILLAGE RATE REMAINS
ONE OF THE LOWEST
IN THE REGION

At SCFD, 30 Firefighter positions are funded through a \$7.3 million federal grant for the Staffing for Adequate Fire and Emergency Response (SAFER Grant).

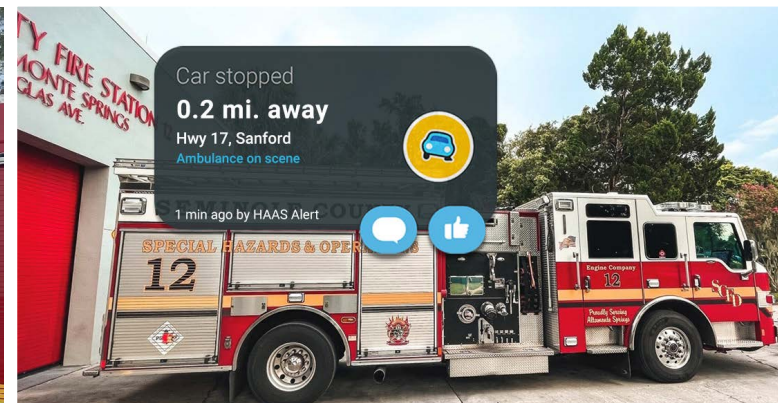
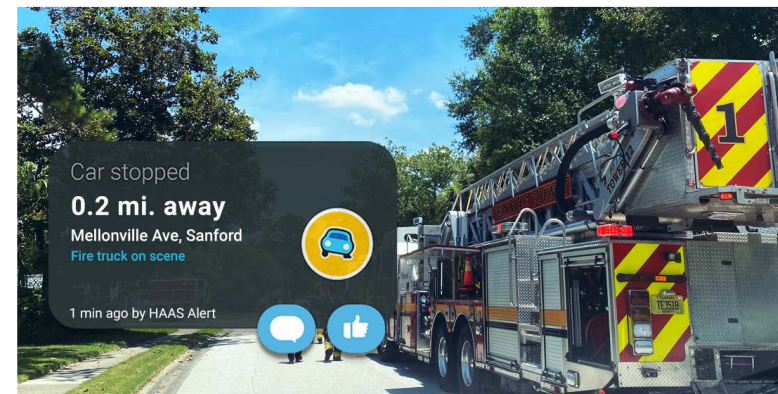
Fiscal Year 2023 Budget Breakdown

	FY23 Adopted Budget	FY23 Actuals	FY23 Expenditures
Personnel Services	\$65,930,171	\$68,631,986	77.5%
Operating Expenditures	\$7,170,613	\$7,989,215	9.0%
Internal Service Charges	\$5,745,429	\$6,425,342	7.3%
Capital Outlay	\$2,386,577	\$4,809,590	5.4%
Grants & Aids	\$731,636	\$751,489	0.8%
Interfund Transfers Out	-	\$471	0.0%
Grand Total	\$81,964,425	\$88,608,092	100.0%

574 Full-Time Personnel

CUTTING-EDGE TECHNOLOGY

SCFD installed new technology in all of its fire apparatus, which **digitally alerts drivers** via their car's dashboard systems when there is an accident nearby. This gives drivers a heads up on accidents so they can slow down, steer clear, and keep first responders and others safe.



PROFESSIONAL STANDARDS & TRAINING

SEMINOLE COUNTY
FIRE DEPARTMENT
DEPT. OF SAFETY



SCFD's 19-acre, 44,000-square-foot Fire Training Center in Longwood is a hub for all training related to fire services in Seminole County, including Fire, EMS, and Special Operations.

SPECIAL OPS TRAINING

- Confined Space Rescue
- Vehicle Machinery Rescue (VMR)
 - VMR Operations
 - VMR Technician
- Rope Rescue
 - Rope Operations
 - Rope Technician
 - Structural Tower Rescue
 - Advanced Rigging
 - Tree Rescue
- Structural Collapse Rescue
- Trench Rescue
- Water Rescue Training (Surface, Boat, and Dive)
- Hazardous Materials & Tech Training



Training Hours by Category in 2023

- Driver/Operator Training – **15,220 hours**
- EMS Training – **16,927 hours**
- Firefighter Training – **131,915 hours**
- Hazardous Materials Training – **4,317 hours**
- Officer Training – **16,539 hours**
- Recruit Training – **9,600 hours**
- Training Drills – **19,618 hours**
- Total Fire & EMS Training Hours: 214,136**

More than 80 Live Fire Training sessions were conducted at SCFD's Burn Building in 2023, with over 80% of the Department participating.



SCFD Fact: The Seminole County Fire Training Center offers recertification classes, technical training courses, and testing for many outside state and national agencies.

NEW HIRES & RECRUITMENT



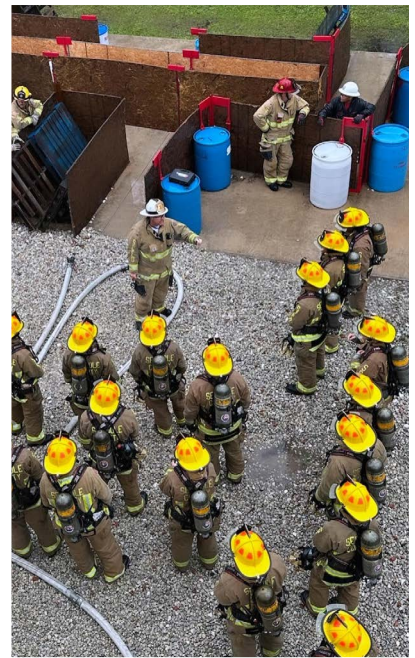
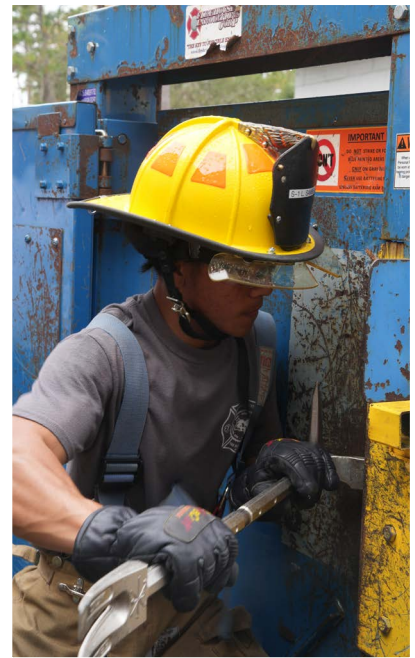
In 2023, three New Hire classes with a total of 40 recruits were trained and placed into Operations.

The Recruit Classes train for eight weeks at the SCFD Fire Training Center. Over 80% of the training is hands-on. The orientation is facilitated by Training Lieutenants as well as subject matter experts.

SCFD's Fire Training Center has a live burn prop, car fire prop, and propane cylinder prop.

In 2023, SCFD and Dispatch personnel attended more than 25 recruitment events at local fire colleges and Seminole County public high schools.

SCFD partners with the Seminole County Sheriff's Office, the U.S. Military, and Seminole County Public Schools for the "Get Informed About Uniforms" program to teach high school students about careers in public safety.



SCFD Fact: More than 60% of new recruits call Seminole County their hometown.

SPECIAL OPERATIONS



DEPLOYMENTS

The Urban Search & Rescue Central Florida Task Force 4 deployed to Taylor County in August 2023 in response to Hurricane Idalia. The mission of the US&R Team is to respond to natural and man-made disasters and to provide search and rescue, medical support, communications, and damage assessment. SCFD has 35 members on US&R Task Force 4.

Members of SCFD's Burn Team joined an interagency team with the State of Florida through the U.S. Forest Service and deployed to Eugene, Oregon to help fight wildfires.



SCFD is an all-hazards Fire Department with plenty of special teams and opportunities for training and professional growth.

SPECIAL TEAMS & OTHER OPPORTUNITIES

- Special Hazards & Operations Team (SHOT)
- Tower Team
- Tanker Team
- Prescribed Burn Team
- Bike Team
- Trail Responses
- Marine Unit Operations
- Dive Team
- Aviation Rescue Specialists (in cooperation with the Seminole County Sheriff's Office)
- Large Animal Rescue
- Honor Guard
- Peer Fitness Team
- Urban Search & Rescue Task Force
- Trainers and Instructors



"The Seminole County Fire Department has many specialized teams, and it offers lots of opportunities for everyone to grow. The opportunity for advancement is unlimited."

– Lt. Brad Myers, SHOT Training Lieutenant, hired in 2007

FIRE PREVENTION



The 11-member Fire Prevention team works to ensure the safety of businesses and residences. They educate and enforce the Fire Codes, which help businesses and homeowners mitigate and ultimately survive the most common fire hazards.



SCFD's Fire Marshal Christina Diaz was appointed as the East Central Director of the Florida Fire Marshals and Inspectors Association. She serves as one of six regional directors leading the 1,600 members at the organization.

SMOKE ALARM OUTREACH

Over the past year, SCFD distributed and installed **551** smoke alarms, making **285** homes safer.

SCFD also proudly partnered with the American Red Cross of Central Florida on three smoke detector outreach events.

After a houseboat fire, SCFD hosted a smoke detector installation event at a local boat marina during Fire Prevention Week. Crews installed smoke alarms on 23 boats.



American Red Cross, SFD, SCFD set record for smoke alarm installations

The Sanford Fire Department, the American Red Cross of Central Florida, and the Seminole County Fire Department recently set a record in the Greater Orlando area for smoke alarm installations. (Above, left, below) The group installed 372 free smoke alarms in 105 homes in Carriage Cove, a manufactured homes Sanford. The effort was part of Fire Prevention Week. More than 80 volunteers participated, including 3 in volunteers, 15 Youth Red Cross volunteers, 12 in volunteers, 24 MIRA USA volunteers, and 26 Seminole County Fire Department staff.

LOCAL Seminole County boat owners receive smoke alarms during Fire Prevention Week



SCFD URGES SMOKE DETECTORS ON HOUSE BOATS
SANFORD, SEMINOLE COUNTY



SCFD FACT: SCFD offers free hearing impaired smoke alarms.

2,503
NEW
INSPECTIONS
up 3%*

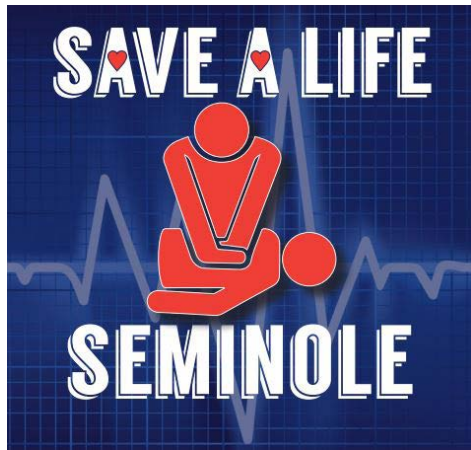
89
FIRE
INVESTIGATIONS

4,456
PLANS REVIEWED
up 28%*

7,500
EXISTING
INSPECTIONS
up 47%*

*compared to 2022.

PUBLIC INFORMATION & COMMUNITY OUTREACH



The Save a Life Seminole Hands-Only CPR program **trained 1,772 residents**, a **50% increase** from the previous year.

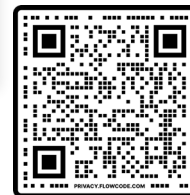
SCFD values its partnership with Seminole County Public Schools, which requires its 9th and 11th graders to learn basic first aid and CPR.

A life saving lesson to local high school students from the Seminole County Fire Department



Special to the Herald
 Personnel from the Seminole County Fire Department recently taught more hands-only CPR and AED use to more than 1,000 9th and 11th grade students at Winter Springs High School.
 Florida House Bill 157 (2021 Legislative) requires school districts to provide basic training in first aid, including CPR for students in 9th and 11th grades. Seminole County Firefighters/Paramedics and the Community Outreach Team trained the students. The students rotated through classes throughout the day and watched a CPR video and then conducted

FOR MORE INFORMATION



SCFD takes a proactive approach to educating residents through the local media on important public safety topics. This year, the public information team handled more than **1,000 media inquiries and stories.**

BIG BEAR HUGS: Rotary Club of Lake Mary donates 'Trauma Teddy Bears' to Seminole County Fire Department



Seminole County Fire Department Firefighter Chris O'Neill with the donated 'Trauma Teddy Bears' from Rotary Club of Lake Mary.

Special to the Herald
 When Seminole County Fire Department Firefighter Chris O'Neill runs medical or fire calls out of Station 24 in Winter Springs, he has noticed numerous times that children are overwhelmed or frightened. It could be from a seizure or even having to be in the back of a Rescue (ambulance) to be transported to the hospital. Sometimes he even blows up surgical gloves as balloons to give to the children to distract them from a scary situa-

See BEARS, Page 6

Dropping off donations



LT Tim Van Fleet, from left, firefighter/EMT Cooper Knicely, firefighter Jared Agin and technician Kevin Magula load donated school supplies onto a cart Thursday. Seminole County Fire Department personnel drop off donations of school supplies collected throughout the county to 106 of Seminole County's 106 public schools. The Foundation for Seminole County Public Schools supply drop that offers free classroom essentials to teachers. Donations were collected at all Seminole County Fire Department stations and Seminole County Library branches. RICARDO RAMIREZ BUZUELA/ORLANDO SENTINEL

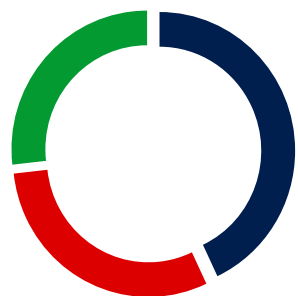
The Department participated in **676** Community Outreach Events, averaging **56 events** per month and reaching more than **122,813** residents! Events included:

- Fire station visits
- Community educational events, including CPR classes, health fairs, school visits
- Recruitment events
- Car seat installations/checks

This year, SCFD Certified Child Passenger Safety Technicians helped install and inspect 102 car seats, a 36% increase from the previous year.

EMERGENCY COMMUNICATIONS

SCFD's 911 Emergency Communications Team consists of **37** personnel. Dispatchers work four different 12-hour shifts.



- Calls to 911: 55,222
- Inbound Non-Emergency Calls: 38,873
- Outbound Non-Emergency Calls: 34,389

Total Calls: 128,484

The SCFD Emergency Communications Center fields after-hour calls for Animal Services, Public Works, Traffic Engineering, Environmental Services, and Fleet and Facilities.

BUSIEST DAY
356
calls on 10/4/2023

BUSIEST HOUR OF THE DAY
5,845
calls during the 12 p.m. hour

AVERAGE 911 CALLS ANSWERED PER DAY
151

CALLS ANSWERED WITHIN 10 SECONDS
97.6%

TRAINING & LEARNING



SCFD Dispatchers spend time learning what crews do in the field. New crew members also shadow Dispatchers to better understand Communications Center operations.



Delta Shift learns hands-only CPR.



Dispatcher Nora Acuna was recognized with a "Stork Club" award for assisting with a birth of a baby over the phone. She met Riley, the baby she delivered, along with her family.



SCFD FLEET

NUMBER OF FRONTLINE UNITS

- 16 Engines
- 21 Rescues
- 6 Aerials (4 Towers and 2 Quints)
- 1 Squad Heavy Rescue
- 5 Tankers
- 8 Woods Trucks
- 8 Marine Units
- 5 UTVs
- 2 High-Water vehicles
- 1 Bariatric Transport Unit
- 1 Mobile Command Unit
- 1 Mass Casualty Unit
- 1 AmbuBus
- 1 Rehab Unit
- 4 Battalions
- 1 EMS 1
- 1 Incident Command Technician (Tech 1)

**Photos courtesy of Stephen Faulk, Norman Reyburn, and Seth Reynolds*



SCFD FLEET



FIRE STATIONS

NEW UNITS

Following the flooding caused by Hurricane Ian in 2022, SCFD needed to upgrade its two older high-water vehicles, built in 1968. Using federal funds from the American Rescue Plan Act (ARPA), the County purchased two new 6x6 high-water vehicles. These multi-purpose vehicles (TSU1 & TSU2) help residents during emergencies, including hurricanes, storms, and brushfires.



Abbreviation Key

E = Engine | R = Rescue | T = Tower | Q = Quint | TK = Tanker | WD = Woods Truck
 BT = Boat | ATV = All Terrain Vehicle | BC = Battalion Chief

BATTALION 1



Station 11

Constructed in 2023

SERVING ALTAMONTE SPRINGS

2721 S. Ronald Reagan Boulevard, Altamonte Springs

4th Busiest Station

Unit Responses:

E11 – 3,217

R11 – 3,248

Other Units:

WD11

BT11

ATV11



Station 12

Constructed in 1985

SERVING ALTAMONTE SPRINGS

325 Douglas Avenue,
Altamonte Springs



Unit Responses:

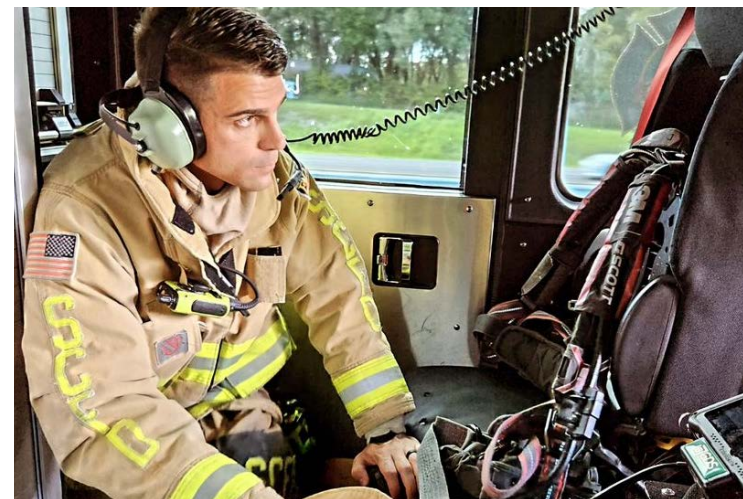
E12 – 4,176

R12 – 3,856

T12 – 1,862

Other Units:

BC1

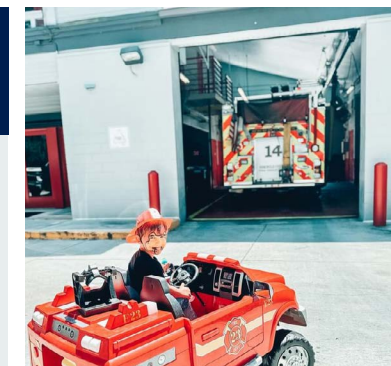


Station 14

Constructed in 1992

SERVING ALTAMONTE SPRINGS

600 Hattaway Drive,
Altamonte Springs



Unit Responses:

E14 – 1,486



Station 13

Constructed in 2008

**SERVING FOREST CITY/
BEAR LAKE**

3860 East State Road 436,
Apopka



Unit Responses:

E13 – 3,943

R13 – 3,324

T39 – 1,496

R14 – 1,091*

Other Units:

TK13

**Peak load unit operates 9 A.M. – 5 P.M.,
Monday – Friday*



Station 22

Constructed in 1984

SERVING FERN PARK

7122 US Highway 17-92,
Casselberry



Unit Responses:

E22 – 2,782

R22 – 2,703

BATTALION 2



Station 21

Constructed in 2005

SERVING CASSELBERRY

681 Seminola Boulevard,
Casselberry

**Peak load unit operates 9 A.M. – 5 P.M.,
Monday – Friday*

Unit Responses:

E21 – 2,487

R21 – 2,148

R28 – 814*

Other Units:

EMS1



Station 25

Constructed in 1975

SERVING CASSELBERRY

1055 Red Bug Lake Road,
Casselberry



Unit Responses:

T25 – 2,837

R25 – 2,558



Station 23

Constructed circa 1970

**SERVING HOWELL
BRANCH**

4810 Howell Branch Road,
Winter Park



Unit Responses:

E23 – 2,025

R23 – 1,934



Station 26

Constructed in 1994

**SERVING WINTER
SPRINGS/TUSKAWILLA**

850 Northern Way,
Winter Springs



Unit Responses:

E26 – 1,705

R26 – 1,646



Station 27

Constructed in 1990

**SERVING
WINTER SPRINGS**

5280 Red Bug Lake Road,
Winter Springs



Unit Responses:

E27 – 2,830

R27 – 2,293

T27 – 1,046

Other Units:

BC2

BATTALION 3



Station 16

Constructed in 1984

**SERVING WEKIVA
SPRINGS/SABAL POINT**

930 Wekiva Springs Road,
Longwood



Unit Responses:

E16 – 2,175

R16 – 2,440

Other Units:

WD16

BT16



Station 29

Constructed in 2018

**SERVING JAMESTOWN/
ALOMA WOODS**

2300 Via Loma Drive,
Oviedo



Unit Responses:

E29 – 1,101

R29 – 1,056

Other Units:

WD29



Station 34

Constructed in 1981

SERVING PAOLA/SANFORD

4905 Wayside Drive,
Sanford



Unit Responses:

Q34 – 2,972

R34 – 2,370

Other Units:

WD34 TK34

BT34 ATV34

BT39



Station 35

Constructed in 1989

SERVING SANFORD

201 West County Home Road,
Sanford

Unit Responses:

E35 – 1,951

R35 – 1,822

Squad 2 – 1,180

Other Units:

BT35

WD35

Dive Unit 35

BATTALION 4



Station 24

Constructed in 1975

SERVING WINTER SPRINGS

102 North Moss Road,
Winter Springs



Unit Responses:

Q24 – 1,918

R24 – 1,823

Other Units:

TK24

Tech1



Station 36

Constructed in 1985

**SERVING LAKE MARY/
HEATHROW**

6200 West Lake Mary
Boulevard, Lake Mary



Unit Responses:

E36 – 2,624

R36 – 2,141

Other Units:

BC3



Station 41

Constructed in 1981

SERVING MIDWAY

3355 East State Road 46,
Sanford

Unit Responses:

E41 – 1,613

R41 – 1,812

Other Units:

WD41

ATV41

BT41

BC4



Station 42

Constructed in 1990

SERVING GENEVA

320 West State Road 46,
Geneva

Unit Responses:

E42 – 672
R42 – 646

Other Units:

TK42
WD42
Airboat 42
ATV42



Station 65

Constructed in 2000

SERVING UCF/CARILLON

*Joint Station with Orange County
Fire Rescue Department*

4999 North Orion Boulevard, Orlando

Unit Responses:

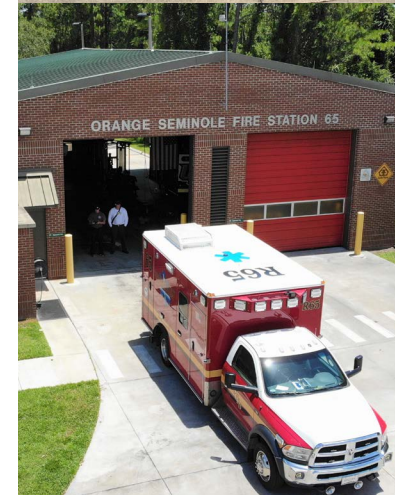
Seminole County Rescue 65 – 1,827**

Orange County Jurisdiction 906
Seminole County Jurisdiction 912

Orange County Engine 65 – 1,637**

Orange County Jurisdiction 724
Seminole County Jurisdiction 912

****Some calls run outside Seminole & Orange County Jurisdiction**



Station 43

Constructed in 1984

SERVING CHULUOTA

110 East 7th Street,
Chuluota



Unit Responses:

E43 – 635
R43 – 601

Other Units:

WD43
ATV43

