

Summary	Census 2010	Census 2020	2024	2029
Population	33,342	38,342	38,857	38,987
Households	13,128	15,196	15,598	16,014
Families	9,450	10,653	10,861	11,114
Average Household Size	2.54	2.52	2.49	2.43
Owner Occupied Housing Units	10,315	10,890	11,649	12,396
Renter Occupied Housing Units	2,813	4,306	3,949	3,618
Median Age	41.7	41.5	42.3	43.4

Trends: 2024-2029 Annual Rate	Area	State	National
Population	0.07%	0.93%	0.38%
Households	0.53%	1.15%	0.64%
Families	0.46%	1.12%	0.56%
Owner HHs	1.25%	1.66%	0.97%
Median Household Income	3.27%	3.25%	2.95%

Households by Income	2024		2029	
	Number	Percent	Number	Percent
<\$15,000	914	5.9%	714	4.5%
\$15,000 - \$24,999	493	3.2%	330	2.1%
\$25,000 - \$34,999	655	4.2%	480	3.0%
\$35,000 - \$49,999	1,087	7.0%	838	5.2%
\$50,000 - \$74,999	3,044	19.5%	2,666	16.6%
\$75,000 - \$99,999	2,693	17.3%	2,709	16.9%
\$100,000 - \$149,999	2,385	15.3%	2,764	17.3%
\$150,000 - \$199,999	1,706	10.9%	2,292	14.3%
\$200,000+	2,621	16.8%	3,221	20.1%

Median Household Income	\$87,985	\$103,364
Average Household Income	\$128,174	\$149,434
Per Capita Income	\$51,452	\$61,381

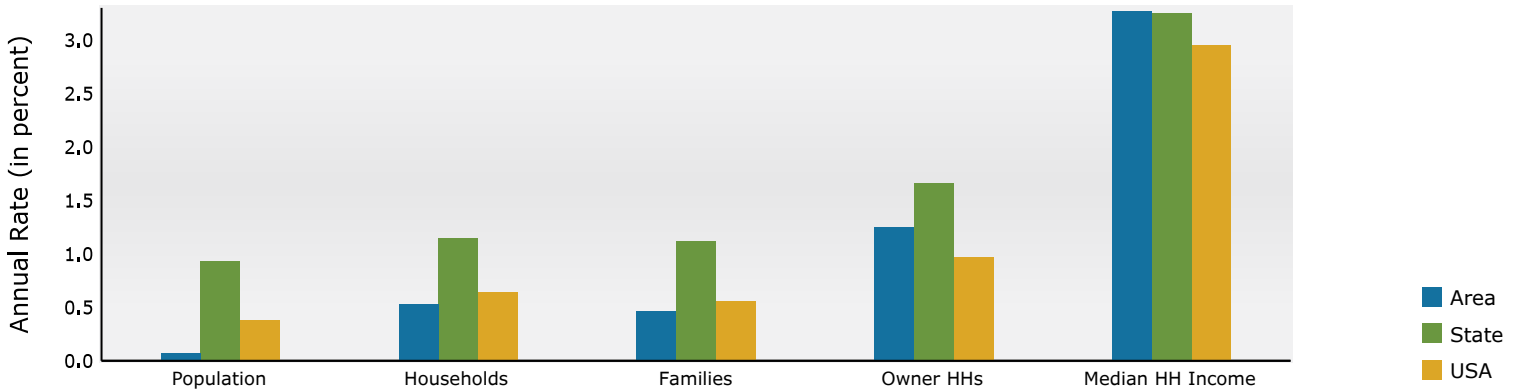
Population by Age	Census 2010		Census 2020		2024		2029	
	Number	Percent	Number	Percent	Number	Percent	Number	Percent
0 - 4	1,484	4.5%	1,766	4.6%	1,774	4.6%	1,760	4.5%
5 - 9	1,858	5.6%	2,291	6.0%	2,072	5.3%	1,907	4.9%
10 - 14	2,406	7.2%	2,446	6.4%	2,390	6.2%	2,155	5.5%
15 - 19	2,664	8.0%	2,374	6.2%	2,247	5.8%	2,155	5.5%
20 - 24	1,888	5.7%	2,276	5.9%	2,254	5.8%	2,044	5.2%
25 - 34	3,585	10.8%	4,624	12.1%	4,817	12.4%	5,010	12.9%
35 - 44	4,387	13.2%	4,971	13.0%	5,362	13.8%	5,297	13.6%
45 - 54	5,913	17.7%	5,005	13.1%	4,967	12.8%	5,115	13.1%
55 - 64	4,710	14.1%	5,445	14.2%	5,120	13.2%	4,731	12.1%
65 - 74	2,484	7.5%	4,418	11.5%	4,561	11.7%	4,729	12.1%
75 - 84	1,470	4.4%	2,016	5.3%	2,542	6.5%	3,149	8.1%
85+	493	1.5%	710	1.9%	751	1.9%	935	2.4%

Race and Ethnicity	Census 2010		Census 2020		2024		2029	
	Number	Percent	Number	Percent	Number	Percent	Number	Percent
White Alone	28,868	86.6%	26,839	70.0%	26,422	68.0%	25,640	65.8%
Black Alone	1,835	5.5%	2,572	6.7%	2,652	6.8%	2,727	7.0%
American Indian Alone	86	0.3%	101	0.3%	121	0.3%	122	0.3%
Asian Alone	863	2.6%	1,390	3.6%	1,623	4.2%	1,774	4.6%
Pacific Islander Alone	20	0.1%	28	0.1%	35	0.1%	33	0.1%
Some Other Race Alone	883	2.6%	2,157	5.6%	2,283	5.9%	2,434	6.2%
Two or More Races	787	2.4%	5,255	13.7%	5,721	14.7%	6,257	16.0%
Hispanic Origin (Any Race)	4,989	15.0%	7,864	20.5%	8,511	21.9%	9,297	23.8%

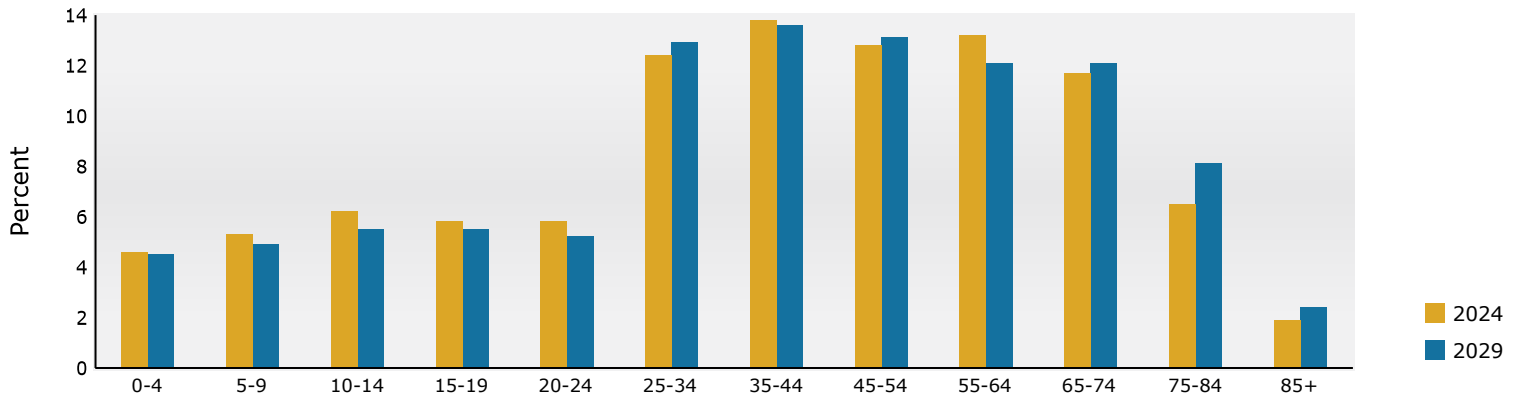
**Data Note:** Income is expressed in current dollars.

**Source:** Esri forecasts for 2024 and 2029. U.S. Census Bureau 2020 decennial Census in 2020 geographies.

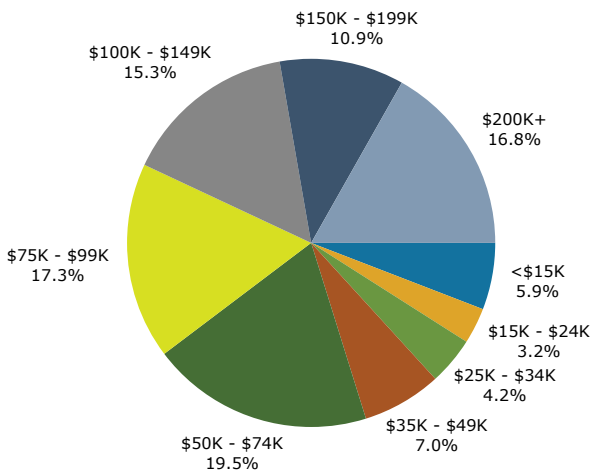
## Trends 2024-2029



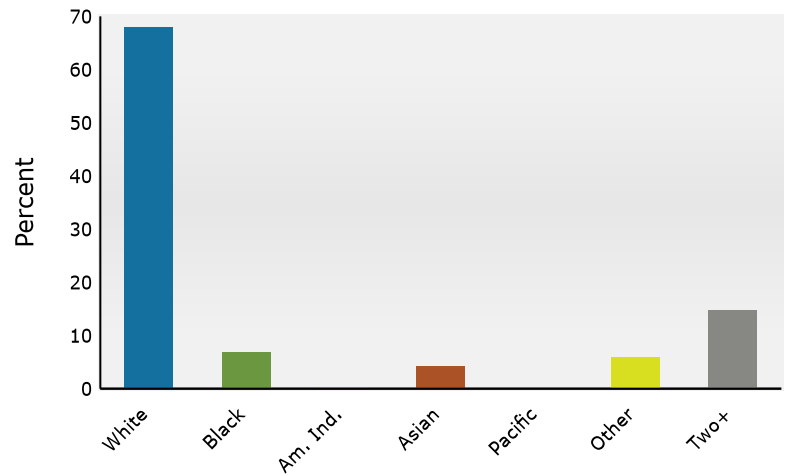
## Population by Age



## 2024 Household Income



## 2024 Population by Race



2024 Percent Hispanic Origin: 21.9%

Source: Esri forecasts for 2024 and 2029. U.S. Census Bureau 2020 decennial Census in 2020 geographies.