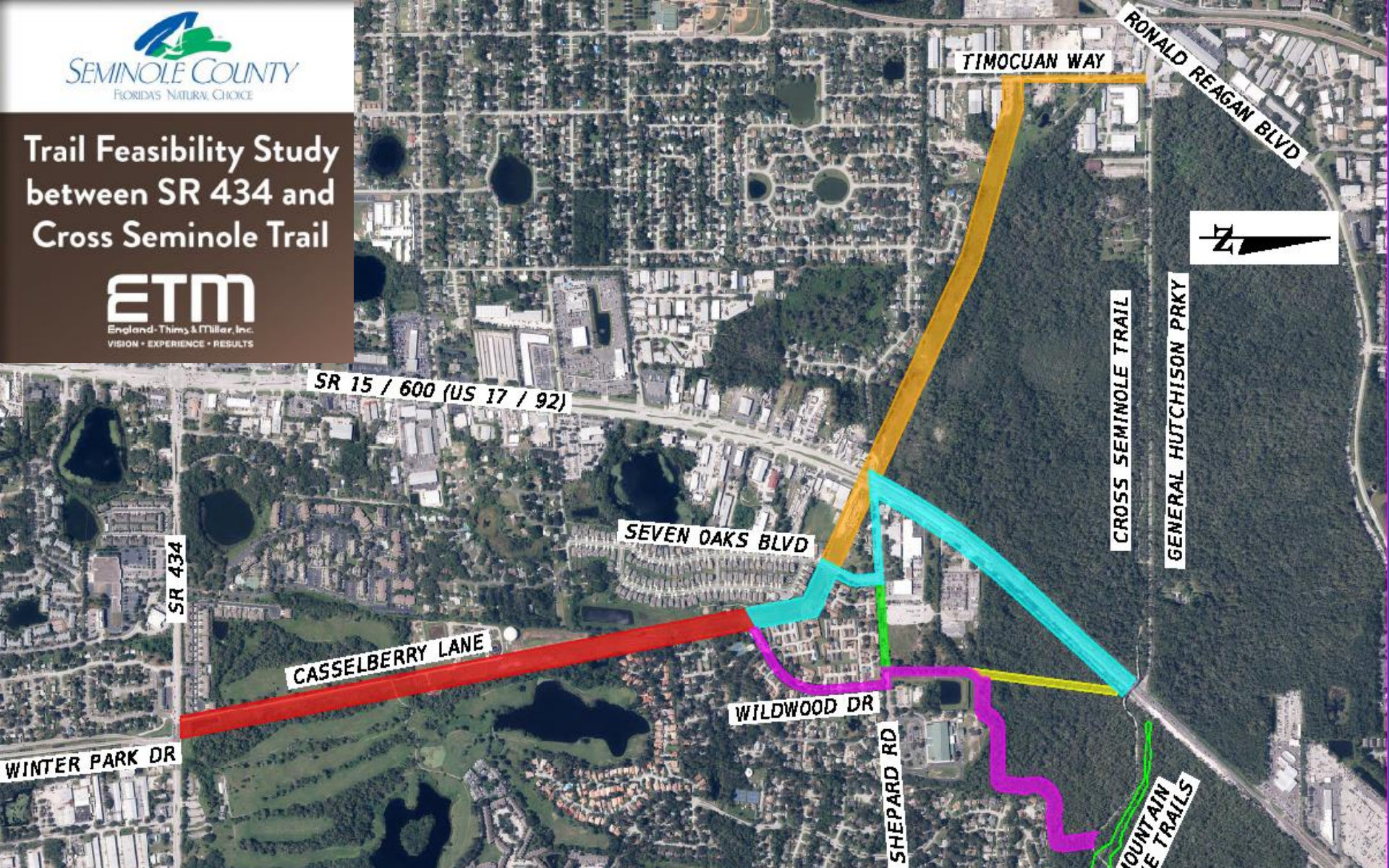


Trail Feasibility Study between SR 434 and Cross Seminole Trail



TIMOCUAN WAY

RONALD REAGAN BLVD



CROSS SEMINOLE TRAIL

GENERAL HUTCHISON PRKY

SR 15 / 600 (US 17 / 92)

SEVEN OAKS BLVD

SR 434

CASSELBERRY LANE

WILDWOOD DR

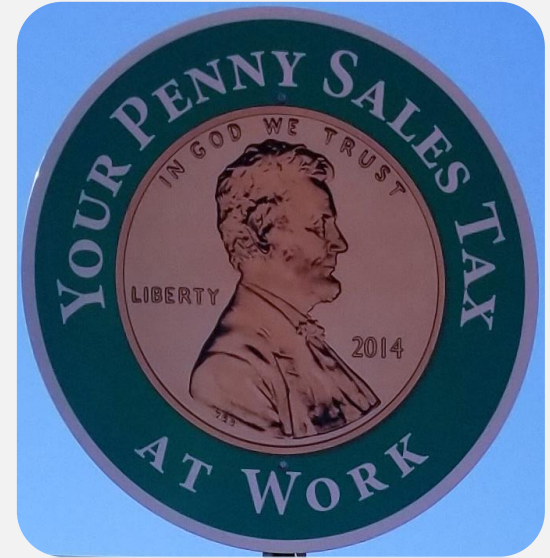
SHEPARD RD

MOUNTAIN E TRAILS

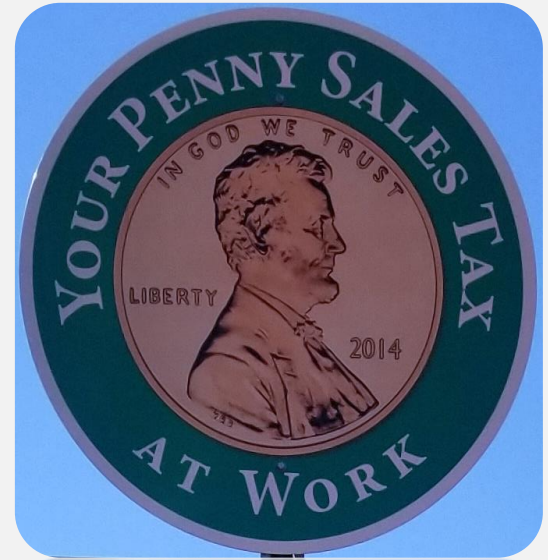
WINTER PARK DR

Agenda

- Introduction
- Alignments
- Typical Sections
- Alternatives Evaluation
- Recommendation



Introduction



Project Purpose & Need

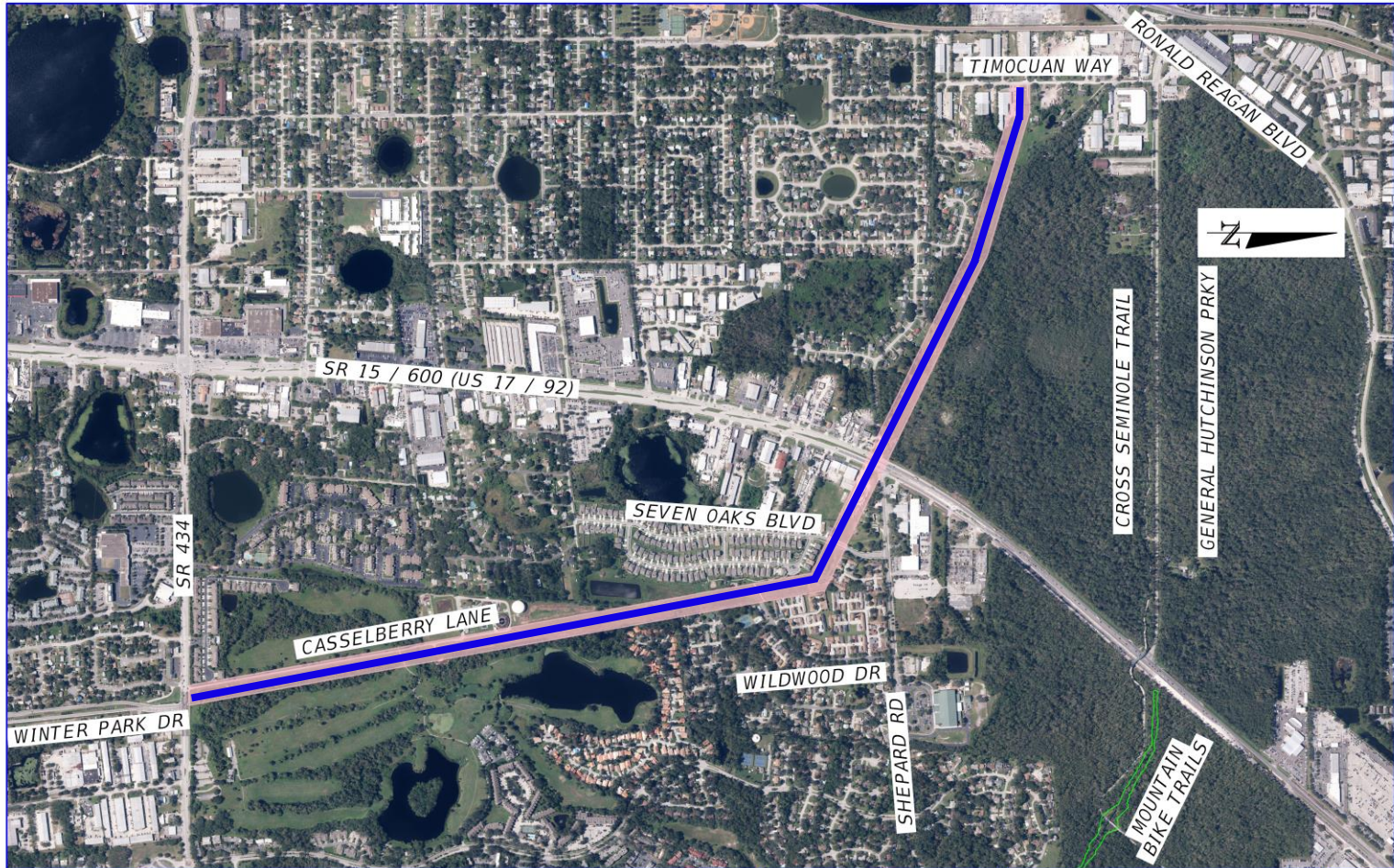
Purpose

The Seminole County Public Works Engineering Division is conducting a feasibility study to evaluate the viability of constructing a trail facility from SR 434, at Winter Park Drive, to the Cross Seminole Trail, via the Duke Energy Powerline Corridor and Shepard Road.

Need

This trail is identified in the Sales Tax Referendum and is a proposed major trail in the Seminole County Trail Master Plan. It is intended to provide a north-south connection from the City of Casselberry to the Cross Seminole Trail. In addition, this trail is intended to be part of a larger trail from the City of Casselberry to the City of Lake Mary called the Seminole Central Trail.

Powerline Corridor



 POWERLINE CORRIDOR

ETM
 VISION • EXPERIENCE • INTEGRITY
 JASON WADE MCCRAY, P.E.

Engineering, Planning & Architecture, Inc.
 1333 International Parkway, Suite 1011
 Lake Mary, FL 32746
 TEL: (407) 536-6379
 CA - 0002084 LC - 0000316
 LICENSE NO. 68067


SEMINOLE COUNTY
 FLORIDA'S NATURAL CHOICE
SUSERS

FEASIBILITY STUDY FOR TRAIL BETWEEN
 SR 434 AND THE CROSS SEMINOLE TRAIL
 POWERLINE CORRIDOR

ALIGNMENT
 NO.

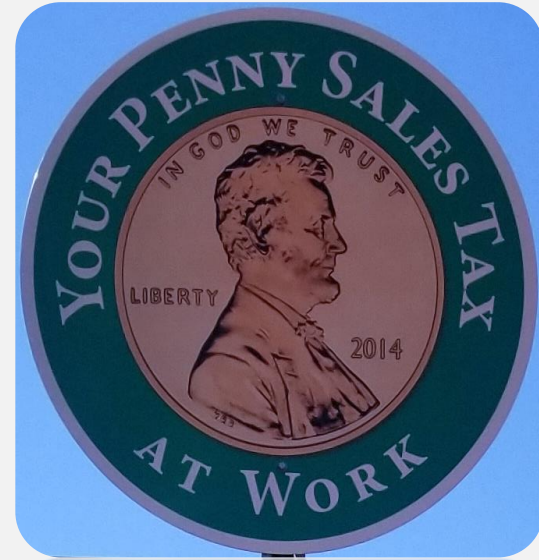
DATE: 06/20/2018 TIME: 10:00 AM

Feasibility Study

This Study Analyzed

- Engineering Feasibility
- Environmental Impacts
- Permitting Requirements
- Public Acceptance
- Construction Cost

Alignments



Alignment 1: Uses Wildwood Drive and Crosses Soldier Creek

- **Red** - Located along Duke Power Line
- **Magenta** – Uses Wildwood Drive and Crosses Soldiers Creek
- Natural view shed thru trees
- Bridge required in order to maintain the drainage flow within Soldiers Creek the floodplain
- Residents do not support Wildwood Drive alignment



█ CORRIDOR 1
█ CORRIDOR 2

ETM
 ENGINEERING & TRAIL MANAGEMENT
 JASON WADE MCCRAY, P.E.
 1200 International Parkway, Suite 1011
 Lake Mary, FL 32746
 TEL: 407.575.0164
 CA-1092204 LC-300018
 LICENSE NO. 6887

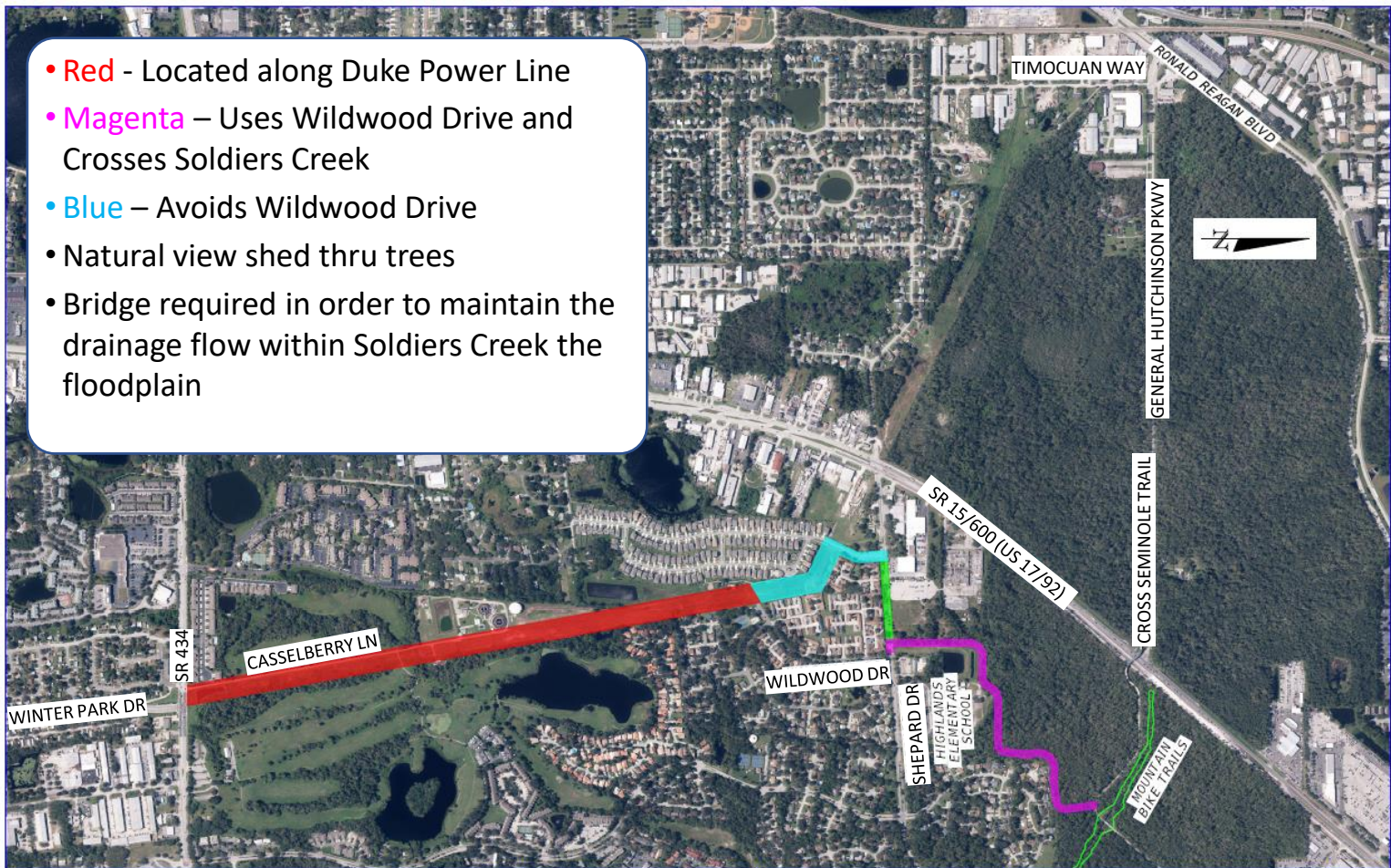
SEMINOLE COUNTY
 FLORIDA'S NATURAL CHOICE

FEASIBILITY STUDY FOR TRAIL BETWEEN
 SR 434 AND THE CROSS SEMINOLE TRAIL
 ALIGNMENT LOCATION

ALIGNMENT NO.
1

Alignment 2: Avoids Wildwood Drive and Crosses Soldier Creek

- **Red** - Located along Duke Power Line
- **Magenta** – Uses Wildwood Drive and Crosses Soldiers Creek
- **Blue** – Avoids Wildwood Drive
- Natural view shed thru trees
- Bridge required in order to maintain the drainage flow within Soldiers Creek the floodplain



█ CORRIDOR 1	█ CORRIDOR 3
█ CORRIDOR 2	█ CORRIDOR 4

ETM
 ENGINEERING & TRAIL MANAGEMENT
 JASON WADE MCCRAY, P.E.
 CA - 19322564 LC - 3005316
 LICENSE NO. 08887

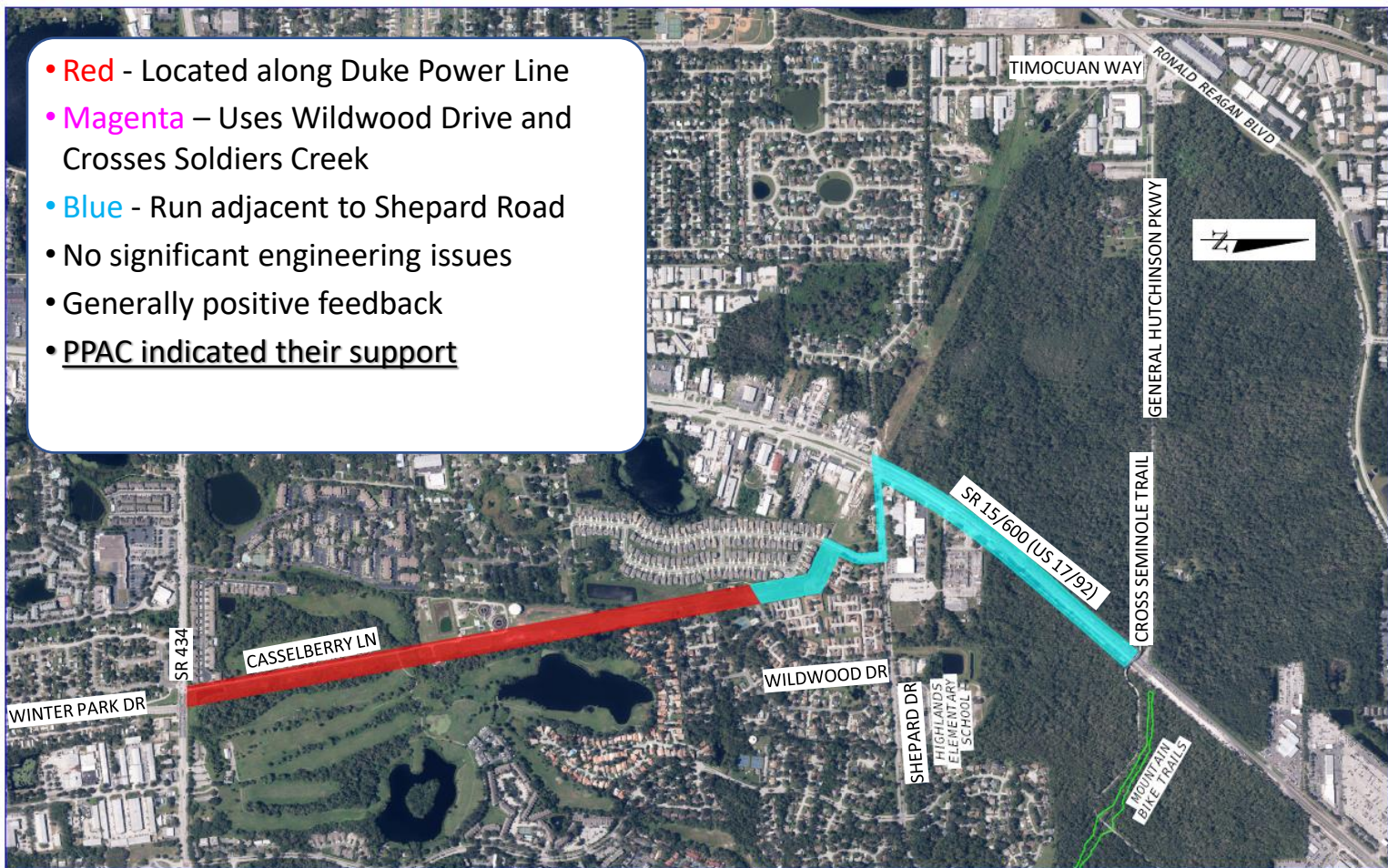
SEMINOLE COUNTY
 FLORIDA'S NATURAL CHOICE

FEASIBILITY STUDY FOR TRAIL BETWEEN
 SR 434 AND THE CROSS SEMINOLE TRAIL
 ALIGNMENT LOCATION

ALIGNMENT NO.
2

Alignment 3: Adjacent to US 17/92

- **Red** - Located along Duke Power Line
- **Magenta** – Uses Wildwood Drive and Crosses Soldiers Creek
- **Blue** - Run adjacent to Shepard Road
- No significant engineering issues
- Generally positive feedback
- PPAC indicated their support



 CORRIDOR 1
 CORRIDOR 4

ETM
ENGINEERING + TRAILMASTERS
JASON WADE MCCRAY, P.E.
1525 Stewart Street, Suite 1011
Lakeland, FL 33809
TEL: 888.755.8543
CA: 0092284 LC: 000316
LICENSE NO. 68857

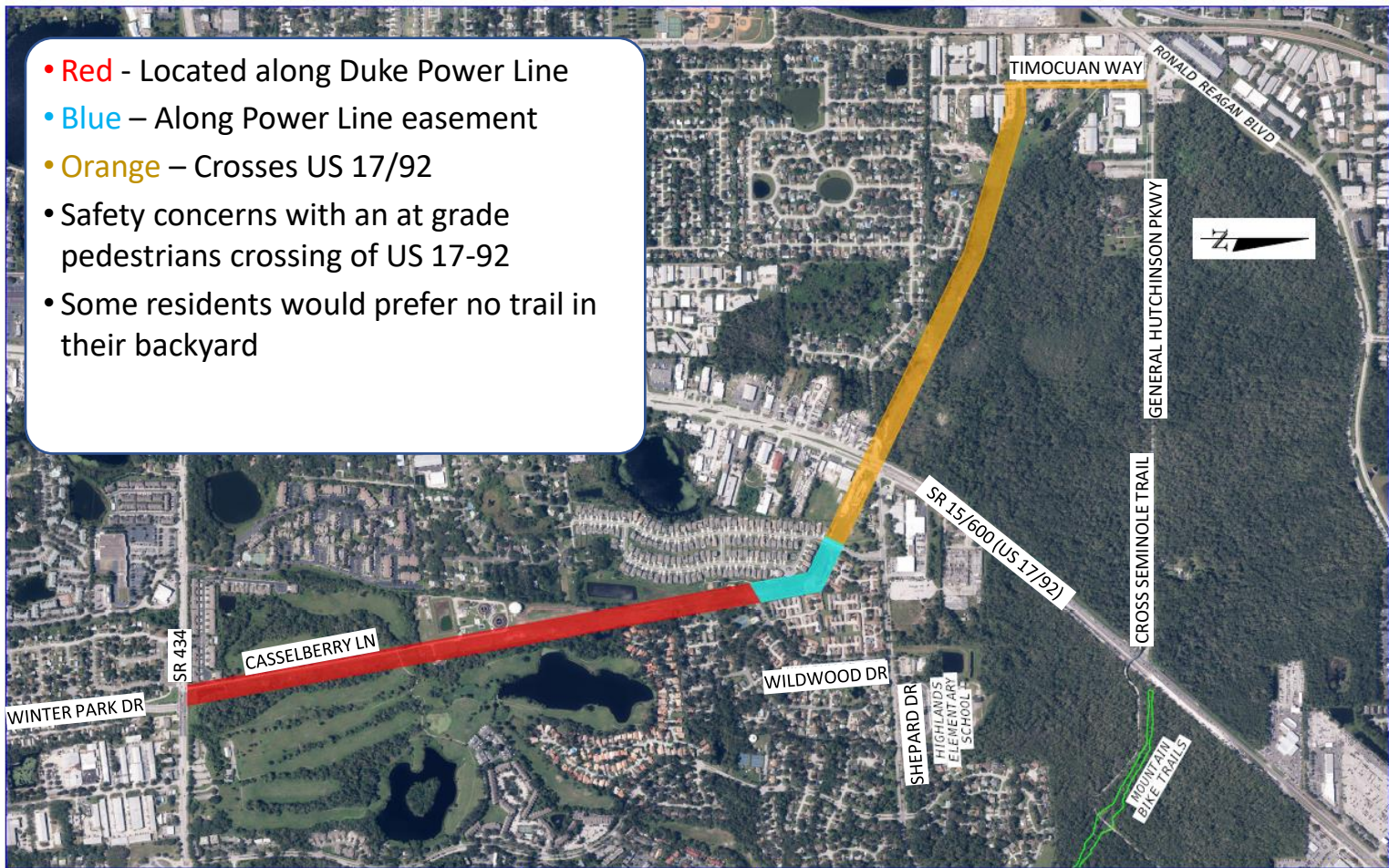

SEMINOLE COUNTY
FLORIDA'S NATURAL CHOICE

FEASIBILITY STUDY FOR TRAIL BETWEEN
SR 434 AND THE CROSS SEMINOLE TRAIL
ALIGNMENT LOCATION

ALIGNMENT
NO.
3

Alignment 4: Crosses US 17/92

- **Red** - Located along Duke Power Line
- **Blue** – Along Power Line easement
- **Orange** – Crosses US 17/92
- Safety concerns with an at grade pedestrians crossing of US 17-92
- Some residents would prefer no trail in their backyard



ETM Engineering & Planning
 1325 International Parkway, Suite 1011
 Lake Mary, FL 32746
 TEL: (407) 826-9370
 CA - 0032204 LC - 3000318
 LICENSE NO. 68087

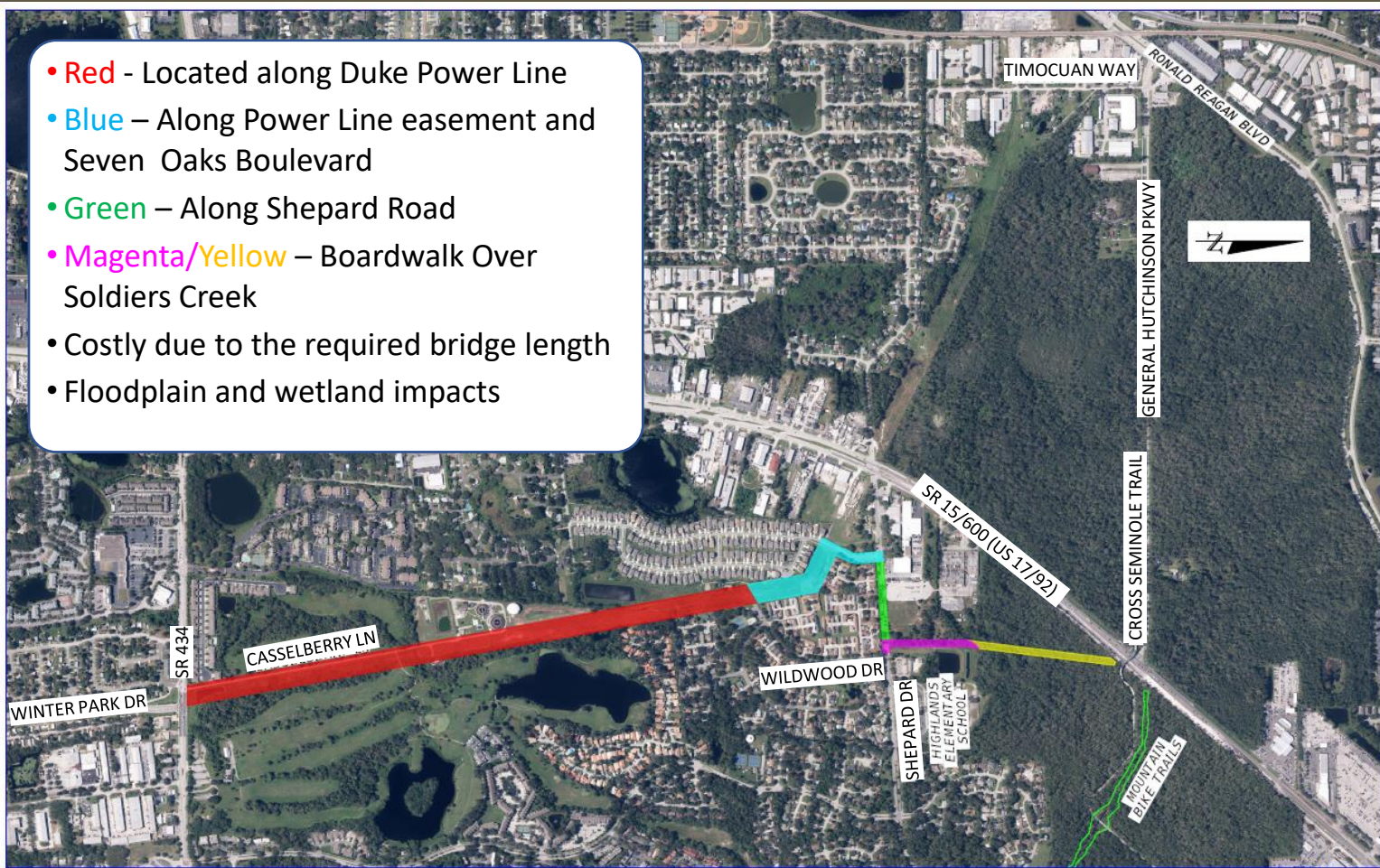
SEMINOLE COUNTY
 FLORIDA'S NATURAL CHOICE

FEASIBILITY STUDY FOR TRAIL BETWEEN
 SR 434 AND THE CROSS SEMINOLE TRAIL
 ALIGNMENT LOCATION

ALIGNMENT NO.
4

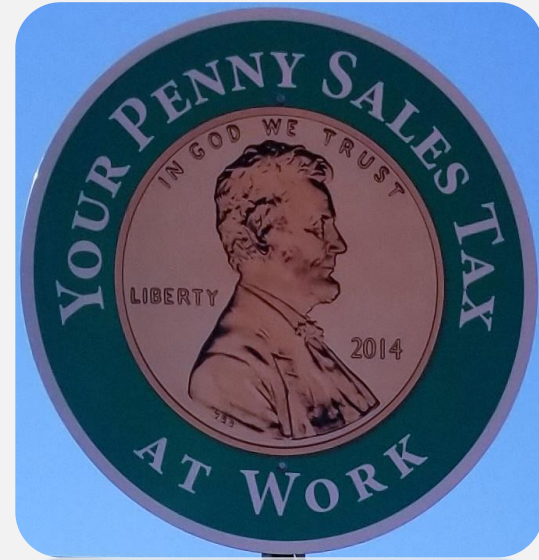
Alignment 5: Boardwalk over Soldiers Creek

- **Red** - Located along Duke Power Line
- **Blue** – Along Power Line easement and Seven Oaks Boulevard
- **Green** – Along Shepard Road
- **Magenta/Yellow** – Boardwalk Over Soldiers Creek
- Costly due to the required bridge length
- Floodplain and wetland impacts

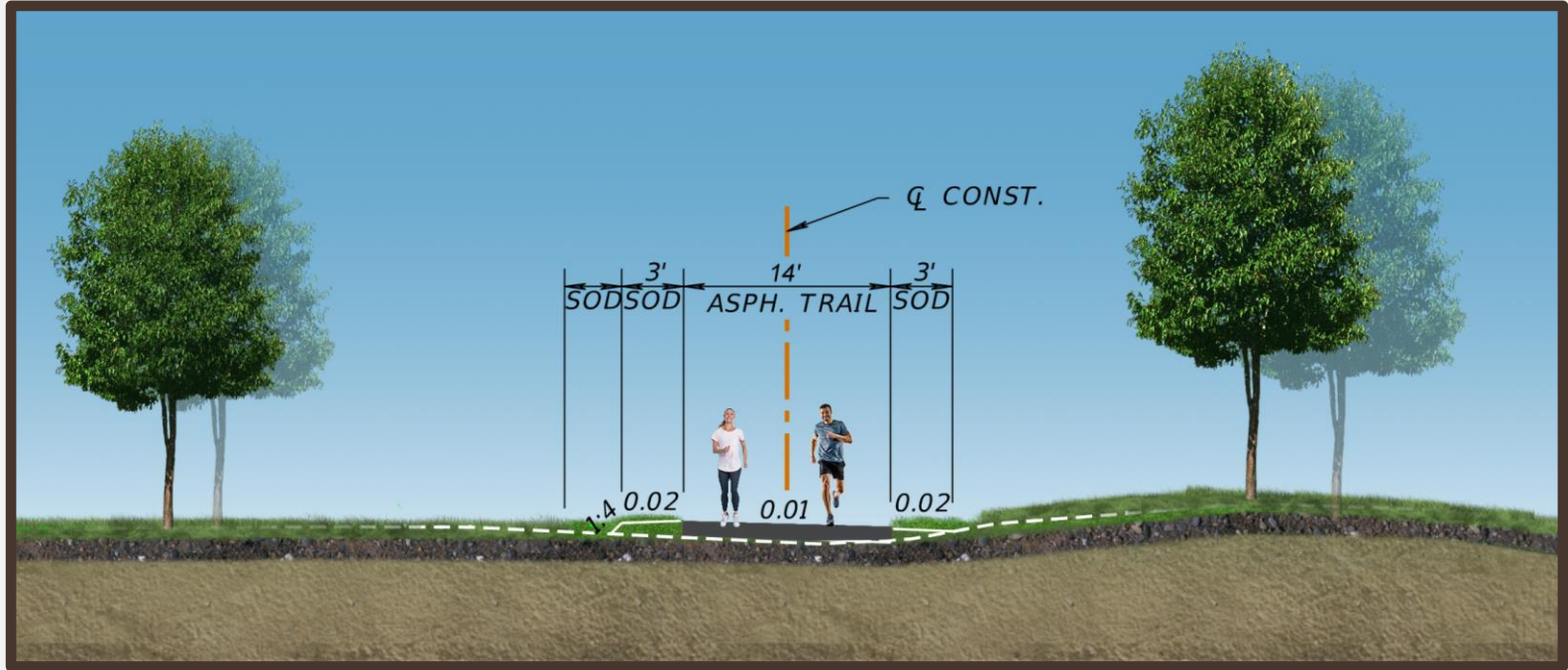


 CORRIDOR 1	 CORRIDOR 3	 CORRIDOR 6	 <p><small>Professional Planning & Survey, Inc. 1200 UNIVERSITY BLVD, SUITE 1011 TALLAHASSEE, FLORIDA 32310 TEL: 904.753.8443 CA: 6032264 LC: 000516 JASON WADE MCCRAY, P.E. LICENSE NO. 65067</small></p>	 <p><small>SEMINOLE COUNTY FLORIDA'S NATURAL CHOICE</small></p>	<p><i>FEASIBILITY STUDY FOR TRAIL BETWEEN SR 434 AND THE CROSS SEMINOLE TRAIL ALIGNMENT LOCATION</i></p>	ALIGNMENT NO.
 CORRIDOR 4						5

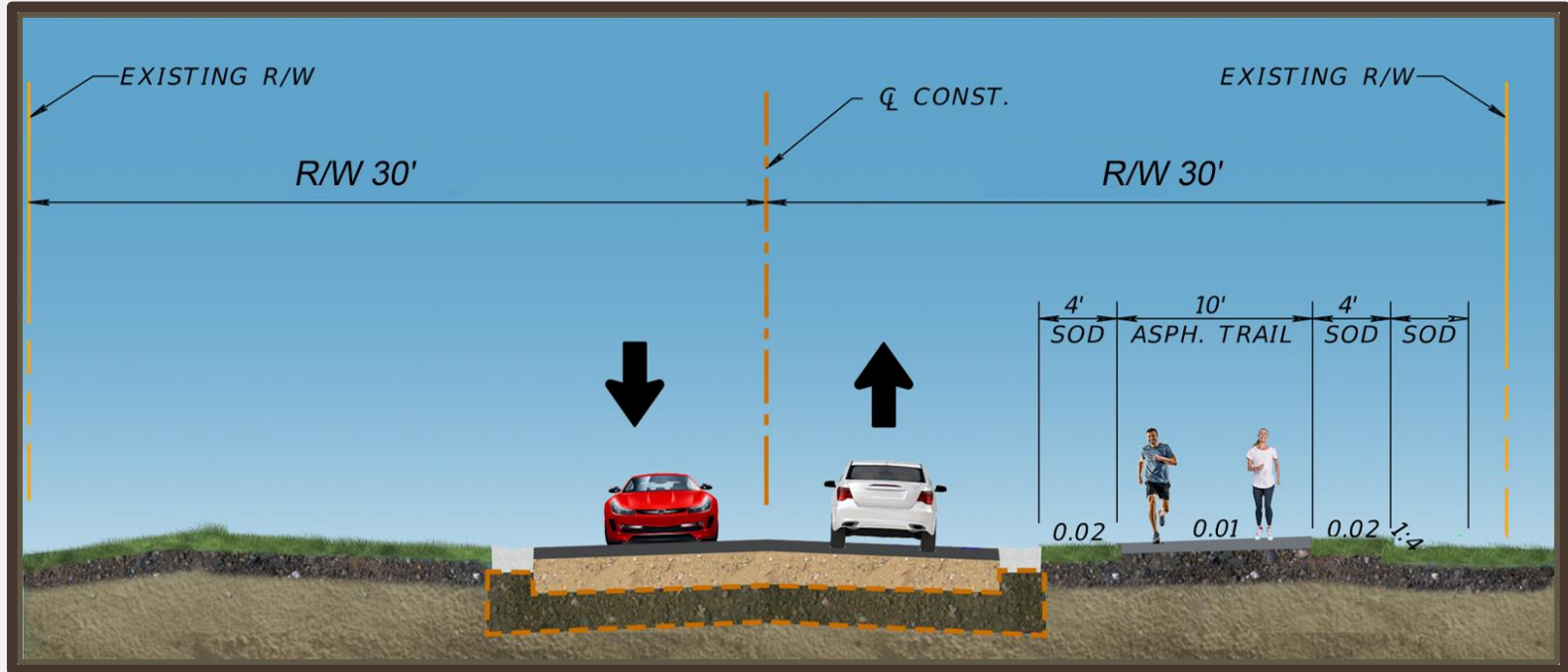
Typical Sections



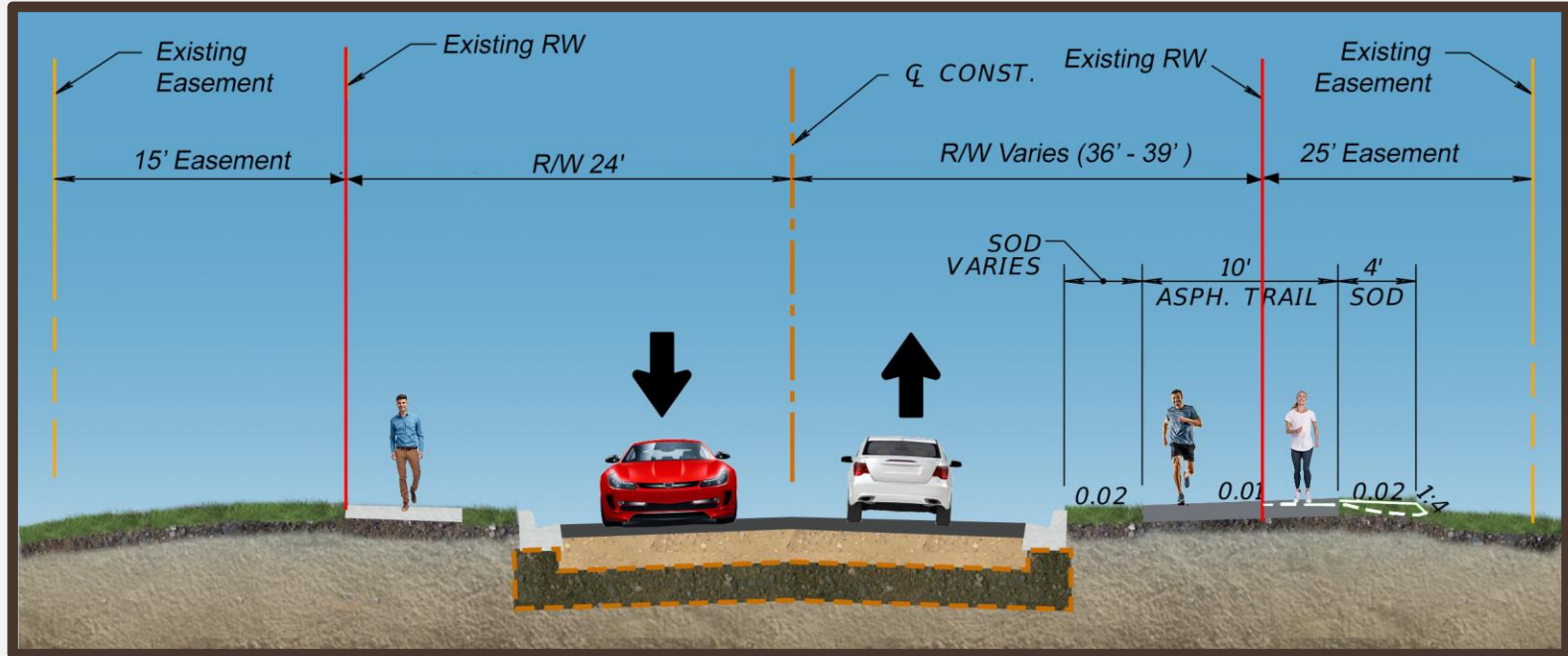
Proposed Typical Section within Powerline Easement



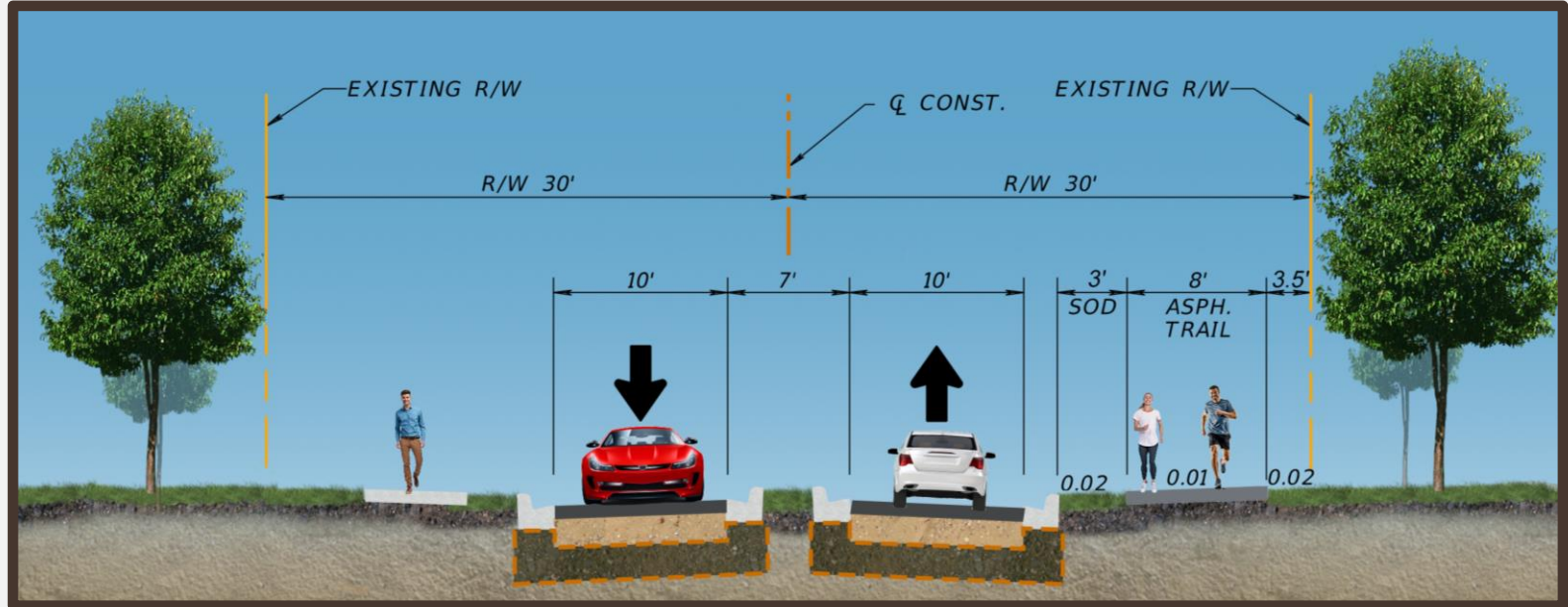
Proposed Typical Section along Wildwood Drive



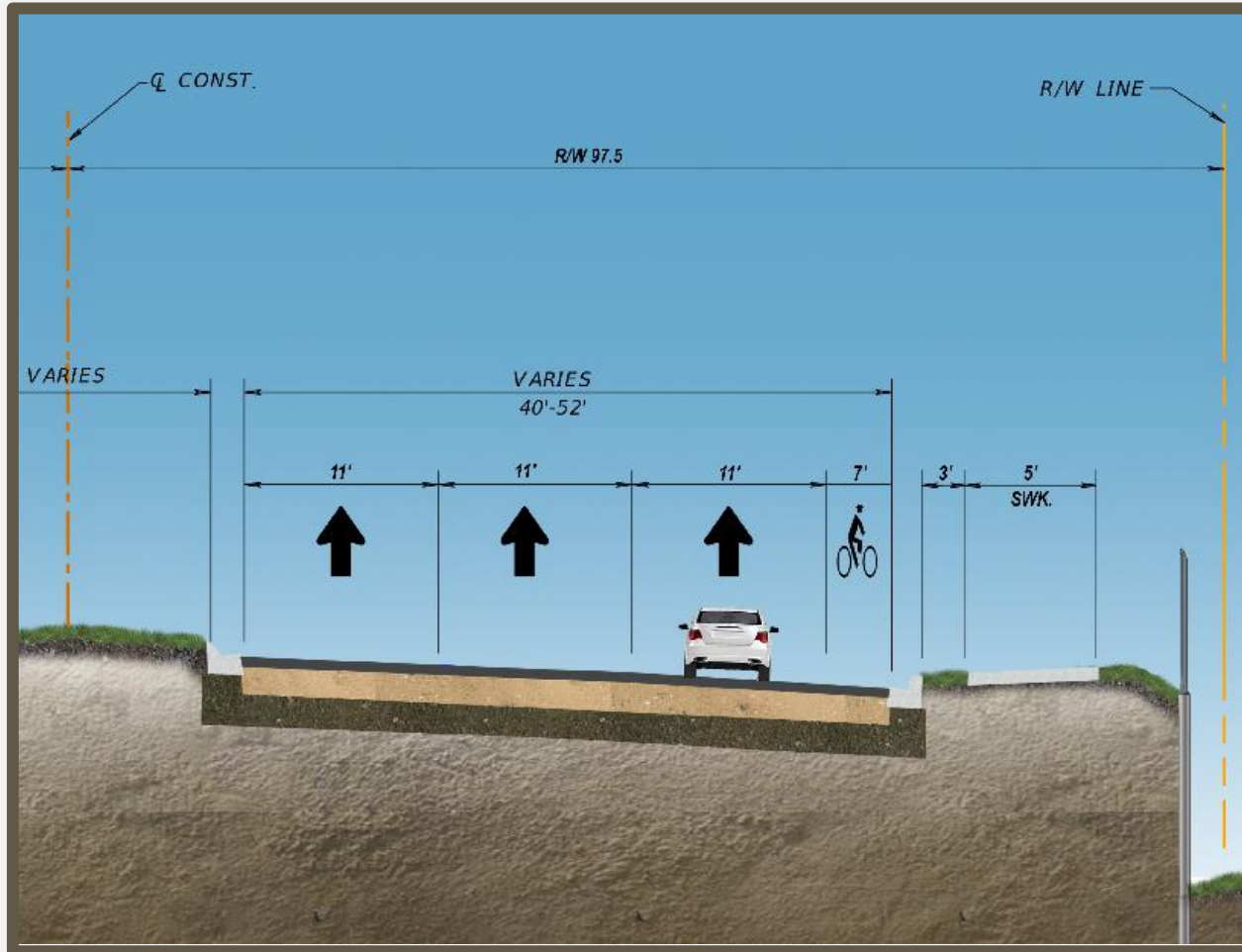
Proposed Typical Section along Seven Oaks Boulevard



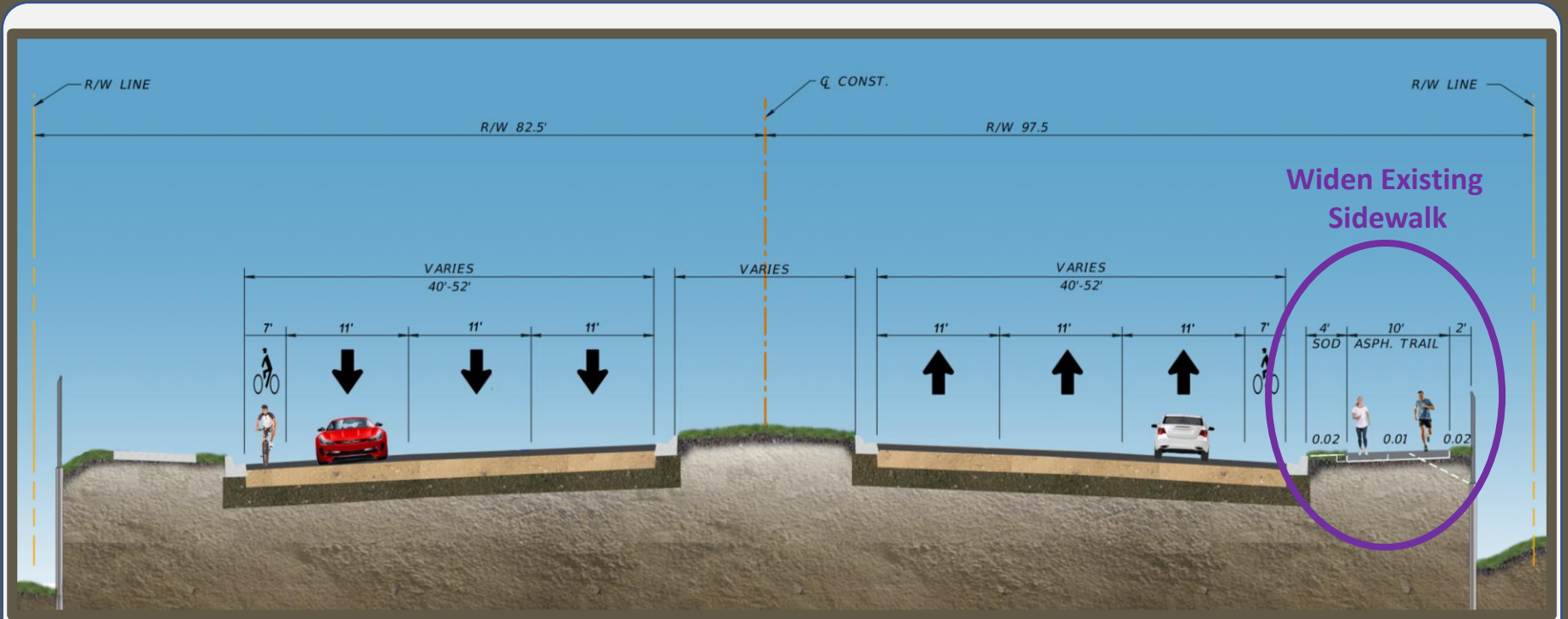
Proposed Typical Section along Shepard Road



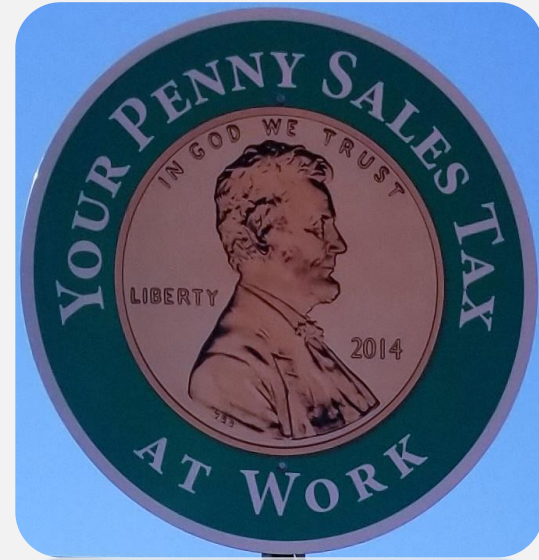
Existing Typical Section along US 17/92 / (SR 15 / 600)



Proposed Typical Section along US 17/92 / (SR 15 / 600)



Alternatives Evaluation

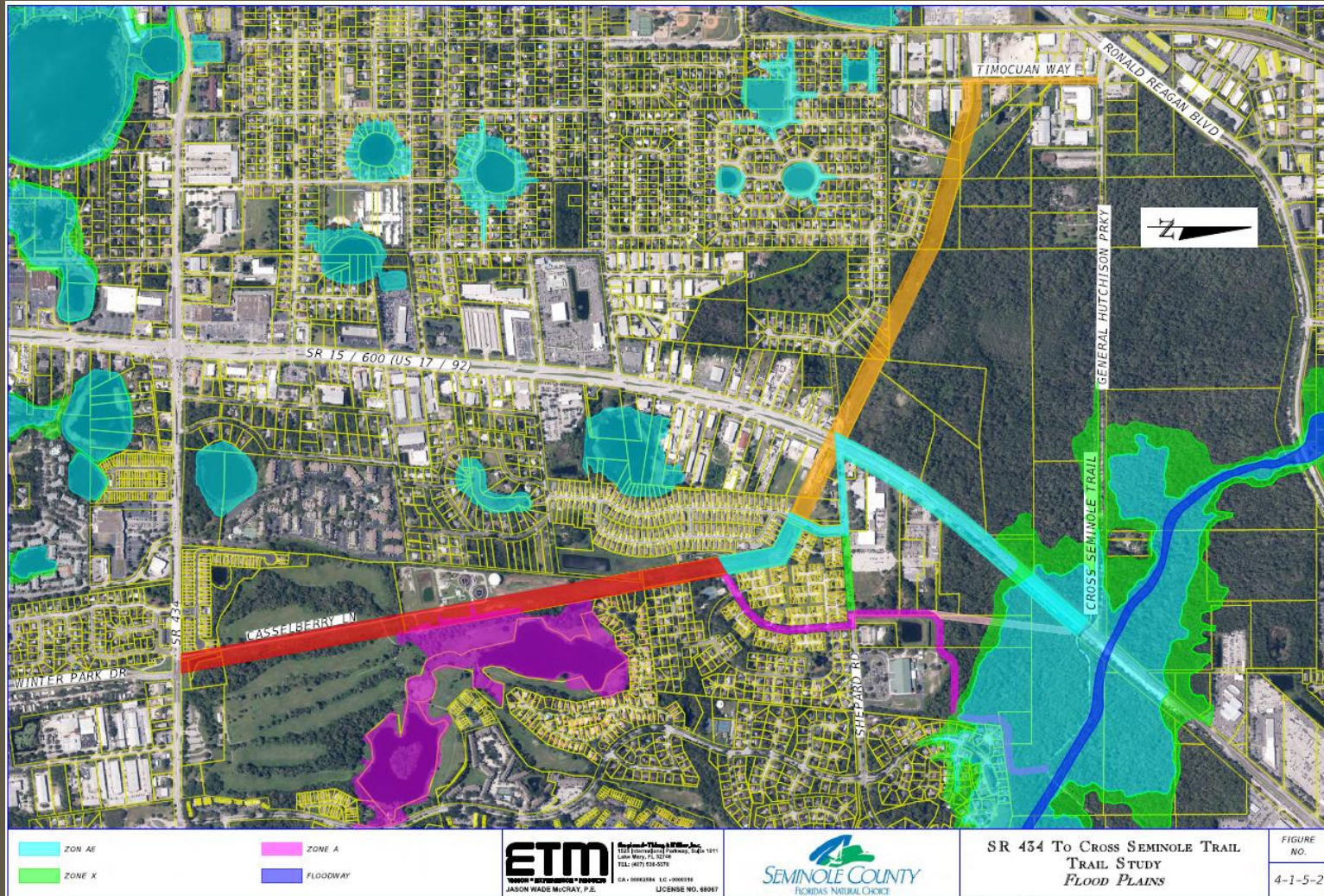


Data Collection Efforts

Data collected as part of the alternative's evaluation tasks

- Right-of-Way Information
- Soil Data
- Wetland Data
- Floodplain Data
- Subdivision Plats
- St. Johns River Water Management District Permit Information
- Field Reconnaissance
- Public Involvement

Floodplain




Public Involvement Efforts

Public Involvement efforts completed for the alternative's evaluation

- Stakeholder Meetings
- Golf Course Property
- Winter Springs
- PPAC
- FDOT Drainage
- SJRWMD
- Virtual Public Meeting Presentation
 - 321 Meeting Notices Mailed
 - Conducted online from June 30th to July 14th
 - Over 40 engagement interactions


PUBLIC WORKS DEPARTMENT
ENGINEERING DIVISION



VIRTUAL PUBLIC MEETING NOTICE
June 30, 2020 to July 14, 2020
On-Demand

Power Corridor Trail Feasibility Study
From SR 434 to Cross Seminole Trail via Shepard Road
CIP No. 02007013

Overview - Seminole County is seeking public input on the Feasibility Study for a Trail from SR 434, at Winter Park Drive, to the Cross Seminole Trail, via the Duke Energy Powerline Corridor and Shepard Road. This trail is identified as a proposed major trail in the Seminole County Trail Master Plan and is intended to provide a north-south connection from the City of Casselberry to the Cross Seminole Trail. In addition, this trail is intended to be part of a larger trail from the City of Casselberry to the City of Lake Mary called the Seminole Central Trail.








Virtual Public Meeting - The purpose of this meeting is to introduce the trail study and present the preliminary concepts to the public. Due to the current Covid-19 related social distance measures enacted at the National, State and County levels, a webpage has been prepared to allow increased online feedback from all stakeholders including residents, trail users, and other interested parties.

Project Website - You can access the public meeting website at www.seminolecountyfl.gov/02007013. Please sign-in so we can acknowledge your participation and interest. Public participation is solicited without regard to race, color, national origin, age, sex, religion, disability or family status.

Contact Us - Should you have any questions prior to the meeting or desire special accommodation under the America Disabilities (ADA) Act, please contact the Seminole County Public Works Engineering Division Project Manager Vasu T. Persaud, PE by email at vpersaud@seminolecountyfl.gov or by phone at (407) 655-5707.

Seminole County Public Works, Engineering Division, 100 East 1st Street, Sanford, Florida 32771

Public Involvement Efforts

No.	Corridors	Description	Aerial	Virtual Public Meeting Feedback		
				Favor	No Comment	Against
1	Red + Magenta	Uses Wildwood Drive and Crosses Soldier Creek		6	23	6
2	Red + Blue + Green + Magenta	Avoids Wildwood Drive and Crosses Soldier Creek		7	27	1
3	Red + Blue	Adjacent to US 17/92		9	24	2
4	Red + Blue + Orange	Crosses US 17/92		4	22	9
5	Red + Blue + Green + Magenta + Yellow	Boardwalk over Soldiers Creek		6	27	2

Evaluation of Alignments

No.	Corridors	Descriptions	Evaluation Criteria					Project Cost
			Pedestrian Crossing of Roadways	Drainage	Right-of-Way	Wetland/Floodplains	Public Acceptance	
1	Red + Magenta	Uses Wildwood Drive and Crosses Soldier Creek	High Benefit/Low Impact	Moderate Benefit/Moderate Impact	High Benefit/Low Impact	Moderate Benefit/Moderate Impact	Low Benefit/High Impact	\$1,857,151 \$2,058,171
2	Red + Blue + Green + Magenta	Avoids Wildwood Drive and Crosses Soldier Creek	High Benefit/Low Impact	Moderate Benefit/Moderate Impact	High Benefit/Low Impact	Moderate Benefit/Moderate Impact	High Benefit/Low Impact	\$1,699,763 \$1,968,545
3	Red + Blue	Adjacent to US 17/92	High Benefit/Low Impact	High Benefit/Low Impact	High Benefit/Low Impact	High Benefit/Low Impact	High Benefit/Low Impact	\$1,360,946
4	Red + Blue + Orange	Crosses US 17/92	Low Benefit/High Impact	Moderate Benefit/Moderate Impact	High Benefit/Low Impact	High Benefit/Low Impact	Low Benefit/High Impact	\$2,923,476
5	Red + Blue + Green + Magenta + Yellow	Boardwalk over Soldiers Creek	High Benefit/Low Impact	High Benefit/Low Impact	High Benefit/Low Impact	Low Benefit/High Impact	Moderate Benefit/Moderate Impact	\$3,978,073 \$6,241,134



High Benefit/
Low Impact



Moderate Benefit/
Moderate Impact

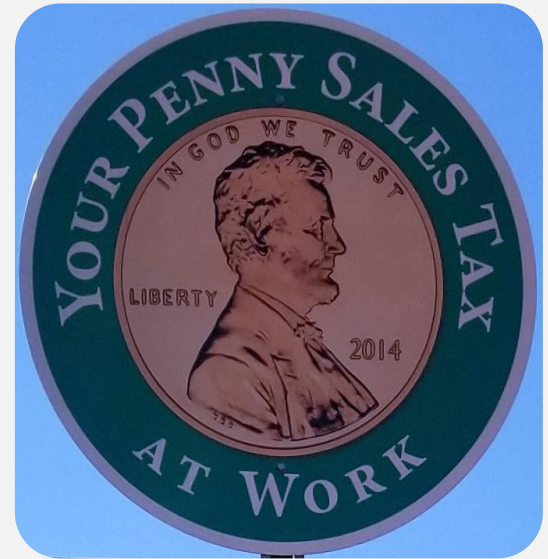


Low Benefit/
High Impact

Qualitative and Quantitative Ranking

No.	Qualitative Analysis						Quantitative Analysis		Averaged Total Individual Score	Overall Rank
	Pedestrian Crossing of Roadway	Drainage Impacts	R/W Impacts	Wetland / Floodplain Impacts	Public Acceptance	Qualitative Ranking	Construction Cost	Quantitative Ranking		
1	1	3	1	3	5	2.60	\$1,857,151	3	2.80	3
2	1	3	1	3	3	2.20	\$1,699,763	2	2.10	2
3	1	1	1	1	1	1.00	\$1,360,946	1	1.00	1
4	5	3	1	1	5	3.00	\$2,923,476	4	3.50	4
5	1	1	1	5	3	2.20	\$3,978,073	5	3.60	5

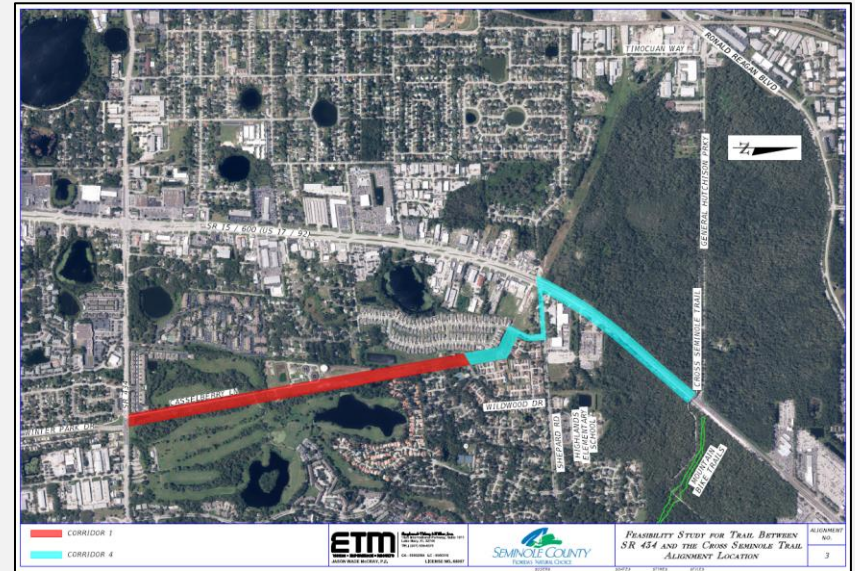
Recommendation



Recommended Alignment

Based on the evaluation of the five alignments, Alignment 3 (adjacent to US 17/92) is the recommended alignment. This recommendation is based on the results of the qualitative and quantitative evaluation that included the following key factors:

- Stakeholder and Public Feedback
- Wetland / Flood Plain Impacts
- Right of Way Acquisition
- Pedestrian Crossings of Roadways
- Overall Cost of Project
- Drainage Impacts / Permitting



**Trail Feasibility Study
between SR 434 and
Cross Seminole Trail**



QUESTIONS?

