

VIRTUAL PUBLIC MEETING NOTICE

June 30, 2020 to July 14, 2020
On-Demand

Power Corridor Trail Feasibility Study

From SR 434 to Cross Seminole Trail via
Shepard Road

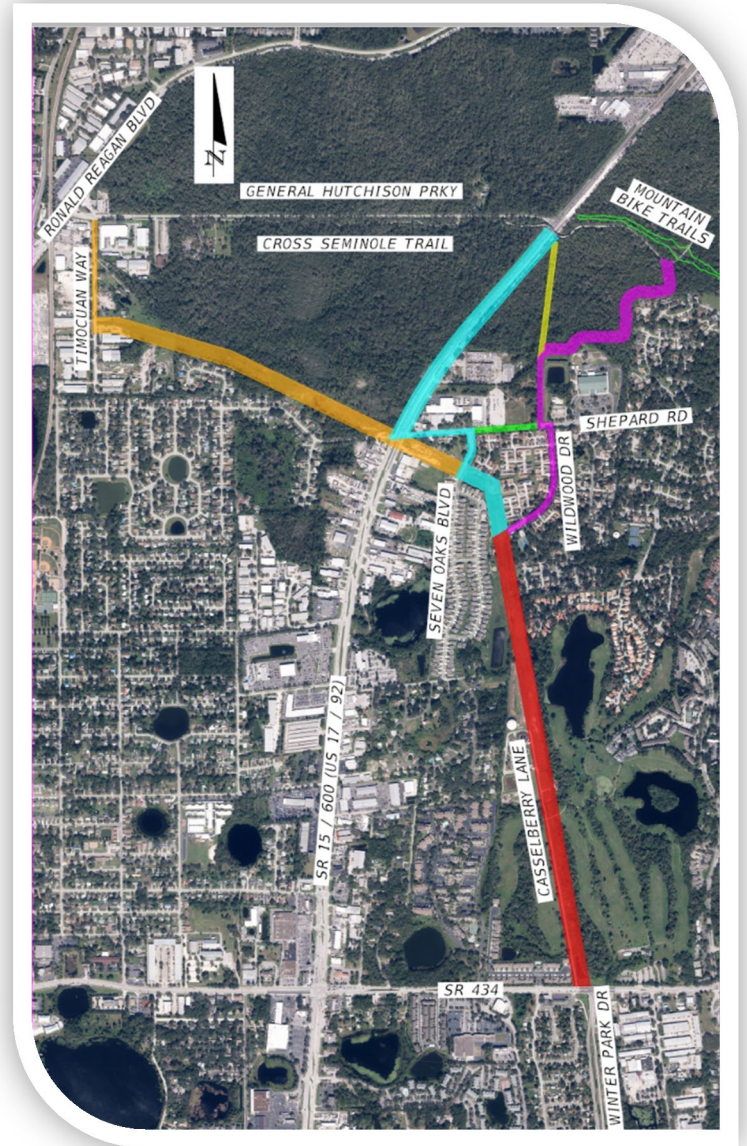
CIP No. 02007013

Overview - Seminole County is seeking public input on the Feasibility Study for a Trail from SR 434, at Winter Park Drive, to the Cross Seminole Trail, via the Duke Energy Powerline Corridor and Shepard Road. This trail is identified as a proposed major trail in the Seminole County Trail Master Plan and is intended to provide a north-south connection from the City of Casselberry to the Cross Seminole Trail. In addition, this trail is intended to be part of a larger trail from the City of Casselberry to the City of Lake Mary called the Seminole Central Trail.

Virtual Public Meeting - The purpose of this meeting is to introduce the trail study and present the preliminary concepts to the public. Due to the current Covid-19 related social distance measures enacted at the National, State and County levels, a webpage has been prepared to allow increased online feedback from all stakeholders including residents, trail users, and other interested parties.

Project Website - You can access the public meeting website at www.seminolecountyfl.gov/02007013. Please sign-in so we can acknowledge your participation and interest. Public participation is solicited without regard to race, color, national origin, age, sex, religion, disability or family status.

Contact Us - Should you have any questions prior to the meeting or desire special accommodation under the America Disabilities (ADA) Act, please contact the Seminole County Public Works Engineering Division Project Manager Vasu T. Persaud, PE by email at vpersaud@seminolecountyfl.gov or by phone at (407) 665-5707.



**Possible alignments under consideration*