

**SEMINOLE COUNTY PARKS & PRESERVATION ADVISORY COMMITTEE
MEETING MINUTES NOVEMBER 18, 2020**

Meeting Attendance:

- **Members Present:** Nancy Dunn, Jason Sutton, Emily Hanna, Mark Brandenburg, Ashlee Woodard, Pasha Baker, Ed Ghiglieri, J. Reid Hilliard,
- **Members Absent:** L.A. Key, Tom Boyko, Bryce Gibson, Jim Buck, Rocky Harrelson
- **Staff Present:** Vasu Persaud, Sherry Williams, Corey Warner, Richard Durr, William Pandos
- **Guests:** Jason McCray, Scott Seck, Kevin Fischer

Call to Order – Mark Brandenburg

Pledge of Allegiance

Welcome/Introductions – Mark Brandenburg

Approval of October 28, 2020 Meeting Minutes – PPAC did not vote on this, as the Zoom meeting was interrupted and we moved forward with the meeting.

Old Business:

- Power Corridor Trail Feasibility Study – From SR434 to Cross Seminole Trail via Shepard Ave
 - Vasu Persaud gave a presentation on the possible trail connectors that would link the trail from SR434 to US17/92.
 - A lengthy discussion ensued going over the pros and cons of each of the trail connectors, this was followed by votes on which of the proposed trails to accept.
 - Jason Sutton made a motion to postpone this vote until we can review this further and get more information from Public Works. Ed Ghiglieri seconded this. This motion passed with 7 out of 8 possible votes. The vote was delayed.
 - Mark Brandenburg made a motion that PPAC submits a letter to the BCC to support the Cross Seminole Trail Connectors, but a specific alignment would not be recommended at this time. This motion was seconded by Jason Sutton. The motion carried with one nay vote.
- Pedestrian and Bike Overpasses – SR436 and SR434
 - Vasu Persaud gave the presentation showing multiple different bridge overpasses that would allow the trail to cross over SR436 and SR434.
 - Following the presentation Mark Brandenburg started taking votes for each of the options, these votes would lead to recommendations.
 - Mark Brandenburg made a motion that as a committee the PPAC recommends to the BCC that at 436 crossing 1A and at 434 alternate 1 be recommended. This motion was seconded by Pasha Baker. The vote passed with one nay vote.
 - .

New Business:

- Trails within Power Corridors – Lake Emma Road to Ronald Reagan Blvd
 - Vasu Persaud gave a presentation on possible trail extensions from Lake Emma Road to Ronald Reagan Boulevard. This presentation served as an introduction to the project for PPAC.
 - After giving the presentation some questions ensued and answers would be coming in the future.

Other Business:

- None

Public Comment

Adjourn – 8:38PM

PERSONS WITH DISABILITIES NEEDING ASSISTANCE TO PARTICIPATE IN ANY OF THESE PROCEEDINGS SHOULD CONTACT THE HUMAN RESOURCES, ADA COORDINATOR 48 HOURS IN ADVANCE OF THE MEETING AT 407-665-7941.

FOR ADDITIONAL INFORMATION REGARDING THIS NOTICE, PLEASE CONTACT THE COUNTY MANAGER'S OFFICE, AT 407-665-7224. PERSONS ARE ADVISED THAT, IF THEY DECIDE TO APPEAL DECISIONS MADE AT THESE MEETINGS / HEARINGS, THEY WILL NEED A RECORD OF THE PROCEEDINGS AND FOR SUCH PURPOSE, THEY MAY NEED TO INSURE THAT A VERBATIM RECORD OF THE PROCEEDINGS IS MADE, WHICH INCLUDES THE TESTIMONY AND EVIDENCE UPON WHICH THE APPEAL IS TO BE BASED, PER SECTION 286.0105, FLORIDA STATUTES.

GARDE SEPARATED CROSSING FEASIBILITY STUDY

**SR 436 at Laurel St
& SR 434 at Orange Ave**

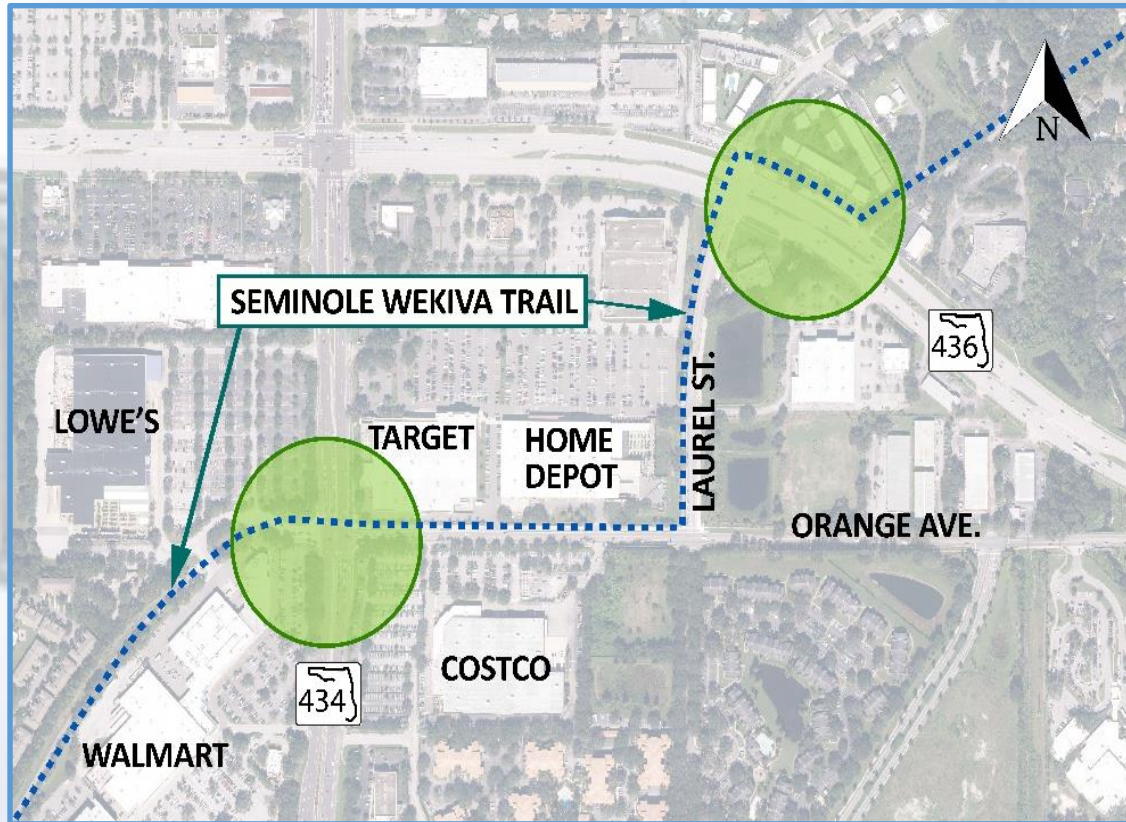
**Final PPAC
Presentation**

November 18, 2020

CIP # 02007015



PROJECT INTRODUCTION



Purpose & Need

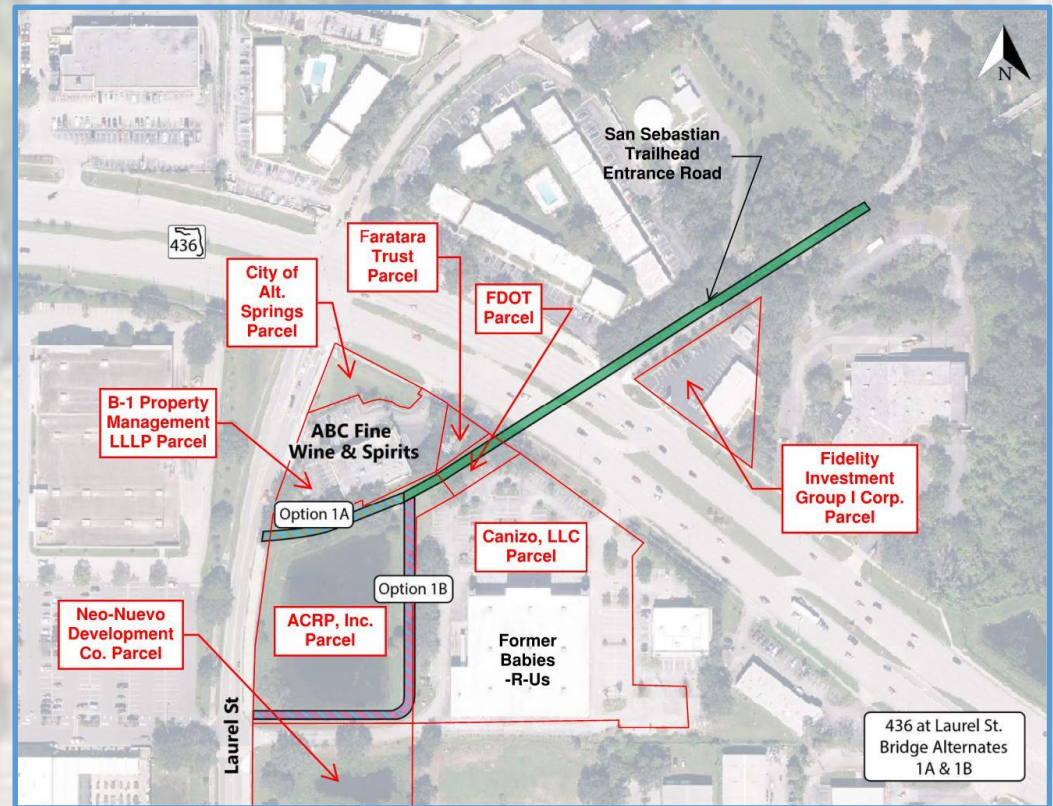
- High level of existing vehicle/pedestrian interactions
- Safety concerns
- Diminished trail user experience
- Discontinuous trail
- PPAC request for grade separation

Study Scope

- Identify Preliminary Alternatives for grade separated crossings
- Inter-Agency Coordination (FDOT, City of Alt. Springs, PPAC)
- Select Final Alternatives for Additional Evaluation/Cost Estimates

Preliminary Alternates – SR 436

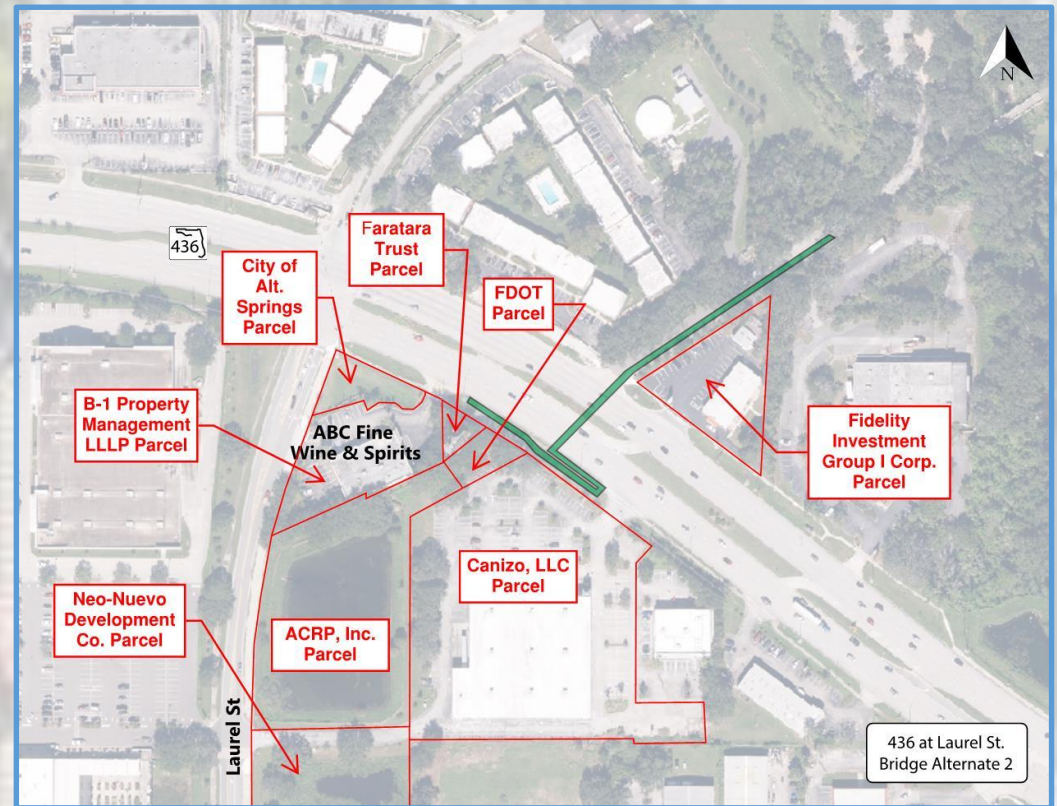
- **Bridge Alternate 1A/1B**
 - Utilize existing R/W along San Sebastian Trailhead Entrance Road
 - Single Span Bridge Across SR 436
 - Two alignment options for connection with Laurel Street
 - Advanced for final alternate evaluation
 - Smooth alignment
 - All agencies viewed alternate favorably
 - 1A preferable to 1B



Preliminary Alternates – SR 436

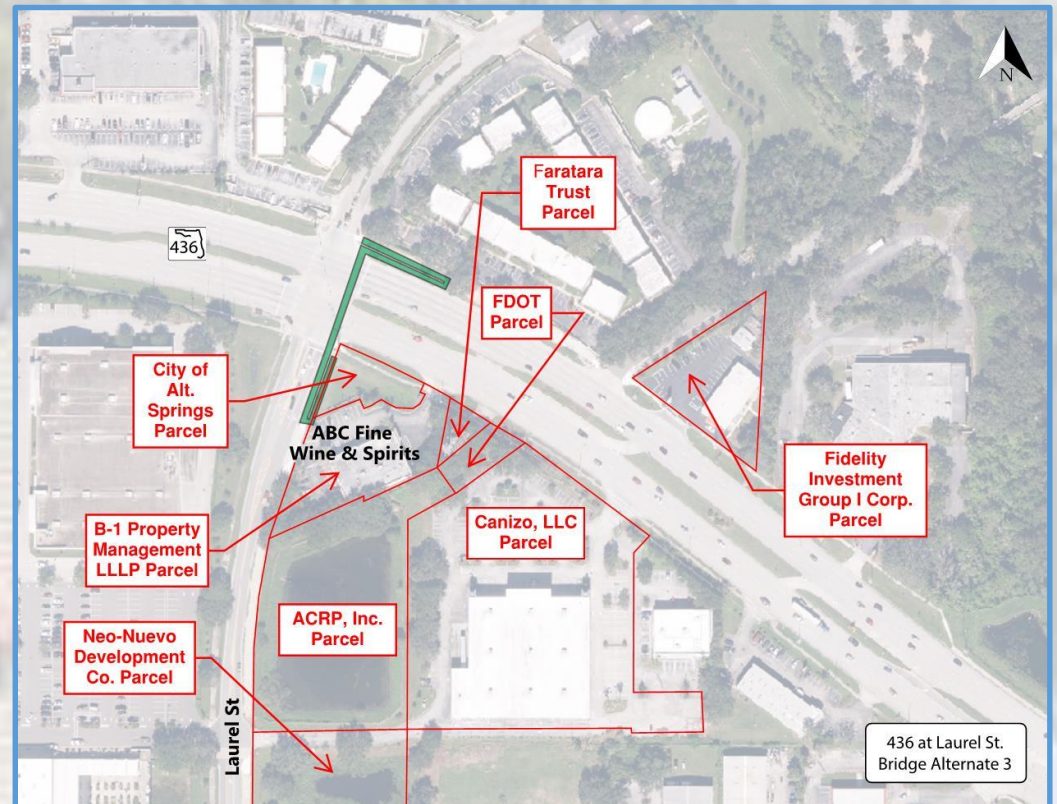
- **Bridge Alternate 2**

- Similar alignment to Bridge Alternate 1A
- Switchback ramp on south side of SR 436
- At-grade trail connection from ramp to Laurel Street
- Advanced for final alternate evaluation
 - Smooth alignment
 - All agencies viewed alternate favorably



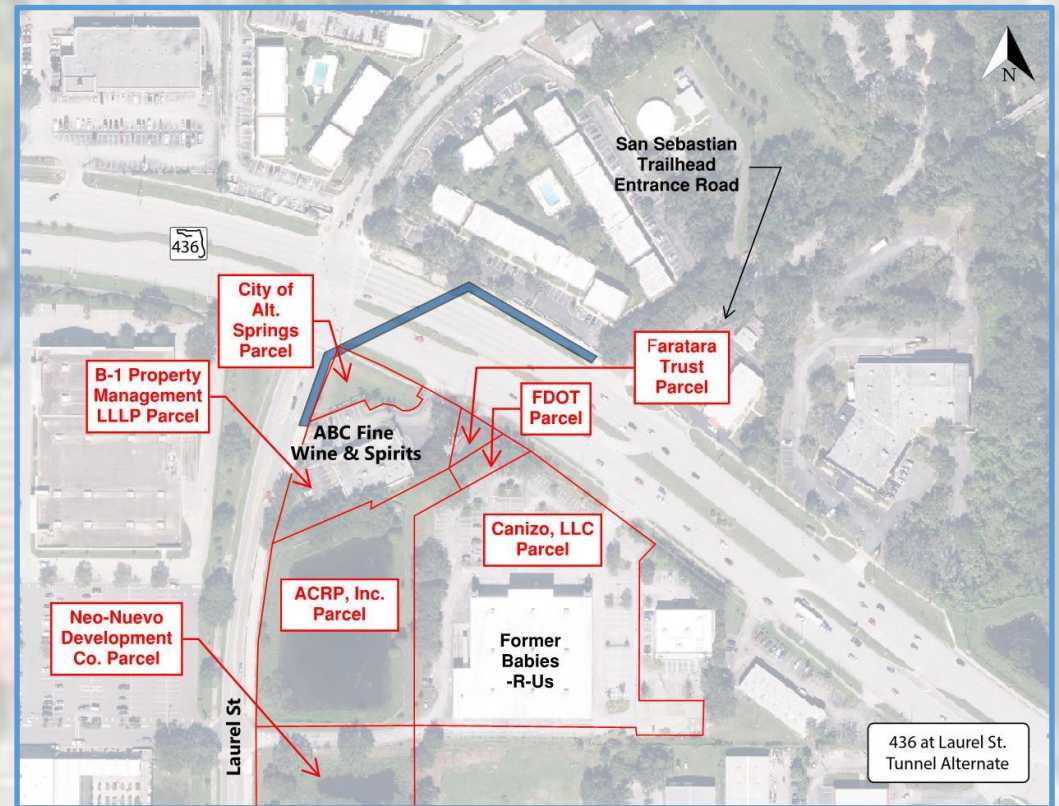
Preliminary Alternates – SR 436

- **Bridge Alternate 3**
 - Single Span Bridge Across SR 436 at Intersection
 - Switchback ramps for both approaches
 - Eliminated from final alternate evaluation
 - SR 436 site line concerns
 - Multiple buried utility conflicts
 - Viewed unfavorably by agencies

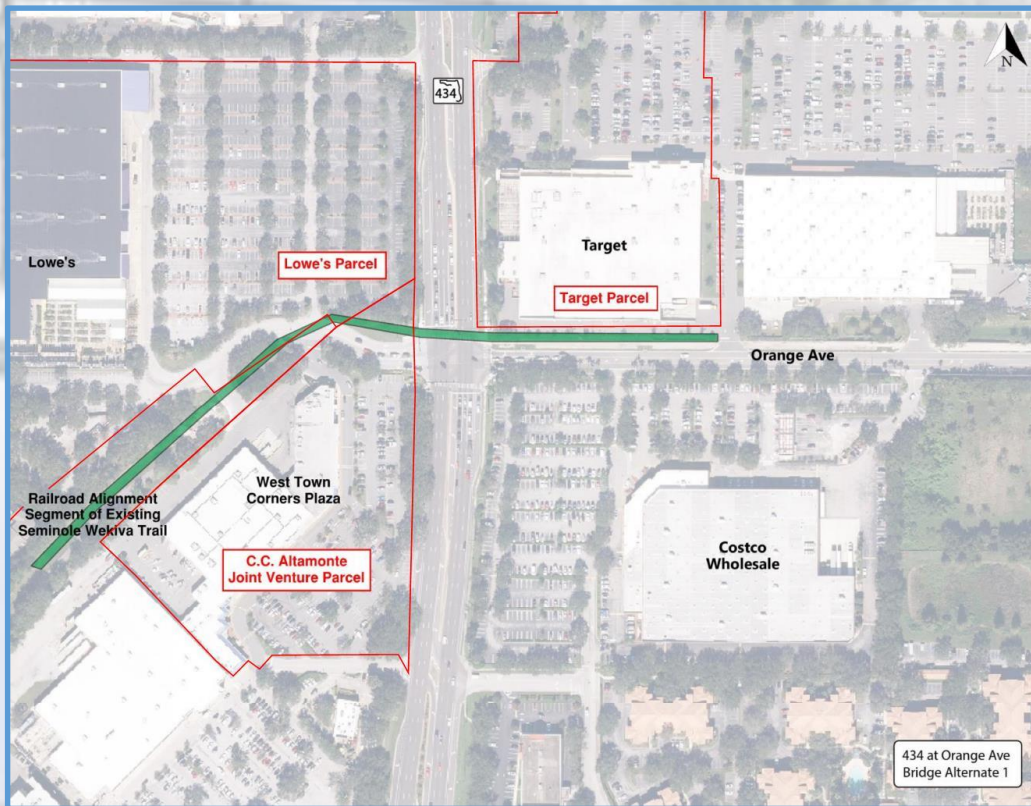


Preliminary Alternates – SR 436

- Tunnel Alternate 4
 - Tunnel crossing diagonally beneath SR 436
 - Approach ramps within existing trail alignment
 - Eliminated from final alternate evaluation
 - High water table will complicate design, construction and long term maintenance
 - Multiple buried utility conflicts
 - Viewed very unfavorably by agencies



Preliminary Alternates – SR 434



- **Bridge Alternate 1**
 - Utilize existing R/W along Orange Avenue and in Railroad Alignment
 - Single Span Bridge Across SR 434
 - Additional bridge spans across plaza driveways and Orange Avenue
 - Advanced for final alternate evaluation
 - Smooth alignment
 - All agencies viewed alternate favorably

Preliminary Alternates – SR 434



- Bridge Alternate 2
 - Similar alignment to Bridge Alternate 1
 - Switchback ramp on west side of SR 434
 - Advanced for final alternate evaluation
 - Smooth alignment
 - All agencies viewed alternate favorably

Preliminary Alternates – SR 434



- Bridge Alternate 3
 - Single Span Bridge Across SR 436 at Intersection
 - Switchback ramps for both approaches
 - Eliminated from final alternate evaluation
 - Multiple utility conflicts with east switchback
 - R/W needs exceed other bridge alternates
 - Viewed unfavorably by agencies

Preliminary Alternates – SR 434



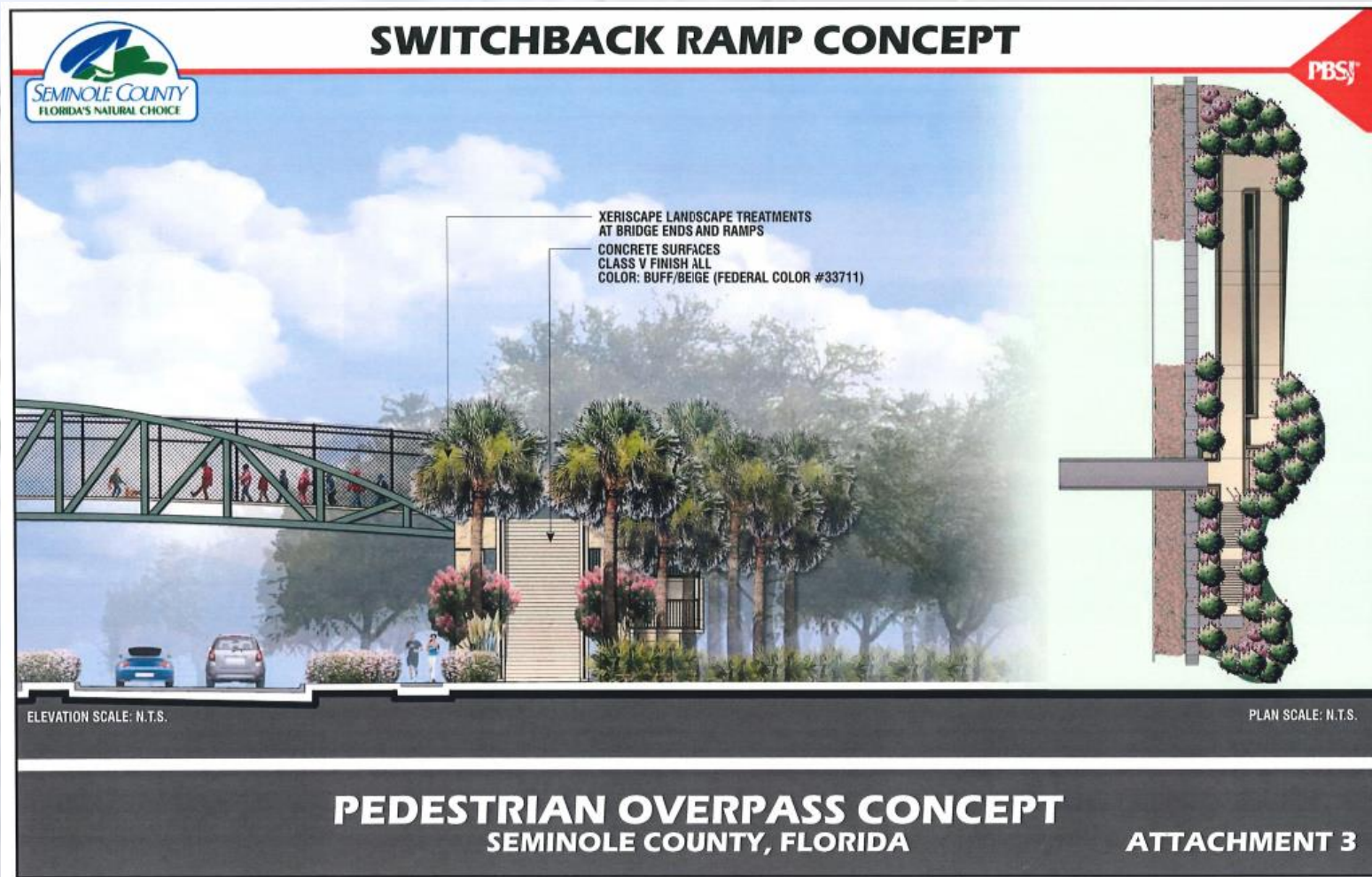
• Tunnel Alternate 4

- Tunnel crossing beneath SR 434 north of intersection
- North/south approach ramps parallel to SR 434
- Eliminated from final alternate evaluation
 - Multiple buried utility conflicts
 - R/W needs exceed other alternates
 - Viewed very unfavorably by agencies

RECOMMENDED ALTERNATE

No.	Type	SR 436	SR 434
1	Bridge Span Structure	Limited ROW/ Permitting	Sight Distance/ Safety
2	Single Switch Back Ramps	Visibility Concerns for Businesses	Utilities/Visibility Concerns
3	Double Switch Back Ramps	Utilities/Limited ROW	Significant Utility Conflicts
4	Tunnel	High Water Table	High Water Table/Utility Conflicts

EXAMPLE CONCEPT



REQUESTED ACTION

- Purpose of the Study
 - Feasibility study to determine viability of grade separated alternatives
- Requested Action
 - PPAC is requested to make an official decision on the grade separated alternative recommendation
- Next steps
 - Study team can document any other input
 - Present to the BCC in 01/2021
 - Finalize study 02/2021

THANK YOU !!

QUESTIONS?

Vasu T. Persaud, PE, AICP, PTOE
Transportation Analyst
Seminole County
Public Works Engineering
Vpersaud@seminolecountyfl.gov
407-665-5707



POWER CORRIDOR TRAIL FEASIBILITY STUDY

SR 434 to Cross
Seminole Trail via
Shepard Road

Final PPAC
Presentation

November 18, 2020

CIP # 02007013



PROJECT INTRODUCTION



- **Limits**

- SR 434 to Cross Seminole Trail via Shepard Road

- **Project Purpose**

- Feasibility study to determine viability of a trail alignment

- **Project Need**

- Provide improved north-south connectivity
 - Part of the planned Seminole Central Trail



ALIGNMENT CONSIDERATIONS

- Fatal Flaws related several alternatives



Residents/Easement Owners Opposed to Orange Alignment

Muck soils and Boardwalk Cost Problematic for Yellow & Pink Alignments

Residents Opposed to Pink Alignment



RECOMMENDED ALIGNMENT

- Qualitative and quantitative evaluation included:
 - Stakeholder and Public Feedback
 - Wetland / Flood Plain Impacts
 - Right of Way Acquisition
 - Pedestrian Crossings of Roadways
 - Overall Cost of Project
 - Drainage Impacts / Permitting
- Alignment 3 - Blue Alignment along US 17/92



REQUESTED ACTION

- Purpose of the Study
 - Feasibility study to determine viability of a trail alignment
- Requested Action
 - PPAC is requested to make an official decision on the **alignment**
- Next steps
 - Study team can document any other input on typical sections, etc.
 - Present to the BCC in 01/2021
 - Finalize study 02/2021



THANK YOU !!

QUESTIONS?

Vasu T. Persaud, PE, AICP, PTOE
Transportation Analyst
Seminole County
Public Works Engineering
Vpersaud@seminolecountyfl.gov
407-665-5707



TRAILS WITHIN POWER CORRIDORS

Lake Emma Road
to Ronald Reagan
Boulevard

PPAC Update
Presentation



November 18, 2020
CIP # 01785317



PROJECT INTRODUCTION



- **Limits**

Lake Emma Road to Ronald Reagan Blvd, via Power Line Corridor

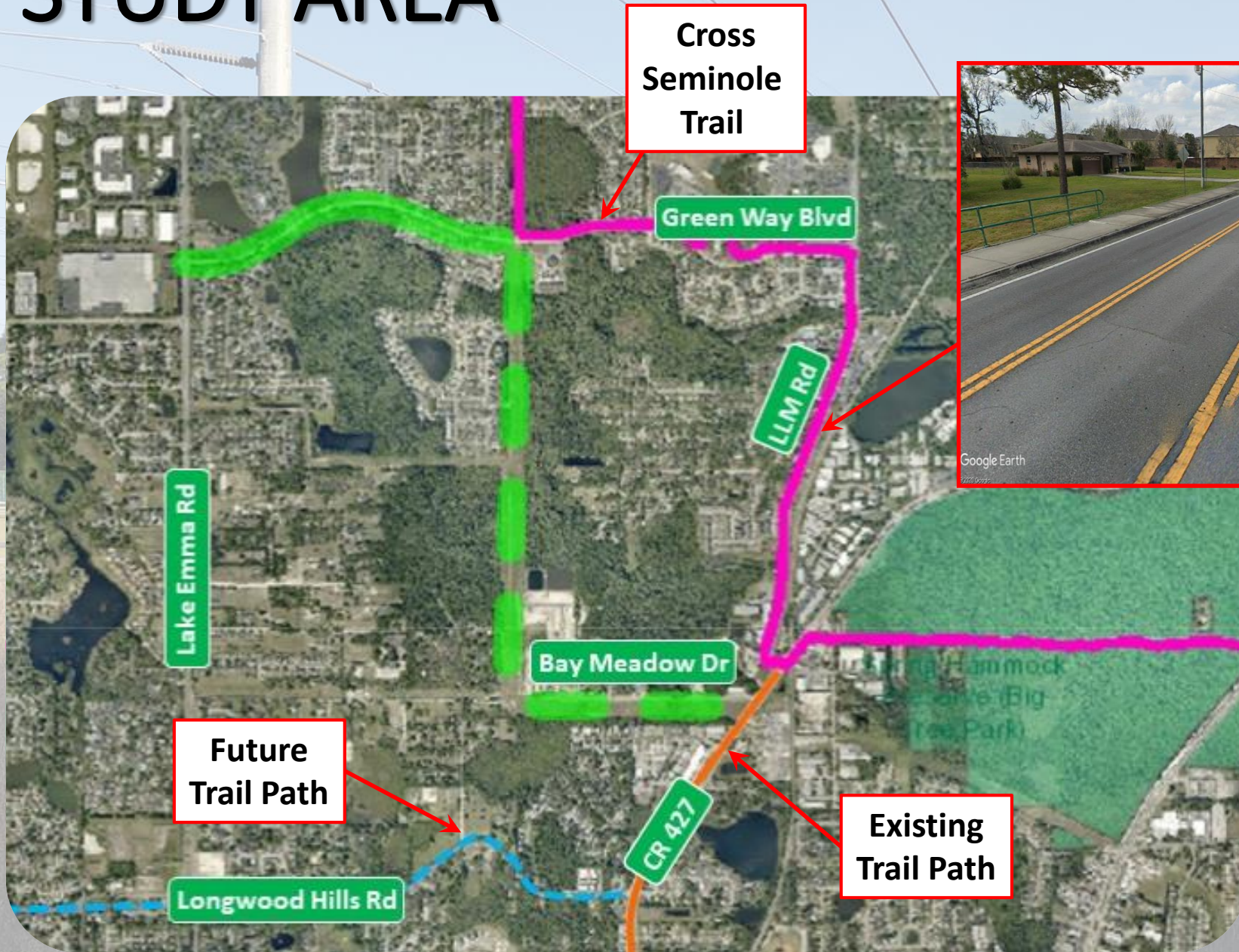
- **Project Purpose**

- Feasibility study to determine viability of a trail alignment

- **Project Need**

- Provide improved north-south connectivity

STUDY AREA



Longwood Lake Mary Rd 6' sidewalk

ALTERNATIVES



- **Green Alignment**

- Utilizes Lake Emma Road, Power Line Corridor and Bay Meadow Drive

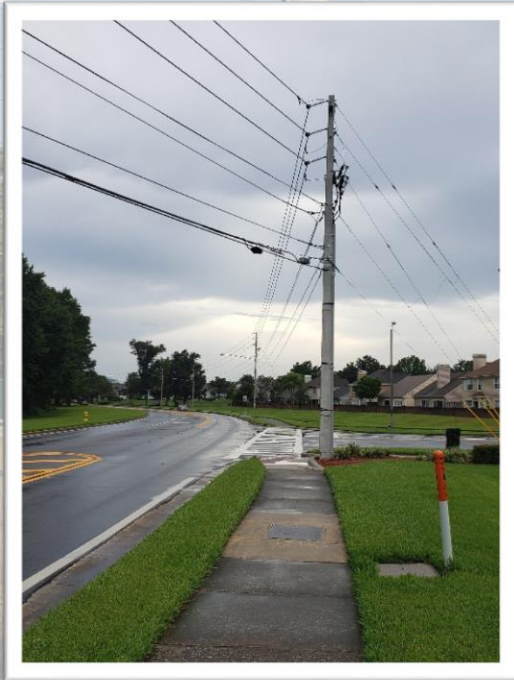
- **Red Alignment**

- Connects to Longwood Lake Mary Road
- Passes thru private property

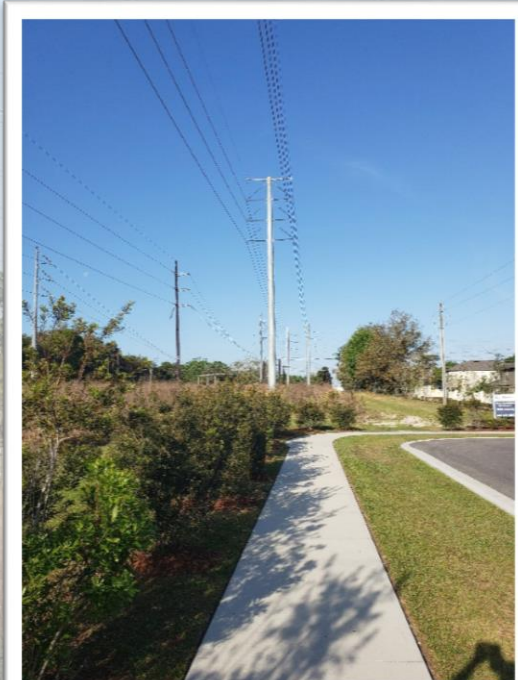
- **Pink Alignment**

- Connects to Longwood Hills Road
- Passes thru a neighborhood

CONSIDERATIONS



Green Way Boulevard
Limited ROW



Bay Meadow Drive
May consider Shared Lane
Markings on Bay Meadow Drive
as limited ROW?



Power Line Corridor
Securing easements from private
property owners



CONSIDERATIONS



Bridge on Ronald Reagan Blvd between Bay Meadow Drive and Longwood Lake Mary Road

Only a narrow 6' sidewalk. Therefore would need to widen bridge to provide sufficient width for a trail



Lazy Acres Lane

Residential Street not conducive to a trail

Schedule

- PPAC Update Presentation - 11/18/2020
- Virtual Public Coordination – 12/10/2020
- PPAC Official Feedback Presentation – 01/2021*
- BCC Update Presentation – 02/2021*
- Finalize Report – 02/2021*

*Tentative



THANK YOU !!

QUESTIONS?

Vasu T. Persaud, PE, AICP, PTOE
Transportation Analyst
Seminole County
Public Works Engineering
Vpersaud@seminolecountyfl.gov
407-665-5707

