

PW-ROWFDOT

\*Project Name= SR 419

FDOT Section #= 7707-5436

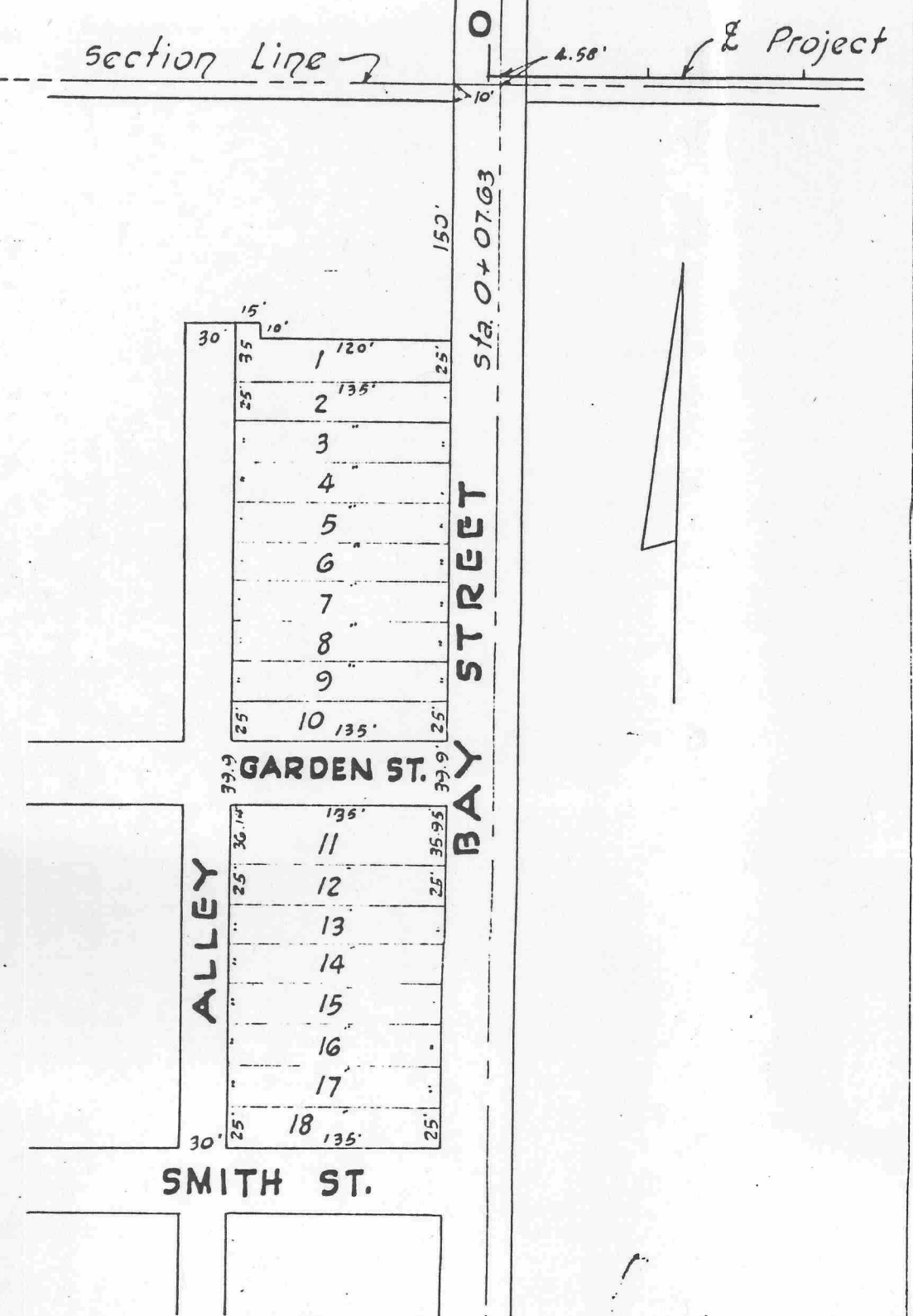
Doc Date= 3/15/1947

Section/Township/Range= 092131

notes=

PW-IndexNum= 84



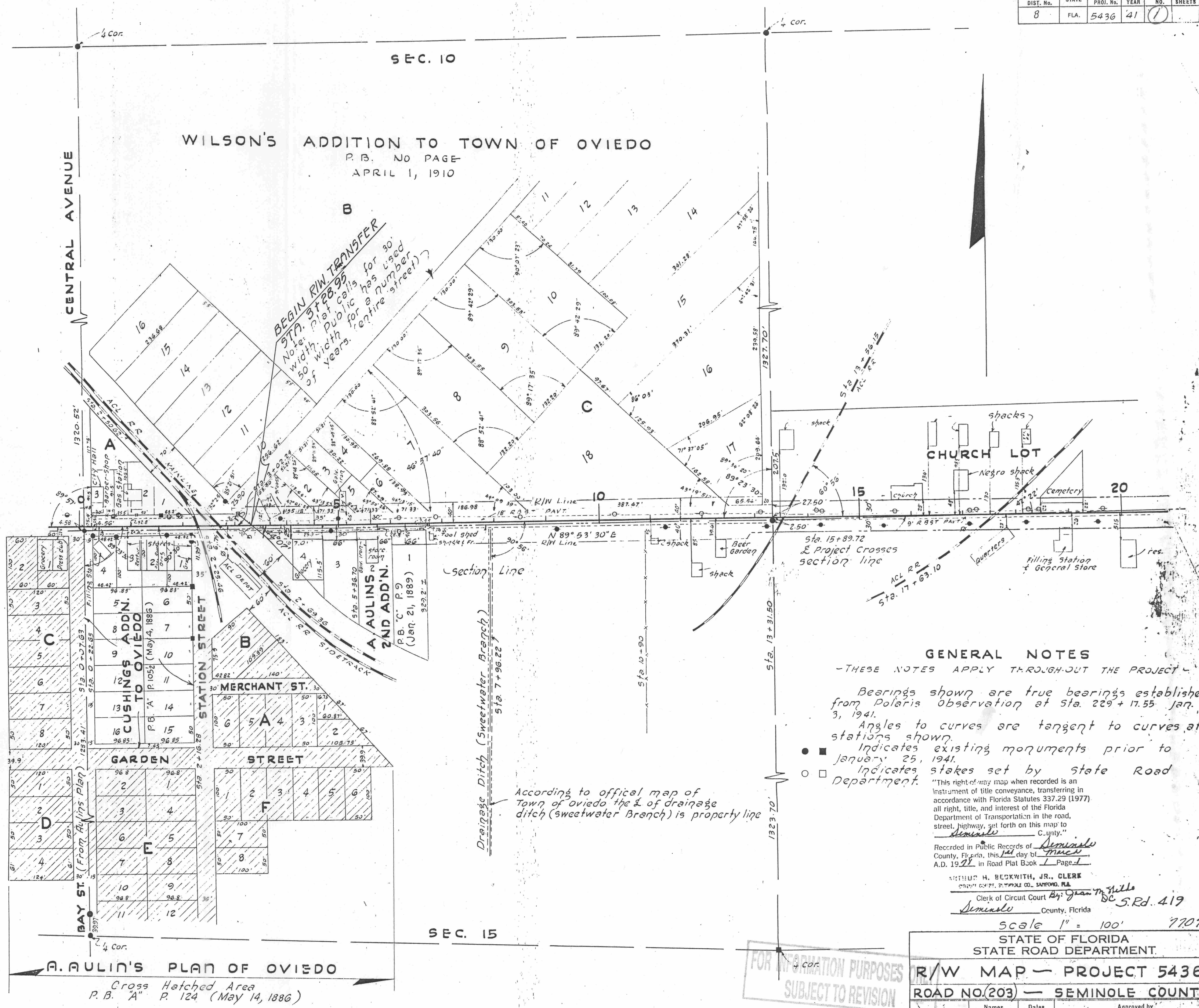


**OVIEDO SCHOOL TRUSTEE'S SUBDIVISION**  
 (Resubdivision of Lots 4, 5, 6, 7, & 8 of Block "C" and Block "D" of A. AULIN'S PLAN OF OVIEDO.)  
 P.B. 2 P. 51 (April 13, 1914)

For Resubdivision of Lots No. 4, 5, 6, 7, & 8 of BLOCK "C" and Resubdivision of BLOCK "D" of AULIN'S PLAN OF OVIEDO See Insert.

No Scale

Approved 3/16/44  
*[Signature]*  
 State Highway Engineer.



**WILSON'S ADDITION TO TOWN OF OVIEDO**  
 P. B. NO PAGE  
 APRIL 1, 1910

**A. AULIN'S PLAN OF OVIEDO**  
 Cross Hatched Area  
 P. B. "A" P. 124 (May 14, 1886)

**GENERAL NOTES**  
 -THESE NOTES APPLY THROUGH-OUT THE PROJECT-

Bearings shown are true bearings established from Polaris observation at Sta. 229 + 17.55 Jan. 3, 1941.  
 Angles to curves are tangent to curves at stations shown.  
 • ■ Indicates existing monuments prior to January 25, 1941.  
 ○ □ Indicates stakes set by State Road Department.

According to official map of Town of Oviedo the L of drainage ditch (Sweetwater Branch) is property line

Recorded in Public Records of Seminole County, Fla. on this 1st day of March A.D. 1941 in Road Plat Book 1 Page 1

RENE H. BECKWITH, JR., CLERK  
 Clerk of Circuit Court By *[Signature]* S.R. 419  
 Seminole County, Florida

Scale 1" = 100' 7707

STATE OF FLORIDA  
 STATE ROAD DEPARTMENT.

FOR INFORMATION PURPOSES  
 SUBJECT TO REVISION

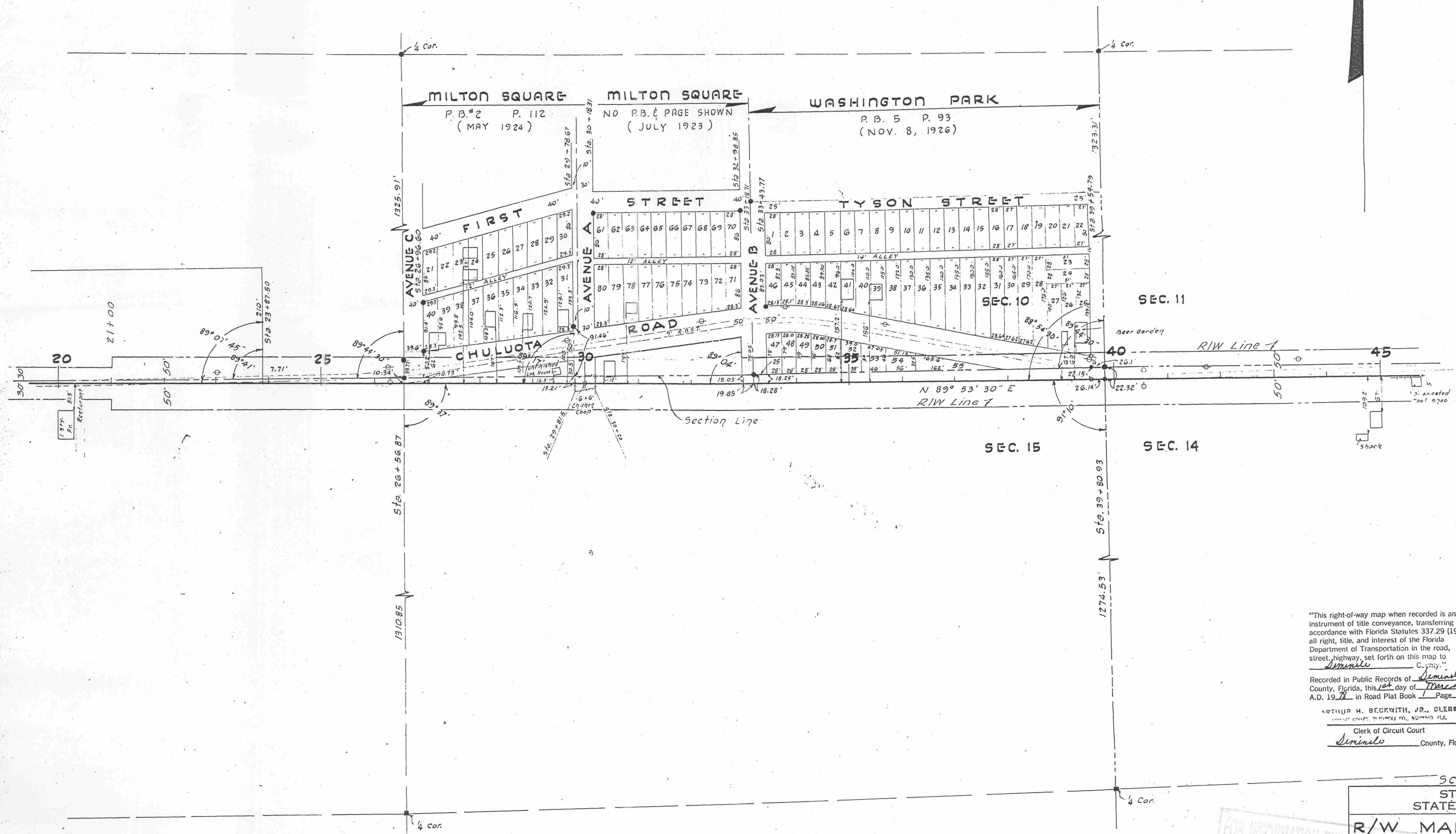
R/W MAP - PROJECT 5436  
 ROAD NO. (203) - SEMINOLE COUNTY

Designed	Names	Dates	Approved by
Drawn	W.M.C.	5/3/41	<i>[Signature]</i>
Traced			
Checked			
Revised			

MAR 05 1997

TWP. 21 S R 31 E





"This right-of-way map when recorded is an instrument of title conveyance, transferring in accordance with Florida Statutes 337.29 (1977) all right, title, and interest of the Florida Department of Transportation in the road, street, highway, set forth on this map to Seminole."
   
Recorded in Public Records of Seminole
  
County, Florida, this 14th day of March
  
A.D. 1997 in Road Plat Book 1 Page 2

ARTHUR H. BECKWITH, JR., CLERK
   
Clerk of Circuit Court
   
Seminole County, Florida
   
By: Juan M. Hilde D.C.

S. Rd. 419

Scale 1" = 100' 7707

STATE OF FLORIDA
   
STATE ROAD DEPARTMENT
   
R/W MAP - PROJECT 5436
   
ROAD NO. (203) - SEMINOLE COUNTY

	Names	Dates	Approved by
Designed			
Drawn			
Checked	W.M.C.	5/5/97	<i>[Signature]</i>
Revised			

FOR INFORMATION PURPOSES  
SUBJECT TO REVIEW

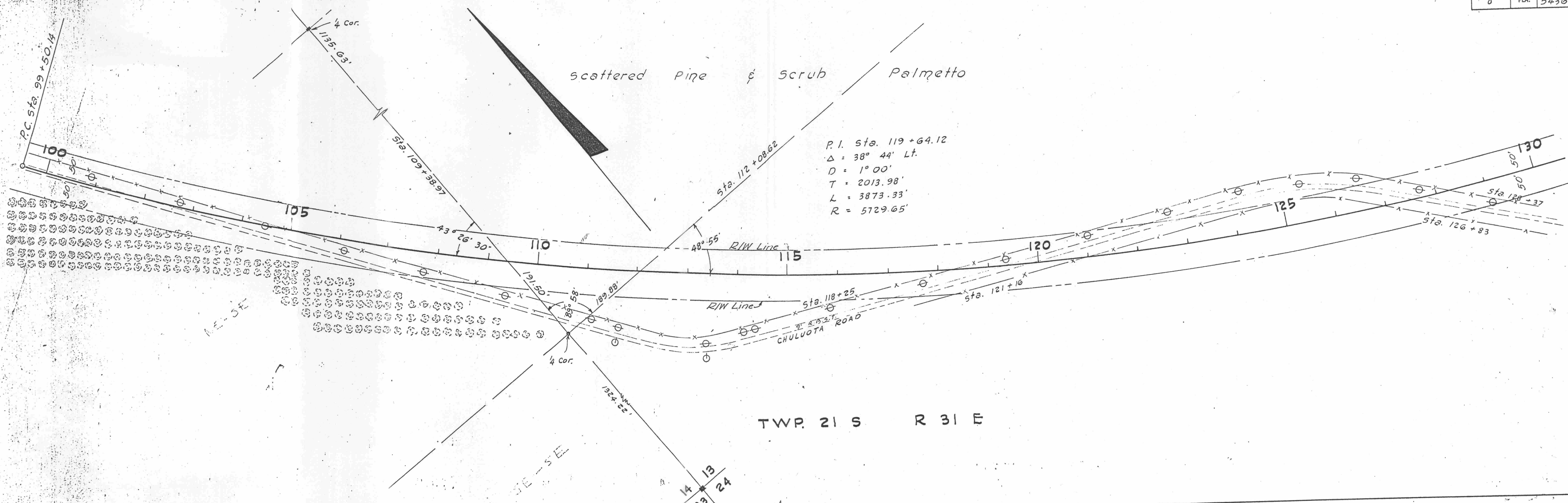
MAR 05 1997

TWP. 21 S R 31 E

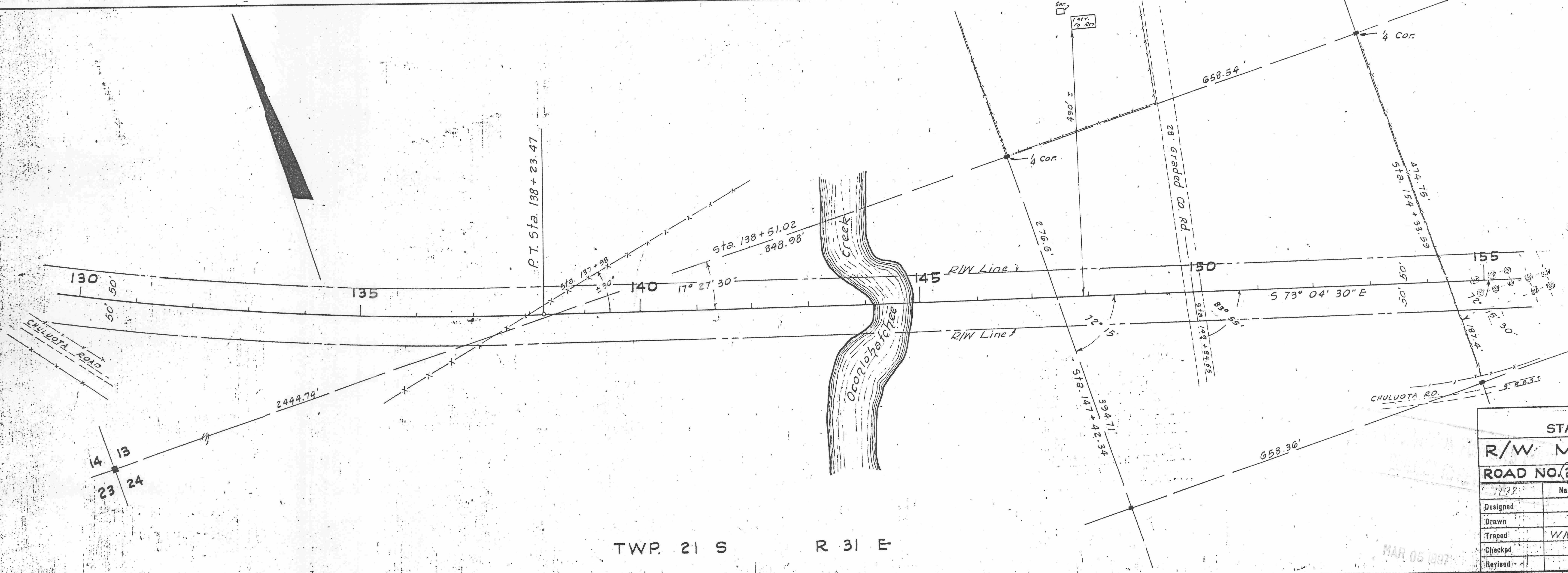








TWP. 21 S R 31 E



TWP. 21 S R 31 E

"This right-of-way map when recorded is an instrument of title conveyance, transferring in accordance with Florida Statutes 337.29 (1977) all right, title, and interest of the Florida Department of Transportation in the road, street, highway, set forth on this map to Seminole County."

Recorded in Public Records of Seminole County, Florida, this 1st day of March, A.D. 1978 in Road Plat Book Page 4

ARTHUR H. BECKWITH, JR., CLERK  
Circuit Court, SEMINOLE CO., SEMINOLE, FLA.  
Clerk of Circuit Court

NOTE: R/W Approved From Sta. 95+25.13 to Sta. 400+00

S.R. N° 419  
Scale 1" = 100' 7107

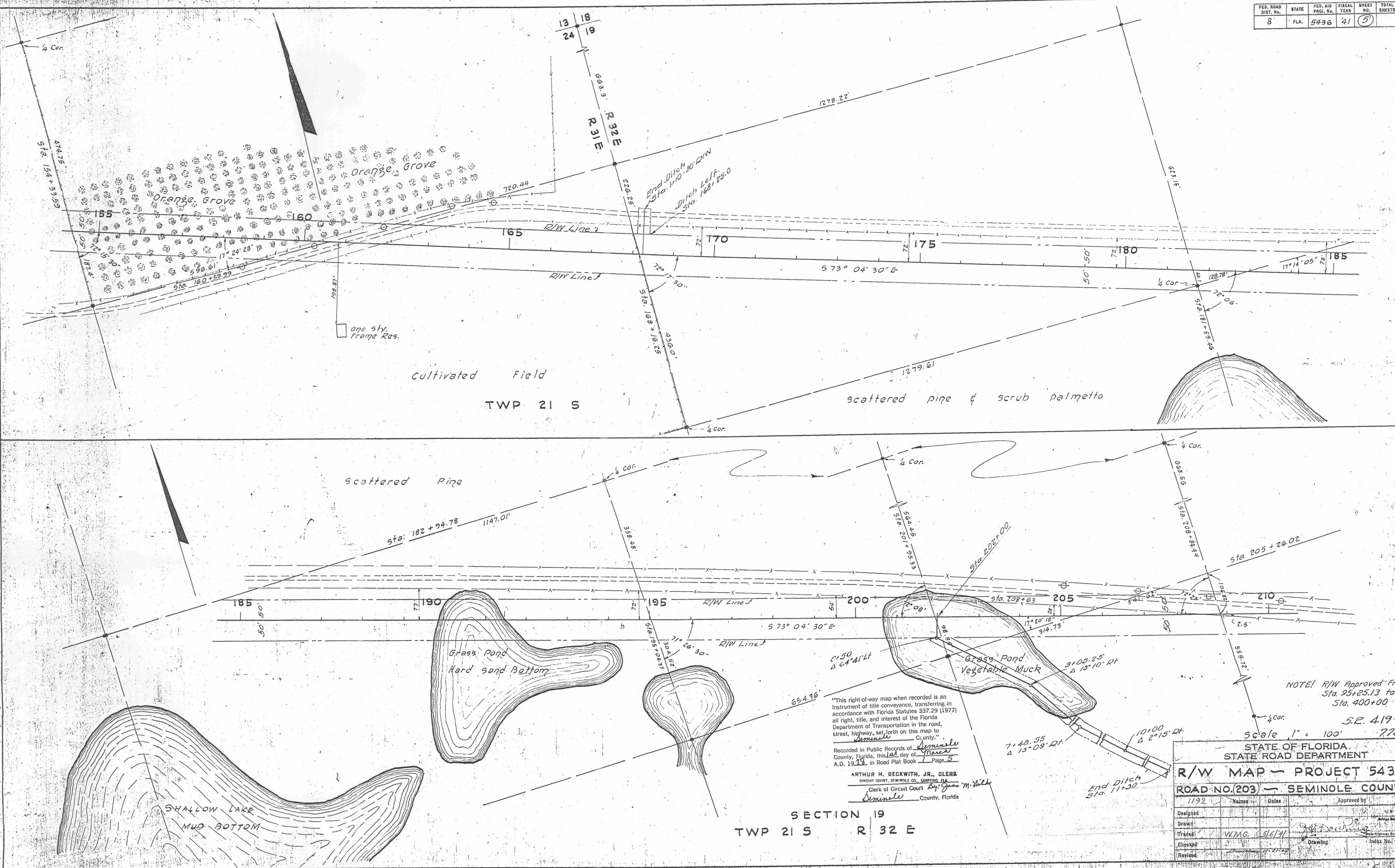
STATE OF FLORIDA  
STATE ROAD DEPARTMENT

R/W MAP - PROJECT 5436  
ROAD NO. (203) - SEMINOLE COUNTY

No.	Name	Date	Approved by
1	Designed		
2	Drawn		
3	Traced	W.M.C. 5/6/41	
4	Checked		
5	Revised		

MAR 05 1978





"This right-of-way map when recorded is an instrument of title conveyance, transferring in accordance with Florida Statutes 337.29 (1977) all right, title, and interest of the Florida Department of Transportation in the road, street, highway, set forth on this map to Seminole County, Florida."

Recorded in Public Records of Seminole County, Florida, this 1st day of March A.D. 1978 in Road Plat Book 1 Page 5

ARTHUR H. BECKWITH, JR., CLERK  
 CIRCUIT COURT, SEMINOLE CO., FLORIDA  
 Clerk of Circuit Court By: Joan M. Hill  
Seminole County, Florida

NOTE: R/W Approved From Sta. 25+25.13 to Sta. 400+00  
 S.R. 419  
 Scale 1" = 100' 7707

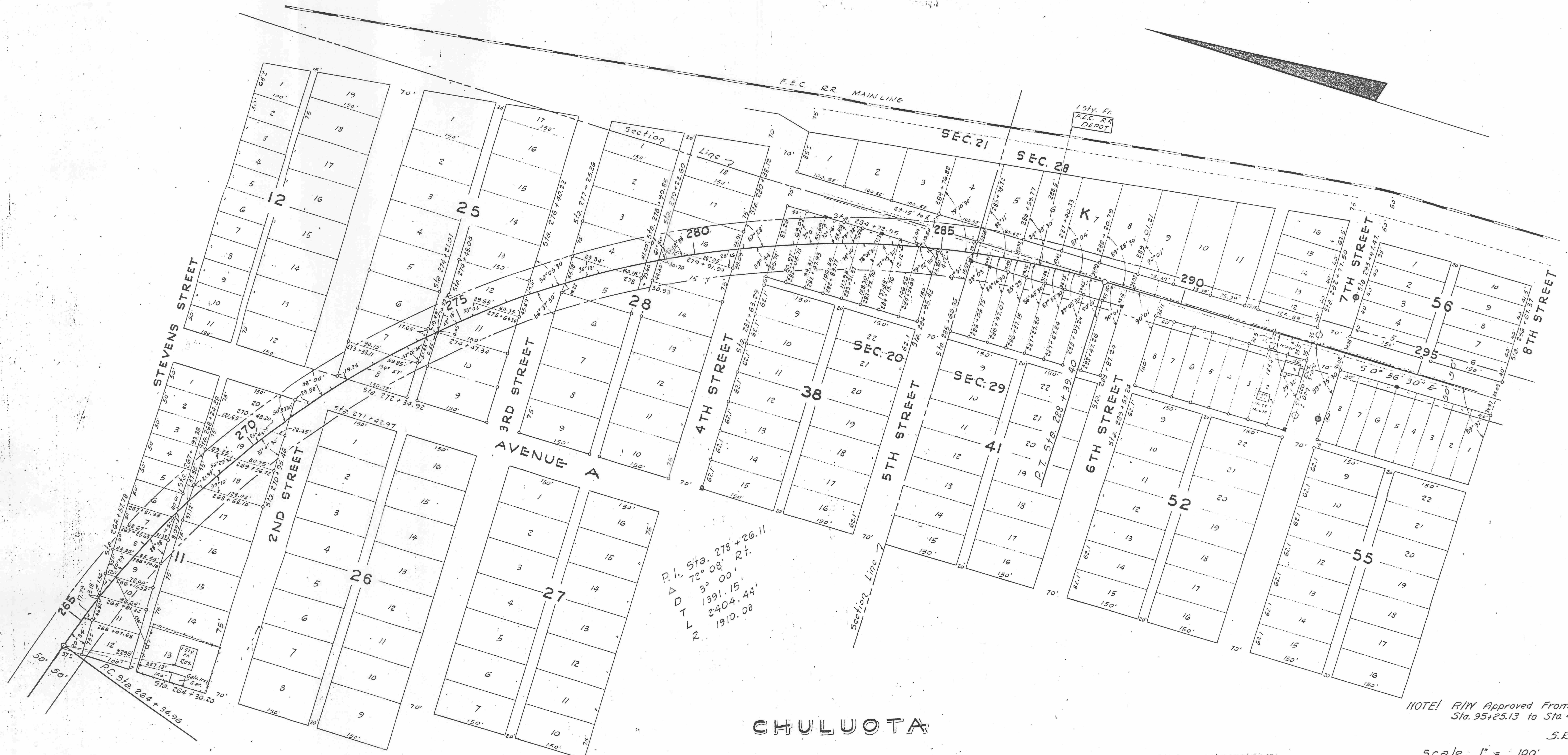
SECTION 19  
 TWP 21 S R 32 E

STATE OF FLORIDA STATE ROAD DEPARTMENT				
R/W MAP - PROJECT 5436				
ROAD NO. (203) - SEMINOLE COUNTY				
1192	Name	Dates	Approved by	
Designed				
Drawn				
Traced	W.M.G.	5/6/41		
Checked				
Revised				









CHULUOTA

TWP 21 S R 32 E

NOTE! R/W Approved From Sta. 95+25.13 to Sta 400+00  
S.R.D. 419  
Scale 1" = 100' 1107

"This right-of-way map when recorded is an instrument of title conveyance, transferring in accordance with Florida Statutes 337.29 (1977) all right, title, and interest of the Florida Department of Transportation in the road, street, highway, set forth on this map to Seminoles County, Florida."

Recorded in Public Records of Seminoles County, Florida, this 1st day of March, A.D. 1978, in Road Plat Book Page 7

Clerk of Circuit Court  
Seminoles County, Florida

STATE OF FLORIDA  
STATE ROAD DEPARTMENT

R/W MAP - PROJECT-5436  
ROAD NO. (203) - SEMINOLE COUNTY

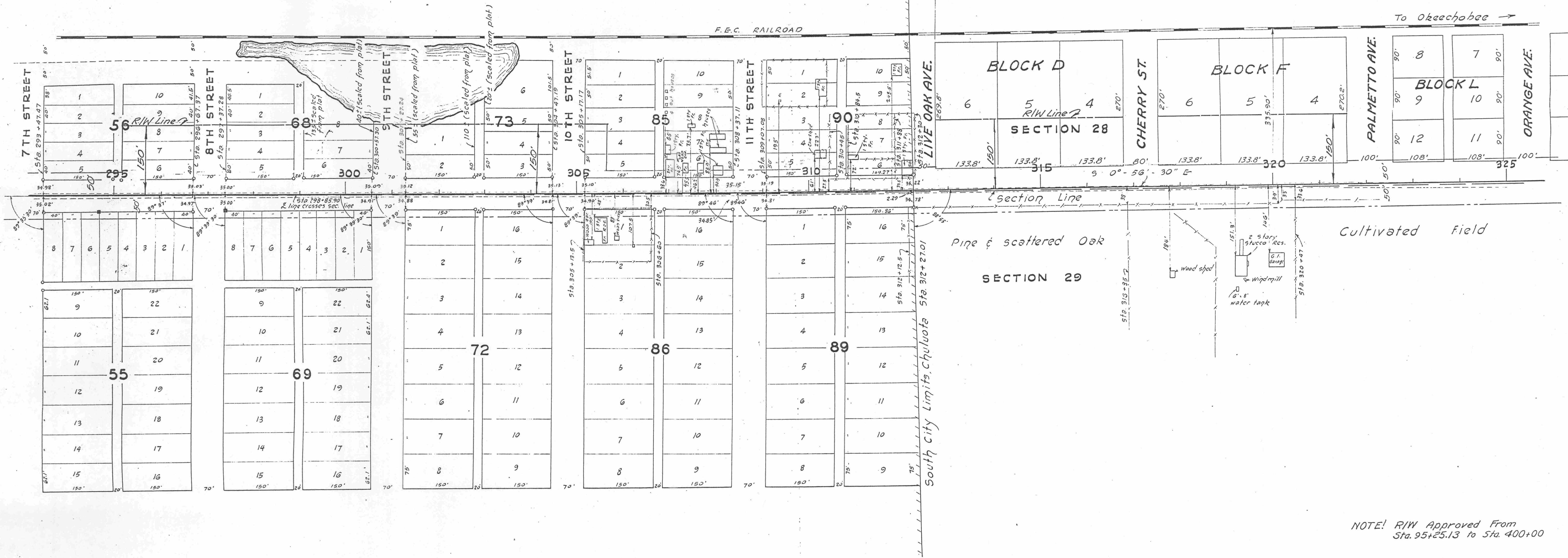
Names	Dates	Approved by
Designed		
Drawn		
Traced	W/MG 5/7/41	
Checked		
Revised		

INFORMATION PURPOSES ONLY  
SUBJECT TO REVISION

MAR 05 1978



CHULUOTA SUB. PB 2 PAGE 31



TWP 21 S R 32 E

NOTE: R/W Approved From Sta. 95+25.13 to Sta. 400+00

S.R. 419  
Scale 1" = 100' 7707

"This right-of-way map when recorded is an instrument of title conveyance, transferring in accordance with Florida Statutes 337.29 (1977) all right, title, and interest of the Florida Department of Transportation in the road, street, highway, set forth on this map to Seminoles County, Florida."

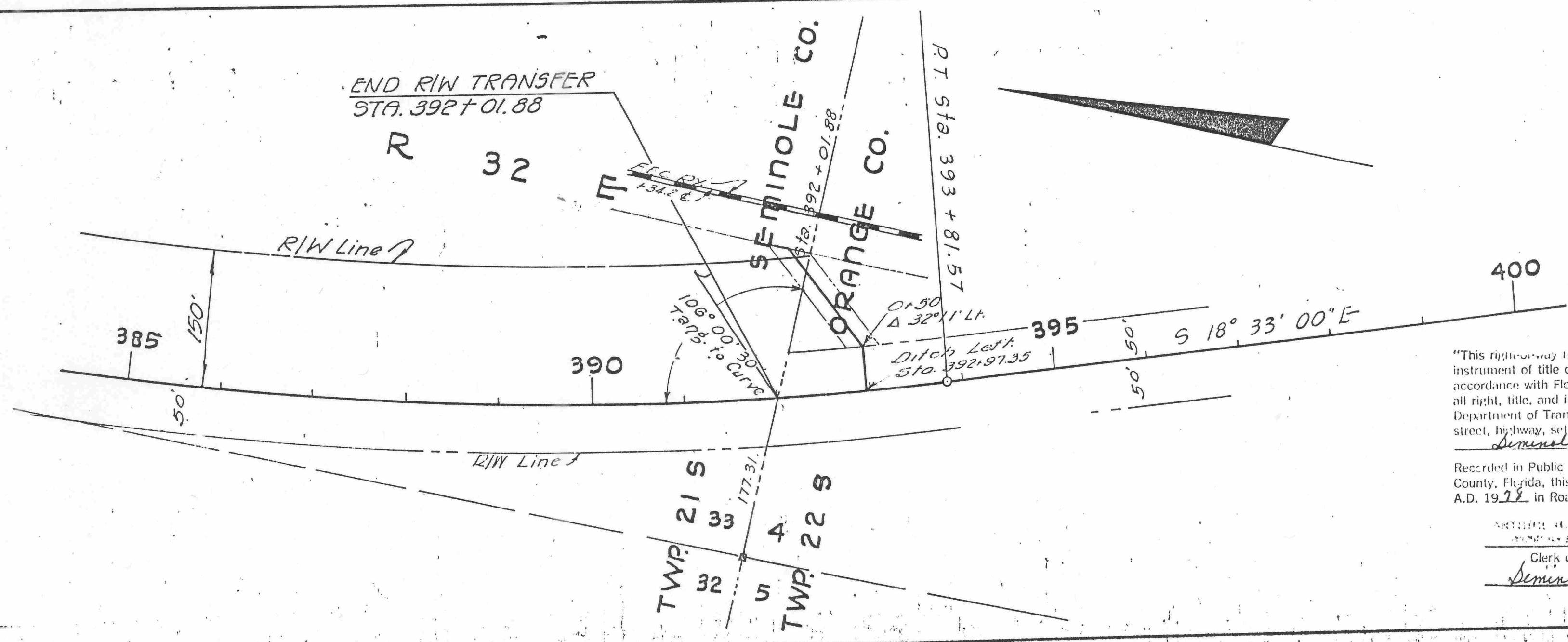
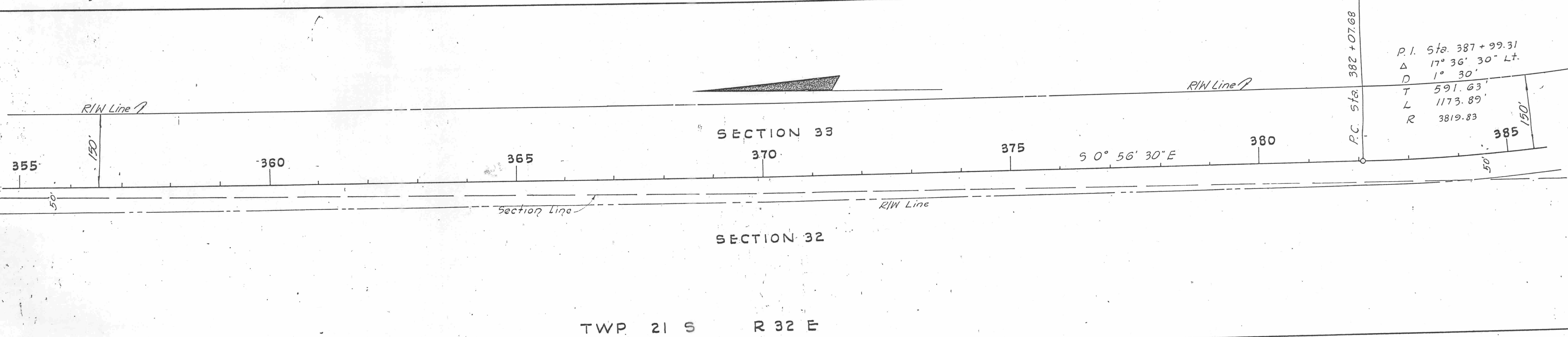
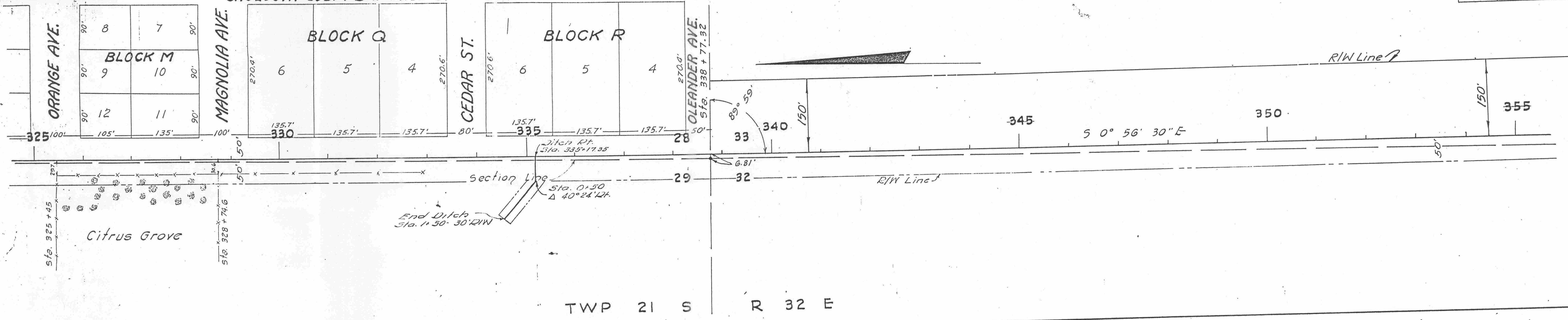
Recorded in Public Records of Seminoles County, Florida, this 15th day of March, A.D. 1978, in Road Plat Book 7, Page 8.

Clerk of Circuit Court, Seminoles County, Florida

STATE OF FLORIDA STATE ROAD DEPARTMENT			
R/W MAP - PROJECT 5436-			
ROAD NO. 203 - SEMINOLE COUNTY			
Names	Dates	Approved by	
Designed			
Drawn			
Traced	W.M.G. 5/9/41		
Checked		Drawing	
Revised	CES. 11-29-91	Index No.	



CHULUOTA SUB. PB 2 PAGE 31



NOTE: R/W Approved From Sta. 95+25.13 to 400+00

"This right-of-way map when recorded is an instrument of title conveyance, transferring in accordance with Florida Statutes, 337.29 (1977) all right, title, and interest of the Florida Department of Transportation in the road, street, highway, set forth on this map to Seminoles County, Florida."

Recorded in Public Records of Seminoles County, Florida, this 1st day of March, A.D. 1997, in Road Plat Book 1 Page 9

CLERK OF CIRCUIT COURT  
 Clerk of Circuit Court  
 Seminoles County, Florida  
 MAR 05 1997

Scale 1" = 100'

STATE OF FLORIDA  
 STATE ROAD DEPARTMENT  
 R/W MAP - PROJECT 5436  
 ROAD NO. (203) - SEMINOLE COUNTY

Names	Dates	Approved by
Designed		
Drawn		
Traced	W.M.G. 5/10/97	
Checked		
Revised		

10