

SEMINOLE COUNTY NATURAL LANDS RULES OF USE

Limitation of Liability - Seminole County does not, by providing any of its Natural Lands for outdoor recreational purposes, extend any assurance that such areas or lands are safe for any purpose. The County will attempt to post known hazardous conditions. Users of Natural Lands take upon themselves the risks inherent in using undeveloped natural properties and the resulting and proximate events and conditions arising from the use of these wild and scenic lands.

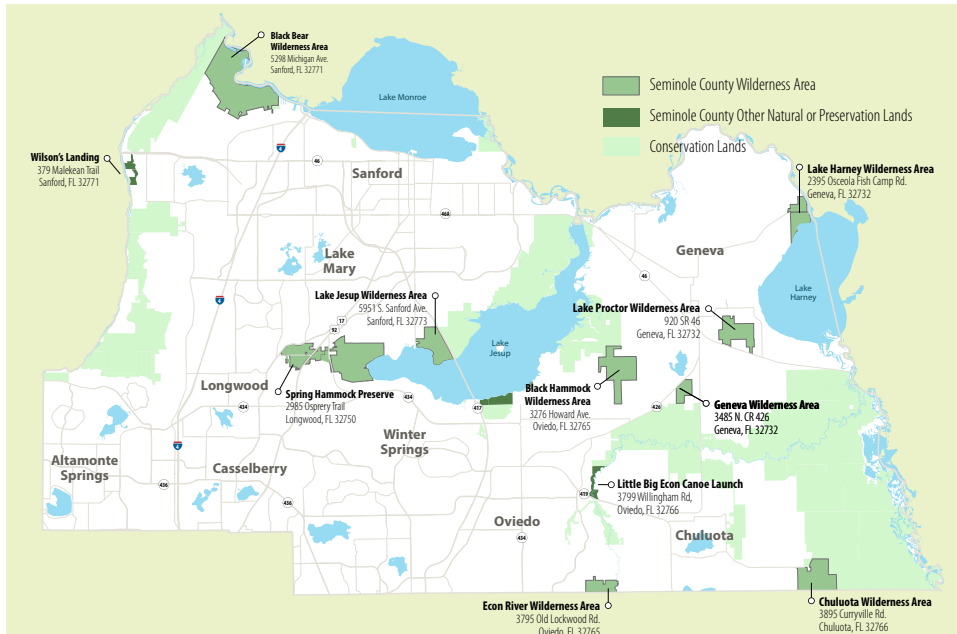
Access - Natural Lands areas will be open each day between sunrise and sunset unless posted otherwise. Natural Lands may be accessed only at County designated access points at permitted times.

Take nothing but pictures, kill nothing but time, leave nothing but footprints. All plants and animals on Natural Lands are protected. It is unlawful to remove or destroy plants or to remove, destroy or harass animals.

Pets - Domestic animals are allowed on Natural Lands provided they are leashed at all times.

Prohibited Activities - The following activities are prohibited on Natural Lands except where special approval has been granted by permit from Seminole County or in specific designated areas: Hunting, swimming, camping, waste disposal, destruction of property, posting of handbills, ignition of fires, introduction of plants or animals, operation of motorized vehicles, public disturbance, alcoholic beverages, sales or concessions, construction and all other uses not specifically referenced.

In order to increase your chances of viewing wildlife, please remember to pack out all trash/waste, keep pets on a leash at all times and enjoy the natural surroundings quietly.



SeminoleCountyLeisure

(407) 665-2211

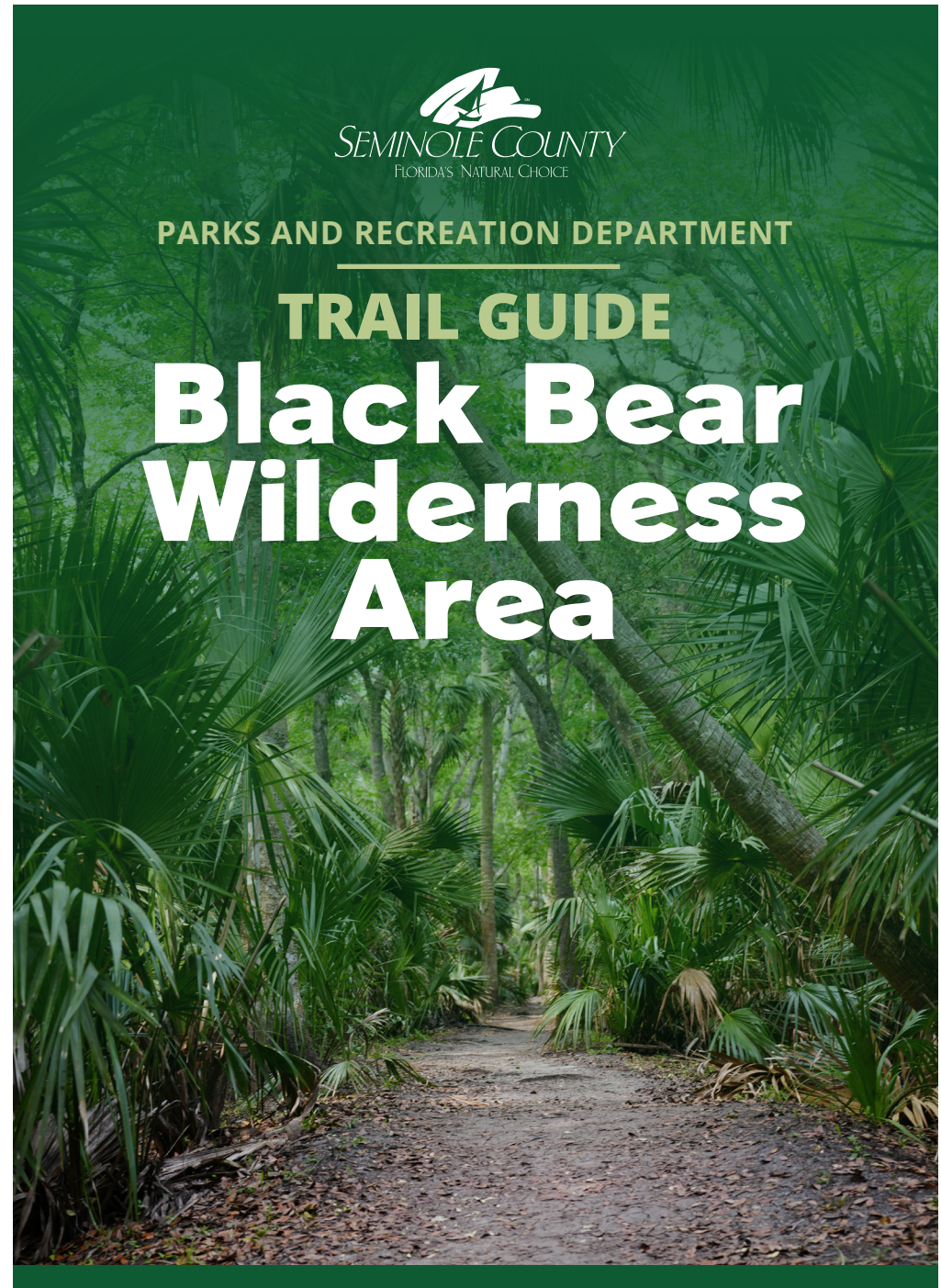
seminolecountyfl.gov/parks



PARKS AND RECREATION DEPARTMENT

TRAIL GUIDE

Black Bear Wilderness Area



IT STARTS IN
PARKS
Coaching. Connecting. Community.

5298 Michigan Avenue • Sanford, FL 32771

WELCOME TO THE BLACK BEAR WILDERNESS AREA

EXPLORE ONE OF SEMINOLE COUNTY'S NATURALLY BEAUTIFUL PLACES

Shallow marshes, hydric hammocks and cypress swamps form an intricate mosaic of habitats. This diversity hosts wildlife such as the white-tailed deer, swallow-tailed kite and Florida black bear. Its large size and proximity to other public lands make this site an important piece in a puzzle connecting natural areas between the Wekiva/St. Johns basins and the Ocala National Forest.

TRAILS AND ACCESS: The trail system at Black Bear Wilderness Area is established on historic levees and stays dry most of the year. However, this site is located within the floodplain of the St. Johns River and may experience significant flooding during the rainy season.

From the parking area, follow the blue blazes on an approximate 7.1 mile loop trail along the St. Johns River. Several boardwalks provide passage over wet areas.

This is a remote trail over rough, uneven terrain, where emergency access is very limited. You will encounter slopes, tree roots, and holes (animal burrows). Wear appropriate hiking shoes and a hat, bring water, use bug spray, and watch your step!

PRIMITIVE CAMPSITE: A primitive tent campsite is available for up to 6 people by permit only. This site is only accessible via the trail - no vehicles are allowed into the camping area.

For more information or to reserve the site, visit recreation.seminolecountyfl.gov or call 407-665-2211.

RECREATIONAL OPPORTUNITIES



LOOK FOR



ALLIGATOR



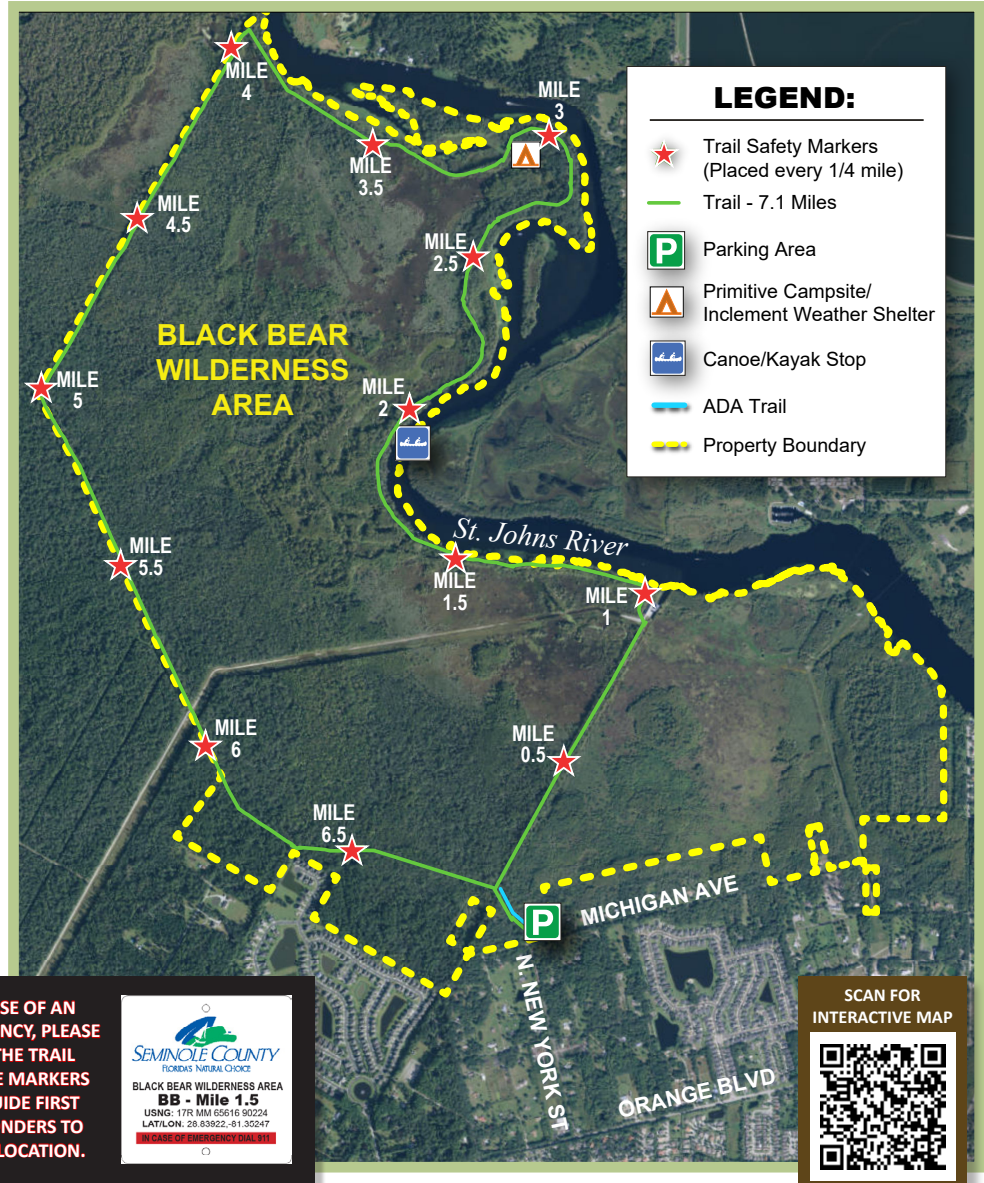
BLACK BEAR



CYPRESS TREES



RACCOON



For your safety and the protection of resources, please stay on the designated trail system.