

# SEMINOLE COUNTY NATURAL LANDS RULES OF USE

**Limitation of Liability** - Seminole County does not, by providing any of its Natural Lands for outdoor recreational purposes, extend any assurance that such areas or lands are safe for any purpose. The County will attempt to post known hazardous conditions. Users of Natural Lands take upon themselves the risks inherent in using undeveloped natural properties and the resulting and proximate events and conditions arising from the use of these wild and scenic lands.

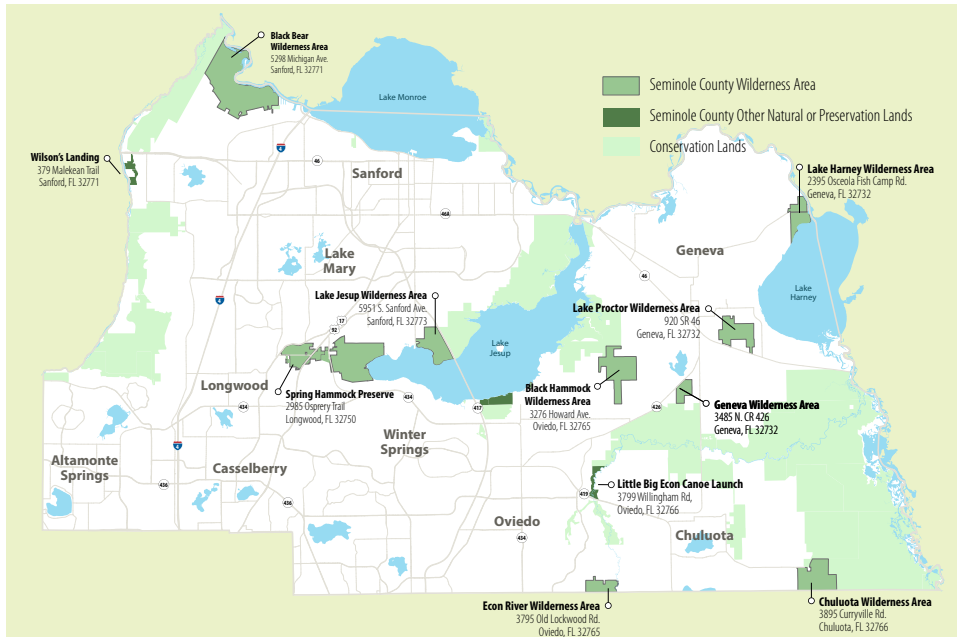
**Access** - Natural Lands areas will be open each day between sunrise and sunset unless posted otherwise. Natural Lands may be accessed only at County designated access points at permitted times.

**Take nothing but pictures, kill nothing but time, leave nothing but footprints.** All plants and animals on Natural Lands are protected. It is unlawful to remove or destroy plants or to remove, destroy or harass animals.

**Pets** - Domestic animals are allowed on Natural Lands provided they are leashed at all times.

**Prohibited Activities** - The following activities are prohibited on Natural Lands except where special approval has been granted by permit from Seminole County or in specific designated areas: Hunting, swimming, camping, waste disposal, destruction of property, posting of handbills, ignition of fires, introduction of plants or animals, operation of motorized vehicles, public disturbance, alcoholic beverages, sales or concessions, construction and all other uses not specifically referenced.

**In order to increase your chances of viewing wildlife, please remember to pack out all trash/waste, keep pets on a leash at all times and enjoy the natural surroundings quietly.**



SeminoleCountyLeisure

(407) 665-2211

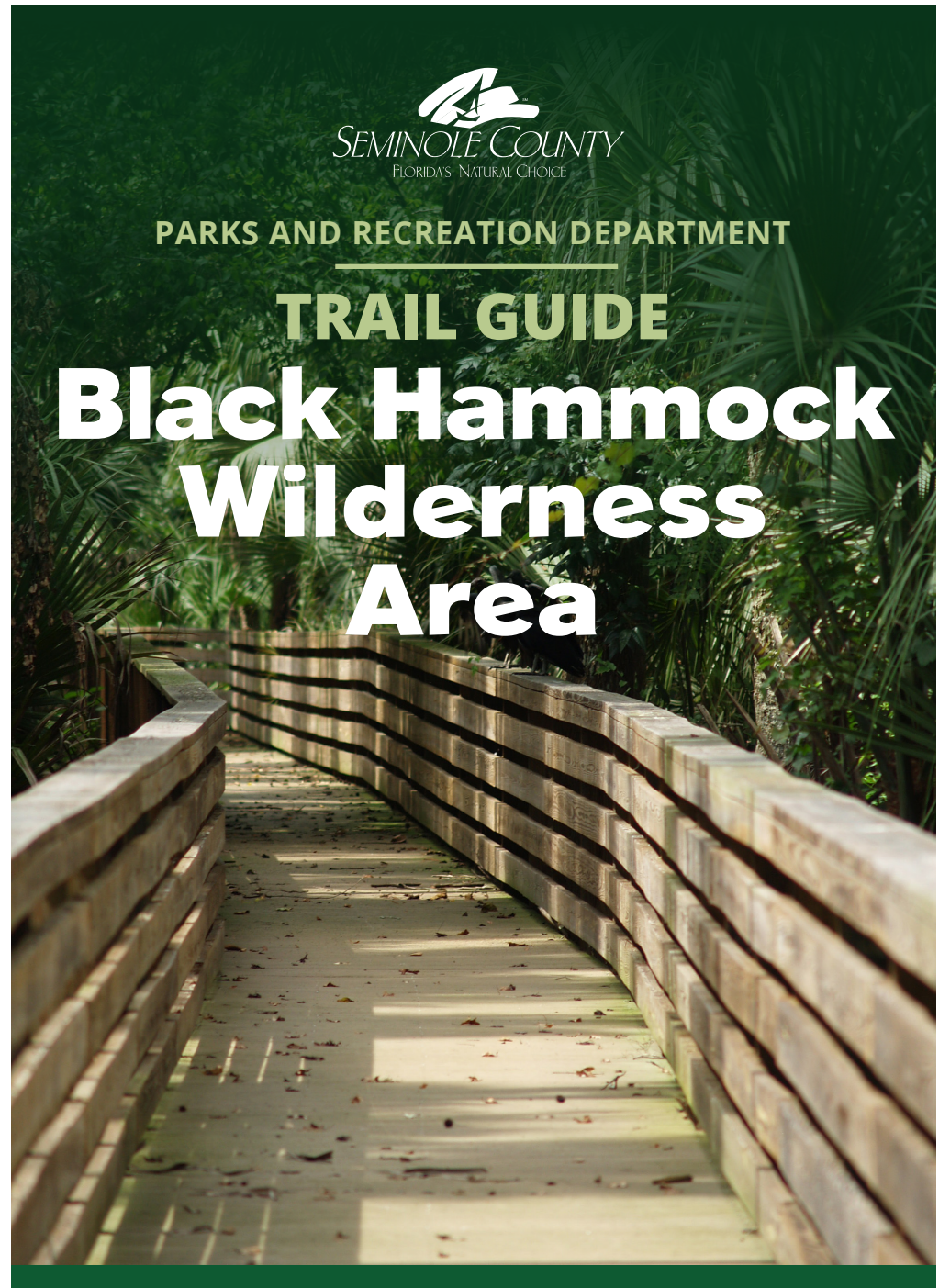
[seminolecountyfl.gov/parks](http://seminolecountyfl.gov/parks)



PARKS AND RECREATION DEPARTMENT

TRAIL GUIDE

# Black Hammock Wilderness Area



IT STARTS IN  
**PARKS**  
Coaching. Connecting. Community.

3276 Howard Avenue • Oviedo, FL 32765

# WELCOME TO THE BLACK HAMMOCK WILDERNESS AREA

## EXPLORE ONE OF SEMINOLE COUNTY'S NATURALLY BEAUTIFUL PLACES

This land was acquired in partnership with the St. Johns River Water Management District to preserve significant habitat along the shores of Lake Jesup. Hike along boardwalks through hydric hammocks, mixed-hardwood swamp, pine flatwoods and sand pine scrub. Wildlife here includes barred owls, white-tailed deer, bobcats and eastern coral snakes.

**TRAILS AND ACCESS:** The trail system at the BHWA consists of one main loop trail (4.5 miles round trip) blazed in blue. There are many unmarked trails (fire lines) on this property. Please stay on the marked (blue) trail system for your safety.

In an effort to protect the resources of this relatively small wilderness area, the trail system is limited to hikers, bikers and local equestrians. Please note that for the safety of equestrians and other users, horses are not permitted on boardwalks.

## RECREATIONAL OPPORTUNITIES



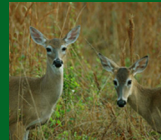
## LOOK FOR



**DUSKY PIGMY RATTLESNAKE**



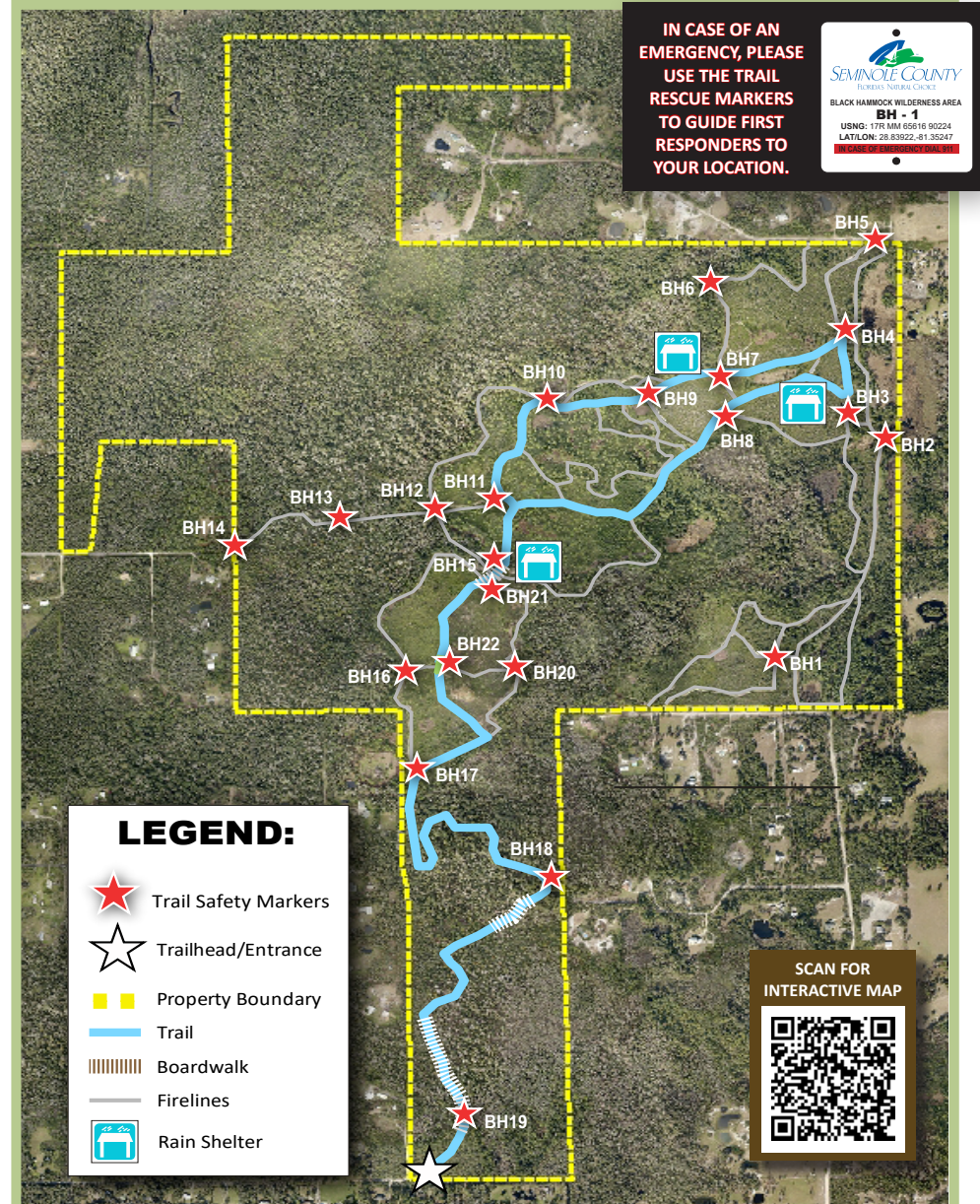
**WILD TURKEY**



**WHITE-TAILED DEER**



**GREAT HORNED OWL**



For your safety and the protection of resources, please stay on the designated trail system.