

SEMINOLE COUNTY NATURAL LANDS RULES OF USE

Limitation of Liability - Seminole County does not, by providing any of its Natural Lands for outdoor recreational purposes, extend any assurance that such areas or lands are safe for any purpose. The County will attempt to post known hazardous conditions. Users of Natural Lands take upon themselves the risks inherent in using undeveloped natural properties and the resulting and proximate events and conditions arising from the use of these wild and scenic lands.

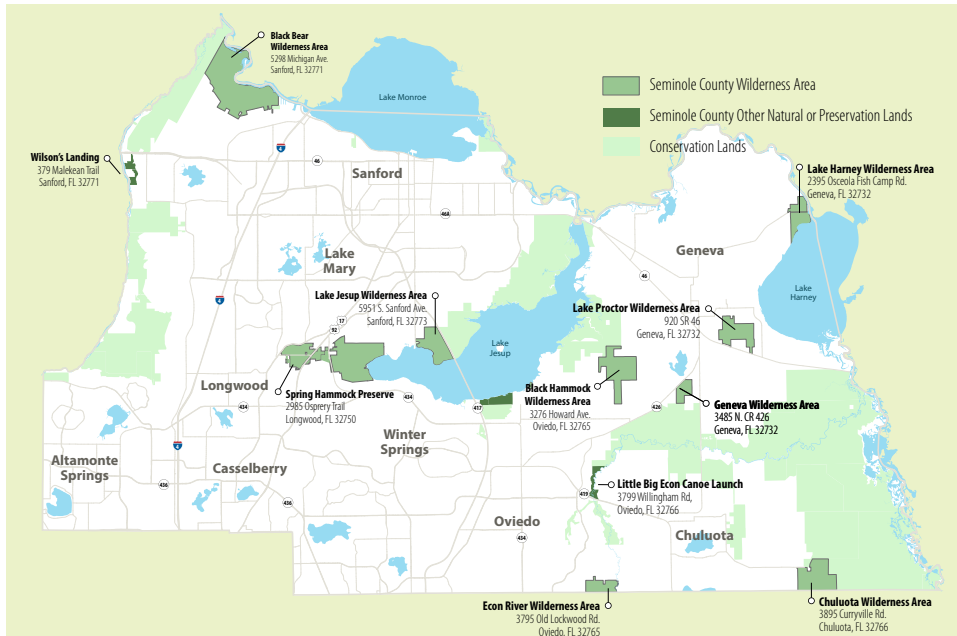
Access - Natural Lands areas will be open each day between sunrise and sunset unless posted otherwise. Natural Lands may be accessed only at County designated access points at permitted times.

Take nothing but pictures, kill nothing but time, leave nothing but footprints. All plants and animals on Natural Lands are protected. It is unlawful to remove or destroy plants or to remove, destroy or harass animals.

Pets - Domestic animals are allowed on Natural Lands provided they are leashed at all times.

Prohibited Activities - The following activities are prohibited on Natural Lands except where special approval has been granted by permit from Seminole County or in specific designated areas: Hunting, swimming, camping, waste disposal, destruction of property, posting of handbills, ignition of fires, introduction of plants or animals, operation of motorized vehicles, public disturbance, alcoholic beverages, sales or concessions, construction and all other uses not specifically referenced.

In order to increase your chances of viewing wildlife, please remember to pack out all trash/waste, keep pets on a leash at all times and enjoy the natural surroundings quietly.



SeminoleCountyLeisure

(407) 665-2211

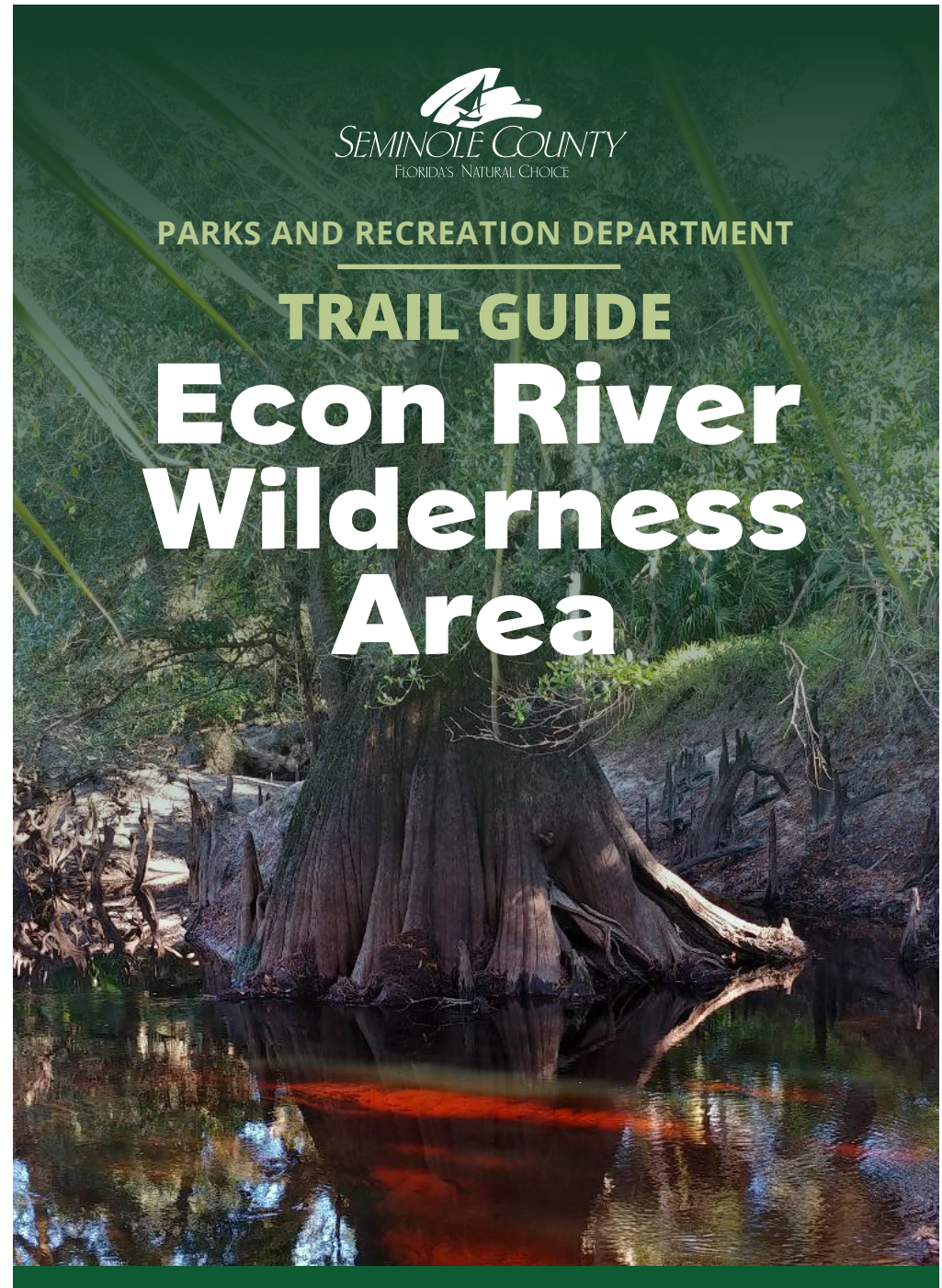
seminolecountyfl.gov/parks



PARKS AND RECREATION DEPARTMENT

TRAIL GUIDE

Econ River Wilderness Area



IT STARTS IN
PARKS
Coaching. Connecting. Community.

3795 Old Lockwood Road • Oviedo, FL 32765

WELCOME TO THE ECON RIVER WILDERNESS AREA

EXPLORE ONE OF SEMINOLE COUNTY'S NATURALLY BEAUTIFUL PLACES

The Econlockhatchee River, like the St. Johns River, is one of very few rivers in North America that flows north. This scenic walking trail will take you through habitats such as pine flatwoods, sandhill, and river swamp. Wildlife observed on this site includes the great horned owl, white-tailed deer, and red-headed woodpecker.

TRAILS AND ACCESS: The trail system on this site consists of a main loop trail blazed in red (2.2 miles) with a secondary flatwoods loop blazed in yellow (0.5 mile). A round trip from the entrance to the river and back takes approximately 1.5 hours, longer if you stop to enjoy the scenery. Portions of the trail may be flooded during the wet season.

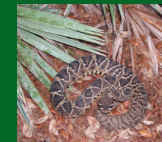
RECREATIONAL OPPORTUNITIES



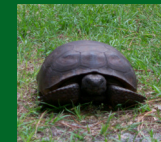
LOOK FOR



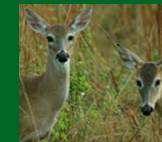
RIVER OTTER



EASTERN DIAMONDBACK



GOPHER TORTOISE



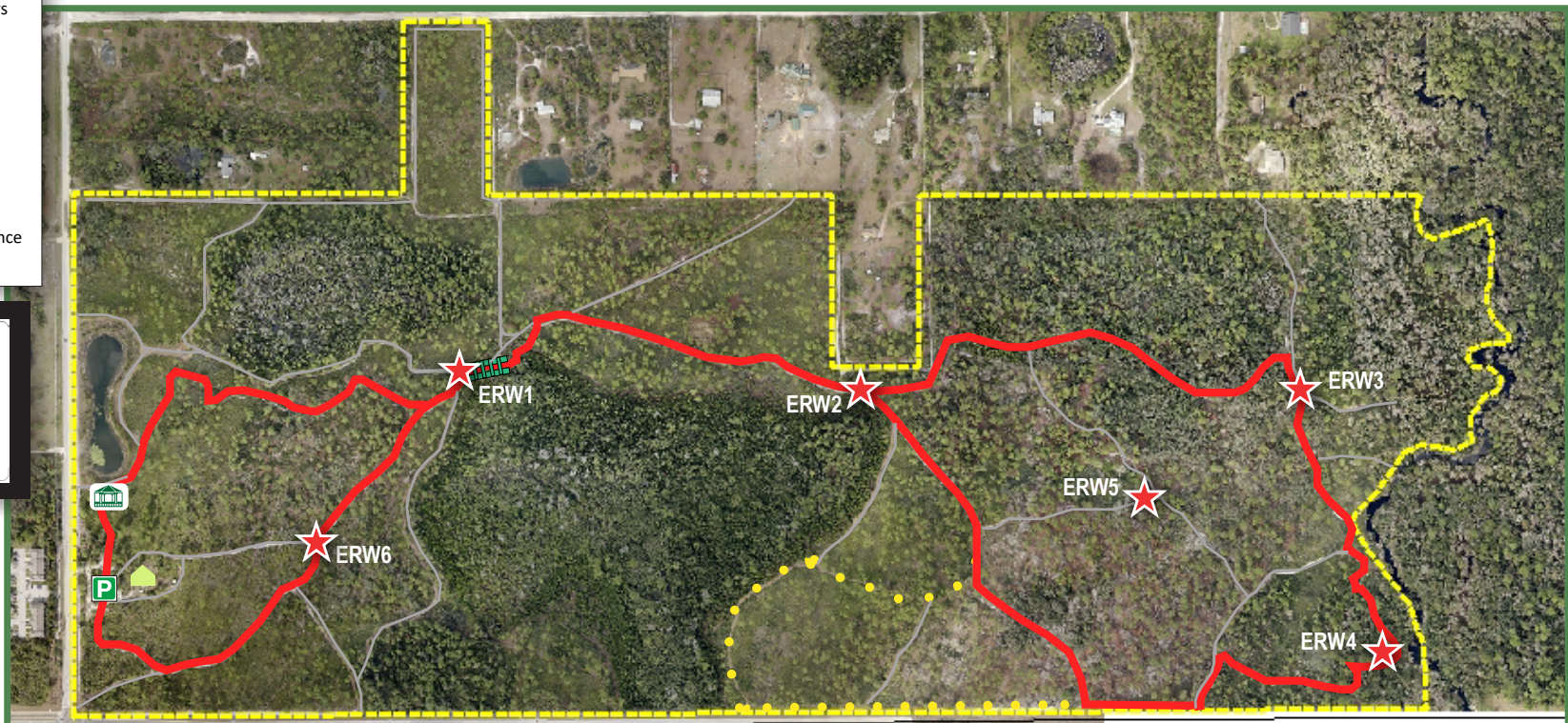
WHITE-TAILED DEER



RED HEADED WOODPECKER

LEGEND:

- Trail Safety Markers
- Property Boundary
- Parking Area
- Red Trail
- Yellow Trail
- Fire Lines
- Rain Shelter
- Caretaker's Residence
- Boardwalk



IN CASE OF AN EMERGENCY, PLEASE USE THE TRAIL RESCUE MARKERS TO GUIDE FIRST RESPONDERS TO YOUR LOCATION.



SCAN FOR INTERACTIVE MAP



For your safety and the protection of resources, please stay on the designated trail system.