

# SEMINOLE COUNTY NATURAL LANDS RULES OF USE

**Limitation of Liability** - Seminole County does not, by providing any of its Natural Lands for outdoor recreational purposes, extend any assurance that such areas or lands are safe for any purpose. The County will attempt to post known hazardous conditions. Users of Natural Lands take upon themselves the risks inherent in using undeveloped natural properties and the resulting and proximate events and conditions arising from the use of these wild and scenic lands.

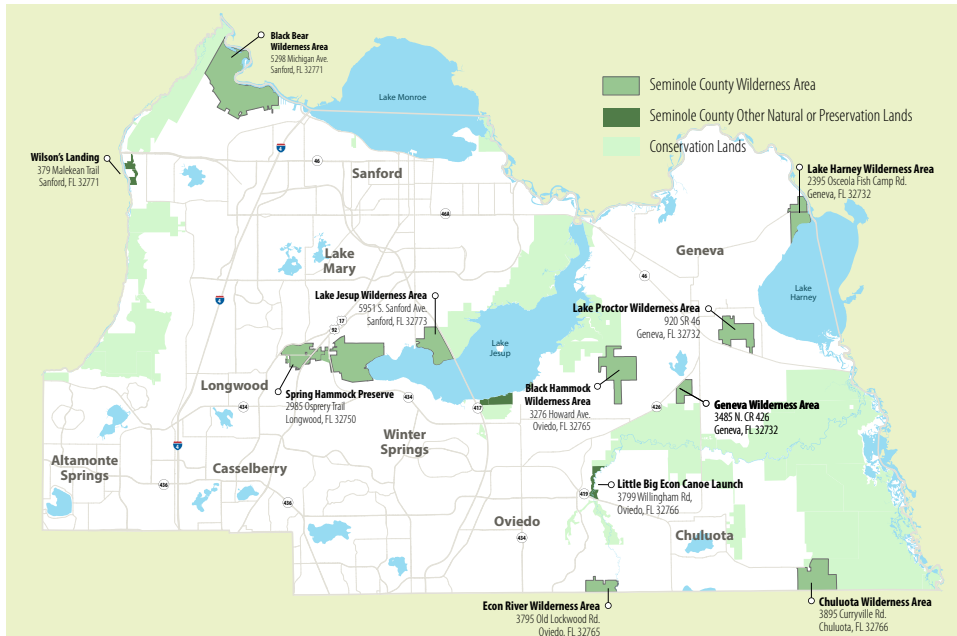
**Access** - Natural Lands areas will be open each day between sunrise and sunset unless posted otherwise. Natural Lands may be accessed only at County designated access points at permitted times.

**Take nothing but pictures, kill nothing but time, leave nothing but footprints.** All plants and animals on Natural Lands are protected. It is unlawful to remove or destroy plants or to remove, destroy or harass animals.

**Pets** - Domestic animals are allowed on Natural Lands provided they are leashed at all times.

**Prohibited Activities** - The following activities are prohibited on Natural Lands except where special approval has been granted by permit from Seminole County or in specific designated areas: Hunting, swimming, camping, waste disposal, destruction of property, posting of handbills, ignition of fires, introduction of plants or animals, operation of motorized vehicles, public disturbance, alcoholic beverages, sales or concessions, construction and all other uses not specifically referenced.

**In order to increase your chances of viewing wildlife, please remember to pack out all trash/waste, keep pets on a leash at all times and enjoy the natural surroundings quietly.**



SeminoleCountyLeisure

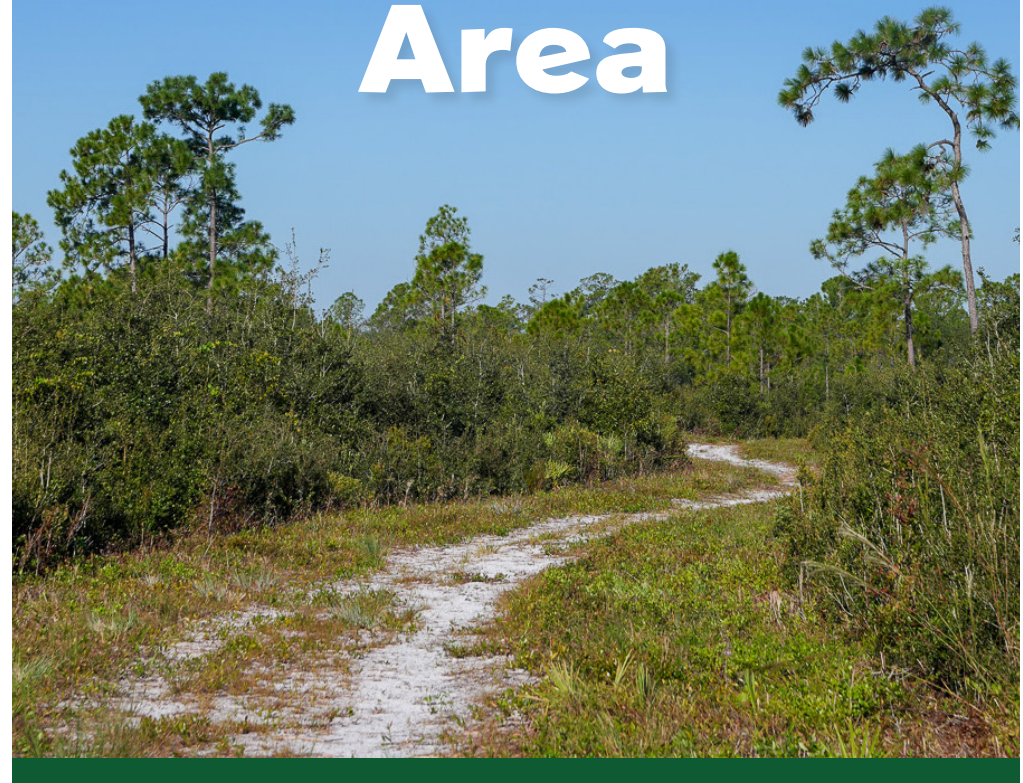
(407) 665-2211

[seminolecountyfl.gov/parks](http://seminolecountyfl.gov/parks)



PARKS AND RECREATION DEPARTMENT

# TRAIL GUIDE Geneva Wilderness Area



IT STARTS IN  
**PARKS**  
Coaching. Connecting. Community.

3485 N. County Road 426 • Geneva, FL 32732



# WELCOME TO THE GENEVA WILDERNESS AREA

## EXPLORE ONE OF SEMINOLE COUNTY'S NATURALLY BEAUTIFUL PLACES

This site, which is home to the Ed and Imogene Yarborough Nature Center, features a beautiful mosaic of flatwoods, ponds, sand pine scrub and bayhead swamp, all supporting an equally diverse collection of wildlife. A hike here can reward visitors with sightings of gopher tortoise, white-tailed deer, wild turkey and gray fox.

**TRAILS AND ACCESS:** The red blazes mark a 1.5 mile loop trail within the Geneva Wilderness Area (GWA) that takes about 30 to 45 minutes to hike. Of course, this hike will be longer if you stop at the amphitheater or along the lake to enjoy the view.

The yellow blazes mark the connection to the Flagler Trail which runs north to south (blazed in blue) through the Little Big Econ State Forest and crosses the Econ River. A hike from the GWA parking area to the Econ River and back takes approximately three hours.

Small primitive group campsite is available by permit only. Please call 407-665-2211 for more information.

## CHECK OUT!

### THE ED AND IMOGENE YARBOROUGH NATURE CENTER

Looking for a unique place to hold a meeting, birthday party, event, program or retreat for groups up to 40? The Ed and Imogene Yarborough Nature Center at the

Geneva Wilderness Area sits in the middle of 180 acres and is surrounded by Florida's natural beauty! This venue includes an air-conditioned building/nature center with a small kitchen, television, A/V equipment, live animal displays and restrooms, as well as a large group campsite/pavilion with restrooms, a fishing pier and nature trails. Nature-based programs and activities can be provided for your event.

Cost: \$32/hr. + tax. For more information, please call 407-665-2211.

Scan To See Upcoming Events



## RECREATIONAL OPPORTUNITIES



IN CASE OF AN EMERGENCY, PLEASE USE THE TRAIL RESCUE MARKERS TO GUIDE FIRST RESPONDERS TO YOUR LOCATION.



For your safety and the protection of resources, please stay on the designated trail system.