

**Seminole County
Parks & Preservation Advisory Committee
Meeting Minutes
July 21, 2022**

Members Present: Bryce Gibson, Emily Hanna, Reid Hilliard, Joseph Humphreys, Nancy Dunn, Angela Fleming, Mark Brandenburg, Ashlee Woodward, William Wills, Robert Bowden

Members Absent: Tom Boyko, Ed Ghiglieri, Pasha Baker

Guest: Doug Crenshaw, Seminole County Resident

Staff Present: Michael Wirsing, Parks and Recreation
William Pandos, Greenways & Natural Lands Manager
Sherry Williams, Project Manager
Richard Durr, Department Director
Cindy Kelley, Administration Assistant

Location: Boombah Soldiers Creek
2400 State Road 419
Longwood, FL 32750

On Wednesday, July 21, 2022, Chairman Mark Brandenburg called the meeting to order at 6:35 p.m. There is a quorum in attendance.

Pledge of Allegiance, Welcome and Introductions

Mr. Brandenburg led the pledge of allegiance and introduced the guest.

Approval of Minutes:

Mr. Brandenburg asked if there were any questions or corrections regarding the minutes for the May meeting minutes. There were no questions or corrections. A motion was made and seconded. The motion passed unanimously.

New Business:

- Sherry Williams gave a presentation for the Cross Seminole Land Management Plan.
- Link will be sent to committee members when the state approves the plan.
- Outline of plan attached.

**Seminole County
Parks & Preservation Advisory Committee
Meeting Minutes
July 21, 2022**

- Did not have much on the board meeting since last meeting.
- Short staffed across the board. Pay increases will hopefully help that.
- September budget-doing 2023 Parks and Recreation master plan for accreditation. 10-year plan
- David Bear presenting to the Board in September a case for putting a Natural Lands Bond Referendum on the ballot this fall. People from this committee should be there if interested. Purely citizen driven presentation.

Greenways and Natural Lands Division Update

Bill Pandos gave the update on Greenways and Natural Lands Division

Passive Parks

- Eco camp went well this year.
- Canoe and Kayak rental Service out for bid-did not receive any bids to bring rentals to parks.
- Street sweeping only 4 times a year. Subcontracted out. Talking to cities to see if they are willing to do streets in their cities.
- Winwood park restroom in progress-completed by the end of June.
- Sunland park refurbishment-still in progress.
- Big Tree Park fitness station-installation is complete.
- Black Bear Wilderness parking area construction in progress. Need to do pond grading. Should be completed by end of August.
- Midway/Riverbend roadway project-46 and Lake Mary Blvd-in progress.
- Monroe Wayside Boat Ramp-seeking BCC approval.
- Park signage project-finalizing the upgrade.
- Health Dept.-Fitness Station-complete.
- Street sweeping only 4 times a year. Talking to cities to see if they are willing to do streets in their cities.
- Deer Run park-working on Master plan, finalizing contract
- Rolling Hills-60% construction plans.
- Trail safety feasibility-should have information soon on that. The overpasses are being worked on. Bring it before the committee for input on the plans.

**Seminole County
Parks & Preservation Advisory Committee
Meeting Minutes
July 21, 2022**

- Master Services Design Contract- completed our interviews.
- Midway Park-new playground and court lighting.
- Skills track is hoping to start construction this week at the Markham Trail Head.

Parks and Recreation

Michael Wirsing gave the update on the Parks and Recreation

- Tournaments going strong.
- Tennis tournaments just finishing.
- Perfect Game will have more tournaments starting next week.
- Wekiva Golf Course up 50% from last year on usage and up on revenue.
- ADA training going on. Changing items that need to be addressed.
- July is **Parks Appreciation Month**. Take pictures at 3 different parks and show them at the park to receive a retro poster.

Meeting was adjourned at 8:00 PM.

CROSS SEMINOLE TRAIL LAND MANAGEMENT PLAN EXECUTIVE SUMMARY

The Cross Seminole Trail (CST) is a 14-foot-wide multi-use paved trail (in most areas) which traverses through Oviedo, Winter Springs, Longwood, Lake Mary and Sanford in Seminole County. The trail corridor is approximately 27.69 miles in length, of which 11.3 miles are owned by the Board of Trustees of the Internal Improvement Trust Fund (Trustees) in two segments (2.75 and 8.55 miles). The Florida Department of Transportation (FDOT) owns 1.85 miles. The remaining 14.54 miles are owned by or otherwise in the control of Seminole County. Development of the trail has occurred in phases, with the entire 27.69 miles now opened to public use.

Current uses of the CST include walking/hiking/jogging, bicycling and inline skating. Horseback riding is allowed along the wider shoulder areas between the City of Winter Springs and Oviedo. The natural area adjacent to the paved trail from Franklin Street in Oviedo to the northern terminus of the CST has been designated as part of the Florida National Scenic Trail. The CST connects to Orange County's Cady Way Trail at its southern terminus.

Locally managed parks, which also serve as trailheads for the CST, provide restrooms, picnic pavilions, exercise stations, playgrounds, sports fields, wildlife viewing and environmental education opportunities. These include CST Rinehart/Lake Mary Trailhead Park (not managed by the County), Greenwood Lakes Park, Spring Hammock Preserve, Big Tree Park, Soldier's Creek Park and Central Winds Park (not managed by Seminole County).

The CST state-owned property was the ninth negotiated purchase under the Rails-to-Trails Program. On December 5, 1996, the Trustees obtained fee simple title to 116.38 acres of abandoned rail right-of-way purchased from CSX Transportation, Inc. for \$6,900,000 with funds from the state's Preservation 2000 Program. On March 1, 1997, the Trustees conveyed management authority of the property to the Florida Department of Environmental Protection's Office of Greenways and Trails (OGT) under lease number 4147. OGT, in turn, conveyed management authority conveyed management authority to Seminole County via sublease number 4147-01 on August 12, 1997. The term of both the lease and sublease expires March 30, 2047 (Appendix B).

The CST is located on a former rail corridor, which is listed as a resource group with the Florida State Site File (SE02138). The former rail corridor was the primary transportation link to the South Lake Jesup region and facilitated the delivery of fertilizer and the transporting of vegetables grown on the area's hydric soils. The facilities needed to sustain the former agriculture industry are some of the oldest buildings of its kind within Seminole County. In downtown Oviedo, these include the Nelson and Company and the R. W. Estes Celery Pre-Cooler Plants, both of which are listed on the National Register of Historic Places. According to the Division of Historical Resources (DHR), the Florida Master Site File contains no previously recorded archaeological sites, four resource groups and eight standing structures which are near the trail corridor.

The existing natural communities are located on the edge of the boundary of the trail corridor, and include mesic flatwoods, bayhead, scrub, scrubby flatwoods and blackwater stream. These plant communities are highly disturbed due to railroad construction and now the existence of the trail. Invasive plants along the corridor include air potato (*Dioscorea bulbifera*), skunkvine (*Paederia foetida*), Chinaberry (*Melia azedarach*), cogongrass (*Imperata cylindrica*), Brazilian pepper (*Schinus terebinthifolius*), Camphor tree (*Cinnamomum camphora*), and Swordfern (*Nephrolepis* spp.).

Florida Natural Areas Inventory (FNAI) data indicate a federally listed species, Eastern indigo snake (*Drymarchon couperi*), on or very near the site. Other occurrences within one-half mile of the CST, include the gopher tortoise (*Gopherus polyphemus*), Bald Eagle (*Haliaeetus leucocephalus*), Gopher Tortoise Aphodius Beetle (*Aphodius troglodytes*), Gopher Tortoise Copris Beetle (*Copris gopher*), Large-Jawed Cebrionid Beetle (*Selonodon mandibularis*) and the Florida Long-tailed Weasel (*Mustela frenata peninsulae*). Most of these records are old and the natural communities that existed at that time are only located in one area where the trail bisects Spring Hammock Preserve. The only known listed species located on the trail corridor is the gopher tortoise.

The Cross Seminole Trail has now been completed in its entirety as of 2021. Seminole County finalized a Trails Master Plan 2020 Update that addresses alternative connections to the trail and widening sidewalk sections of the CST that are located along three- and five-foot sidewalks (all these connections are on County or City owned property). County contractors continue to treat invasive plants along the corridor.

ACCOMPLISHMENTS – 2012-2022

1. Completed a 0.3-mile section between SR 434 and Oviedo Blvd. with a pedestrian crossing.
2. Completed the 0.6-mile “missing link” between Spring Hammock Preserve and Layer Elementary School.
3. Trails Master Plan 2020 Update completed in 2021.
4. Safety Improvement Plan for trails completed in 2022.
5. ADA Transition Plan – the County is in the process of completing an ADA Transition Plan that includes and evaluation and recommendations for the Cross Seminole Trail.
6. Added bike repair stations to trailheads.
7. Entering construction phase to modify 17-92 pedestrian bridge access to sidewalk (ADA compliant).
8. New mile markers.
9. New informational kiosks.

Future projects/goals include:

1. Upgrading the north section of the trail.
2. Restoring the urban tree canopy where needed.
3. Developing the powerline alignment in Lake Mary.
4. Develop a trailhead at Lake Monroe Wayside Park.
5. Improve SR 46 crossings.
6. Refine the crossing at Ronald Reagan.

**Seminole County Public Works
Multi-Use Trail Project Status
July 2022**

Interstate 4 Overpass Cross Seminole Trail Connector Remediation

Limits: Bridge segment

Status: Remediation work complete.

Lake Monroe Loop - Celery / Mellonville Trail

Limits: Sanford Riverwalk to SR 415

Status: Design complete. ROW acquisition in process.

EE Williamson Rd Trail Connector

Limits: I-4 Bridge to CR 427/Ronald Reagan Blvd

Status: Construction underway.

Orange Blvd/CR 431 Safety Improvements (includes Ped/Bike enhancements)

Limits: SR 46 to Monroe Rd

Status: Design and ROW acquisition in process.

Cross Seminole Trail Connector Ramps at US 17-92

Limits: CST at US 17-92

Status: Coordination with FDOT underway.

North Section of the Central Seminole Trail (FKA Power Corridor Trail Study)

Limits: SR 434 to Cross Seminole Trail

Status: Feasibility study complete, move to design next.

Seminole Wekiva Trail Tunnels at SR 434 and SR 436

Limits: SR 434 at Orange Blvd. SR 436 at Laurel St.

Status: Design RFP issued May 2022.

Three proposals received and undergoing staff review.

Tentative Schedule: 7/28/2022 – Staff Evaluation Meeting

8/11/2022 – Presentations

9/13/2022 – Board Meeting

SR 434 Improvements to include Roundabouts and Bike/Ped/Trail improvements

Limits: SR 417 to Franklin St.

Status: At 60% design plans.



Parks & Preservation Advisory Committee Meeting

July 20, 2022



Today's Agenda

Call to Order – Mark Brandenburg

Pledge of Allegiance

Welcome/Introductions – Mark Brandenburg

Approval of May 2022 Meeting Minutes

New Business:

Sherry Williams

- Cross Seminole Trail Land Management Plan

Bill Pandos

- Greenways and Natural Lands Division Updates

Michael Wirsing

- Parks and Recreation Division Updates

Rick Durr

- BCC Agenda items of Interest

Old Business

Public Comment

Adjourn

Cross Seminole Trail Land Management Plan 2022



Parks & Preservation Advisory Committee Meeting

July 20, 2022

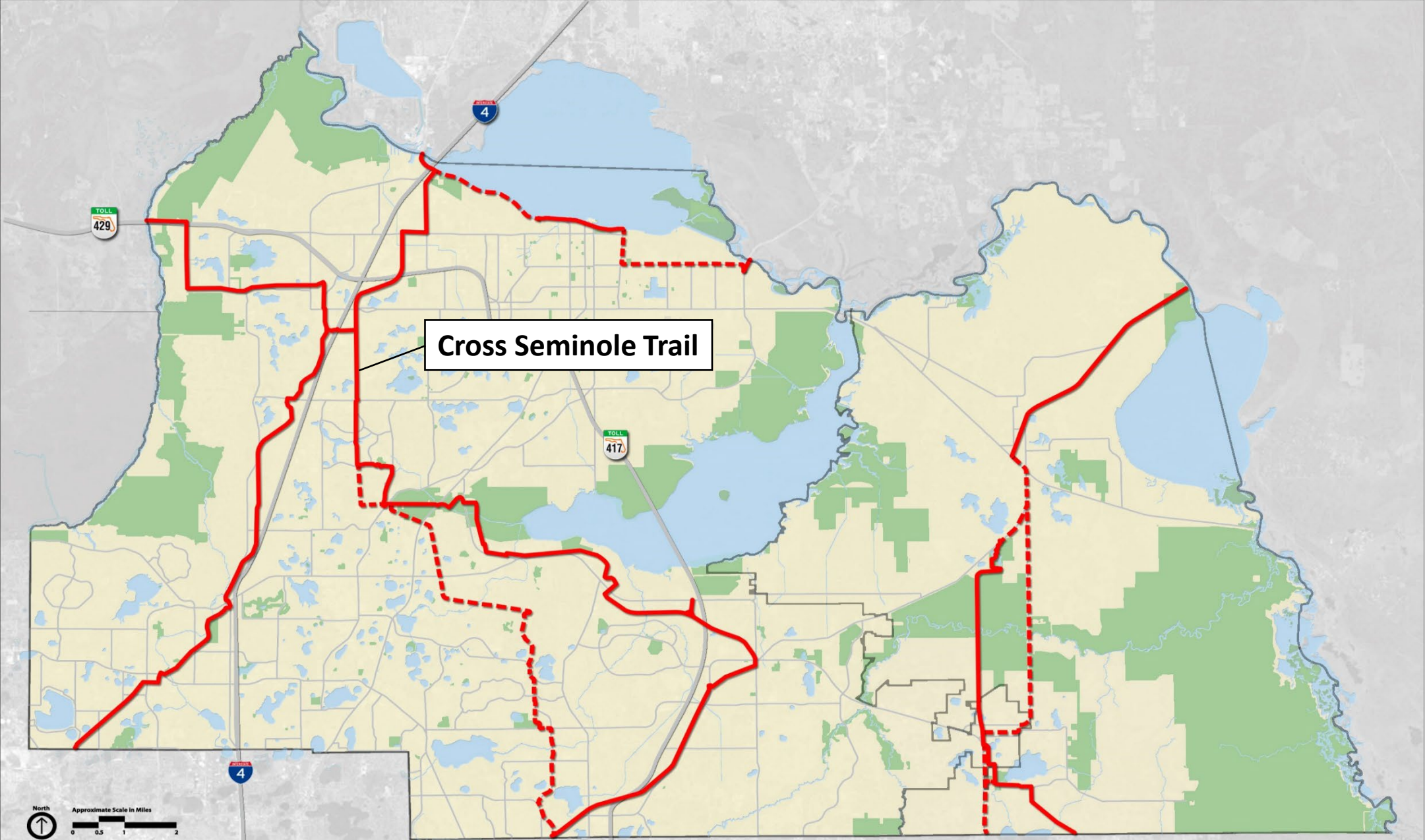
Cross Seminole Trail Land Management Plan 2022



Ownership:

- 11.3 Miles State Lease # 4147 and # 4147-01
- 1.85 miles FDOT
- 14.54 miles Seminole County
- Total Miles = 27.69

Cross Seminole Trail Land Management Plan 2022



Cross Seminole Trail Land Management Plan 2022



Cross Seminole Trail Land Management Plan 2022

10-Year Management Plan Update:

- Accomplishments
- Update Information in Plan
- Set New Goals for Next 10 Years

Cross Seminole Trail Land Management Plan 2022

10-Year Management Plan Update:

- **Accomplishments**
- Update Information in Plan
- Set New Goals for Next 10 Years

Cross Seminole Trail Land Management Plan 2022



Accomplishments:

- Completed 0.3-mile section between SR 434 and Oviedo Blvd with pedestrian crossing
- Completed the 0.6-mile “missing link”
- Completed Trails Master Plan Update
- Safety Improvement Plan to be completed in 2022

Cross Seminole Trail Land Management Plan 2022



Accomplishments cont'd:

- Added bike repair stations to trailheads
- Entering construction phase to modify 17-92 pedestrian bridge access to sidewalk
- New mile markers
- New informational kiosks

Cross Seminole Trail Land Management Plan 2022

10-Year Management Plan Update:

- Accomplishments
- Update Information in Plan
- Set New Goals for Next 10 Years

CROSS SEMINOLE TRAIL LAND MANAGEMENT PLAN EXECUTIVE SUMMARY

The Cross Seminole Trail (CST) is a 14-foot-wide multi-use paved trail (in most areas) which traverses through Oviedo, Winter Springs, Longwood, Lake Mary and Sanford in Seminole County. The trail corridor is approximately 27.69 miles in length, of which 11.3 miles are owned by the Board of Trustees of the Internal Improvement Trust Fund (Trustees) in two segments (2.75 and 8.55 miles). The Florida Department of Transportation (FDOT) owns 1.85 miles. The remaining 14.54 miles are owned by or otherwise in the control of Seminole County. Development of the trail has occurred in phases, with the entire 27.69 miles now opened to public use.

Current uses of the CST include walking/hiking/jogging, bicycling and inline skating. Horseback riding is allowed along the wider shoulder areas between the City of Winter Springs and Oviedo. The natural area adjacent to the paved trail from Franklin Street in Oviedo to the northern terminus of the CST has been designated as part of the Florida National Scenic Trail. The CST connects to Orange County's Cady Way Trail at its southern terminus.

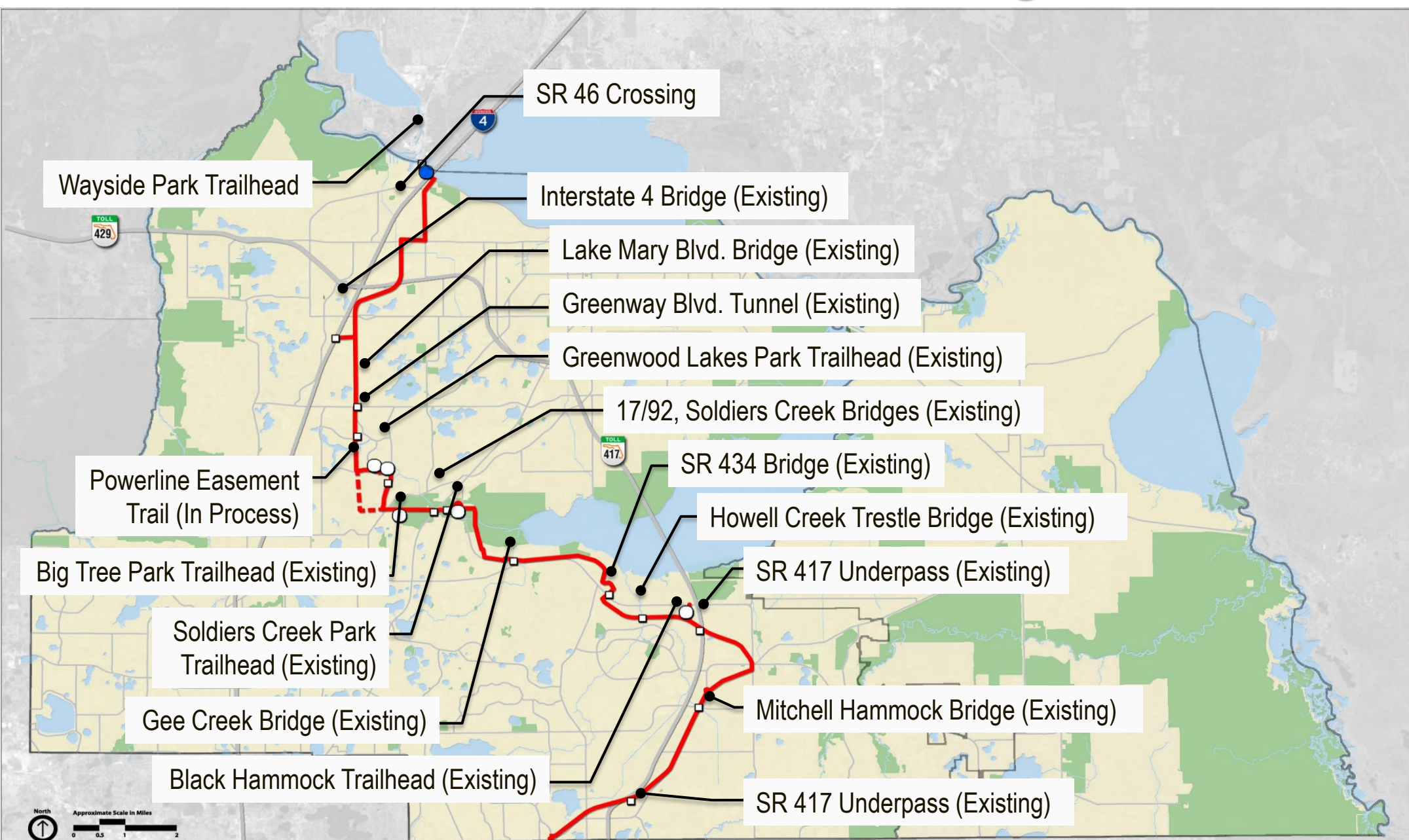
Locally managed parks, which also serve as trailheads for the CST, provide restrooms, picnic pavilions, exercise stations, playgrounds, sports fields, wildlife viewing and environmental education opportunities. These include CST Rinehart/Lake Mary Trailhead Park (not managed by the County), Greenwood Lakes Park, Spring Hammock Preserve, Big Tree Park, Soldier's Creek Park and Central Winds Park (not managed by Seminole County).

The CST state-owned property was the ninth negotiated purchase under the Rails-to-Trails Program. On December 5, 1996, the Trustees obtained fee simple title to 116.38 acres of abandoned rail right-of-way purchased from CSX Transportation, Inc. for \$6,900,000 with funds from the state's Preservation 2000 Program. On March 1, 1997, the Trustees conveyed management authority of the property to the Florida Department of Environmental Protection's Office of Greenways and Trails (OGT) under lease number 4147. OGT, in turn, conveyed management authority conveyed management authority to Seminole County via sublease number 4147-01 on August 12, 1997. The term of both the lease and sublease expires March 30, 2047 (Appendix B).

The CST is located on a former rail corridor, which is listed as a resource group with the Florida State Site File (SE02138). The former rail corridor was the primary transportation link to the South Lake Jesup region and facilitated the delivery of fertilizer and the transporting of vegetables grown on the area's hydric soils. The facilities needed to sustain the former agriculture industry are some of the oldest buildings of its kind within Seminole County. In downtown Oviedo, these include the Nelson and Company and the R. W. Estes Celery Pre-Cooler Plants, both of which are listed on the National Register of Historic Places. According to the Division of Historical Resources (DHR), the Florida Master Site File contains no previously recorded archaeological sites, four resource groups and eight standing structures which are near the trail corridor.

The existing natural communities are located on the edge of the boundary of the trail corridor, and include mesic flatwoods, bayhead, scrub, scrubby flatwoods and blackwater stream. These plant communities are highly disturbed due to railroad construction and now the existence of the trail. Invasive plants along the corridor include air potato (*Dioscorea bulbifera*), skunkvine (*Paederia foetida*), Chinaberry (*Melia azedarach*), cogongrass (*Imperata cylindrica*), Brazilian pepper (*Schinus terebinthifolius*), Camphor tree (*Cinnamomum camphora*), and Swordfern (*Nephrolepis* spp.).

Cross Seminole Trail Land Management Plan 2022



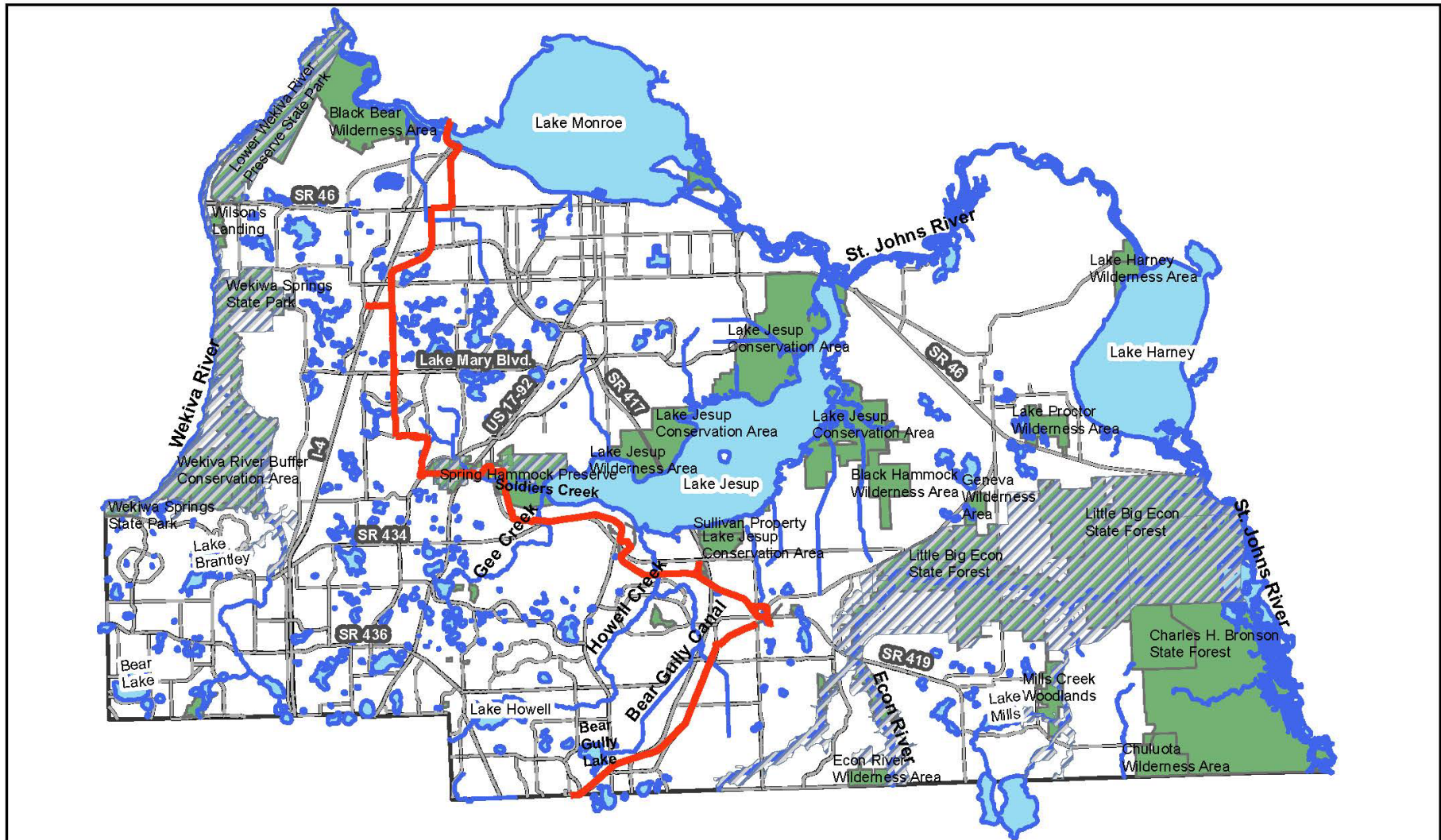



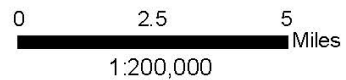


Figure 4: Water Resources Map

Legend

-  Outstanding Florida Water Way - Other/Special Designation
-  Cross Seminole Trail
-  Conservation Lands

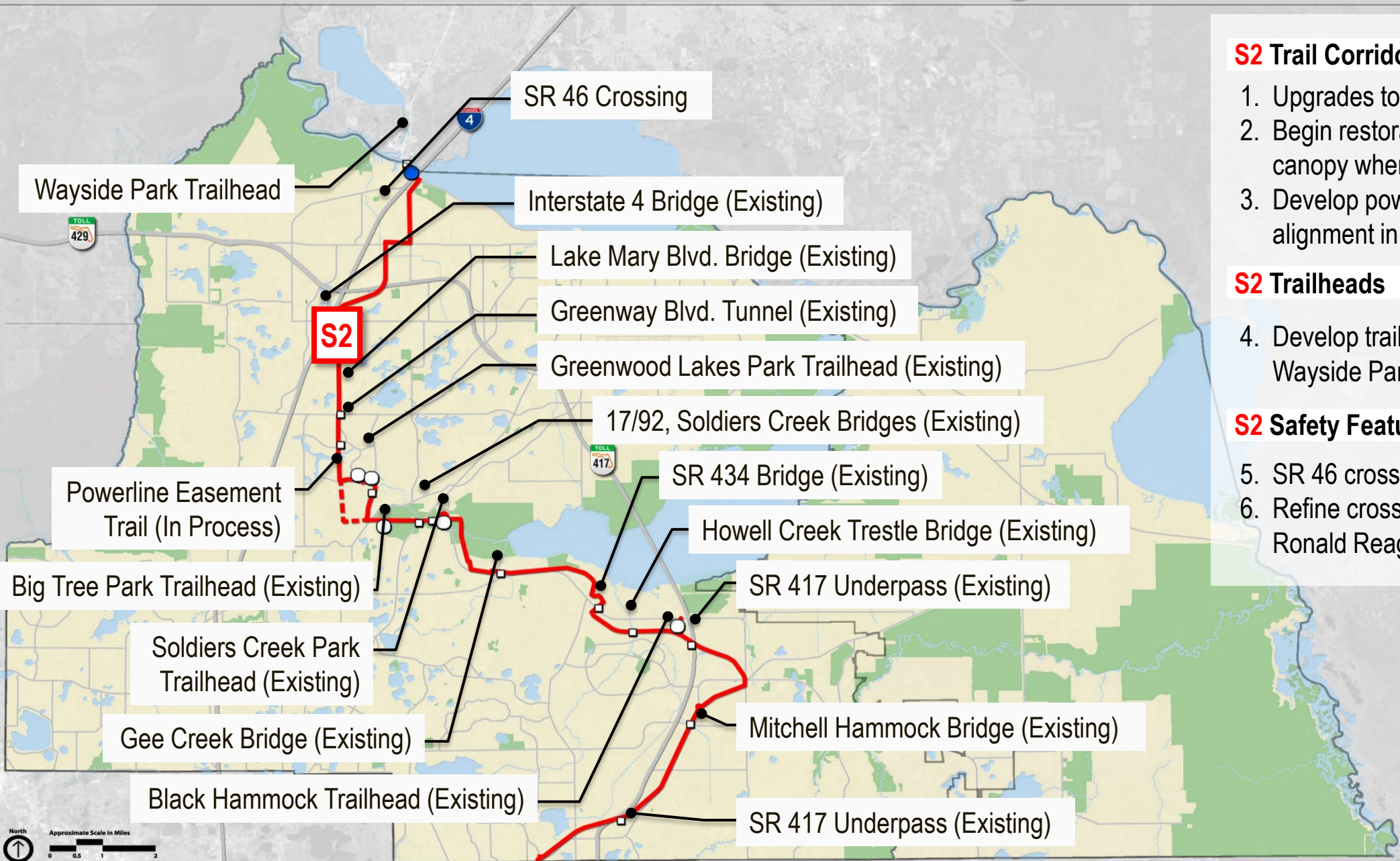


Cross Seminole Trail Land Management Plan 2022

10-Year Management Plan Update:

- Accomplishments
- Update Information in Plan
- **Set New Goals for Next 10 Years**

Cross Seminole Trail Land Management Plan 2022



S2 Trail Corridor

1. Upgrades to north section
2. Begin restoration of urban tree canopy where applicable
3. Develop power easement alignment in Lake Mary

S2 Trailheads

4. Develop trailhead at Wayside Park

S2 Safety Features & Amenities

5. SR 46 crossing enhancements
6. Refine crossing at Ronald Reagan

A large, dark, muddy paw print is the central focus of the image, set against a background of forest floor debris like leaves and twigs. The print shows distinct claw marks and a central pad. The surrounding ground is covered in a layer of brown leaves and thin, dry twigs, suggesting a natural, outdoor setting. The lighting is somewhat dim, highlighting the texture of the mud and the surrounding organic matter.

Questions?



Greenways and Natural Lands Update

PPAC Meeting – July 20, 2022





PW Street Sweeping Schedule:

- Arterial Roads – 4 times per year (58 roads)
- Subdivisions – 2 times per year
- 5 Points – 2 times per year



**Seminole County Public Works
Multi-Use Trail Project Status
July 2022**

Interstate 4 Overpass Cross Seminole Trail Connector Remediation

Limits: Bridge segment

Status: Remediation work complete.

Lake Monroe Loop - Celery / Mellonville Trail

Limits: Sanford Riverwalk to SR 415

Status: Design complete. ROW acquisition in process.

EE Williamson Rd Trail Connector

Limits: I-4 Bridge to CR 427/Ronald Reagan Blvd

Status: Construction underway.

Orange Blvd/CR 431 Safety Improvements (includes Ped/Bike enhancements)

Limits: SR 46 to Monroe Rd

Status: Design and ROW acquisition in process.

Cross Seminole Trail Connector Ramps at US 17-92

Limits: CST at US 17-92

Status: Coordination with FDOT underway.

North Section of the Central Seminole Trail (FKA Power Corridor Trail Study)

Limits: SR 434 to Cross Seminole Trail

Status: Feasibility study complete, move to design next.

Seminole Wekiva Trail Tunnels at SR 434 and SR 436

Limits: SR 434 at Orange Blvd. SR 436 at Laurel St.

Status: Design RFP issued May 2022.

Three proposals received and undergoing staff review.

Tentative Schedule: 7/28/2022 – Staff Evaluation Meeting

8/11/2022 – Presentations

9/13/2022 – Board Meeting

SR 434 Improvements to include Roundabouts and Bike/Ped/Trail improvements

Limits: SR 417 to Franklin St.

Status: At 60% design plans.



Parks and Recreation Update

PPAC Meeting – July 20, 2022





BCC Agenda Item(s): June 28, 2022

- Proclamation designating July as Parks and Recreation Month

PPAC Meeting – July 20, 2022





Thank You!



PW Street Sweeping Schedule:

- Arterial Roads – 4 times per year (58 roads)
- Subdivisions – 2 times per year
- 5 Points – 2 times per year